

WAAS CH 86736 W14A	APP CRS 142°	Rwy ldg TDZE Apt Elev	9501 130 130
----------------------------------------	------------------------	-----------------------------	-----------------------------------------

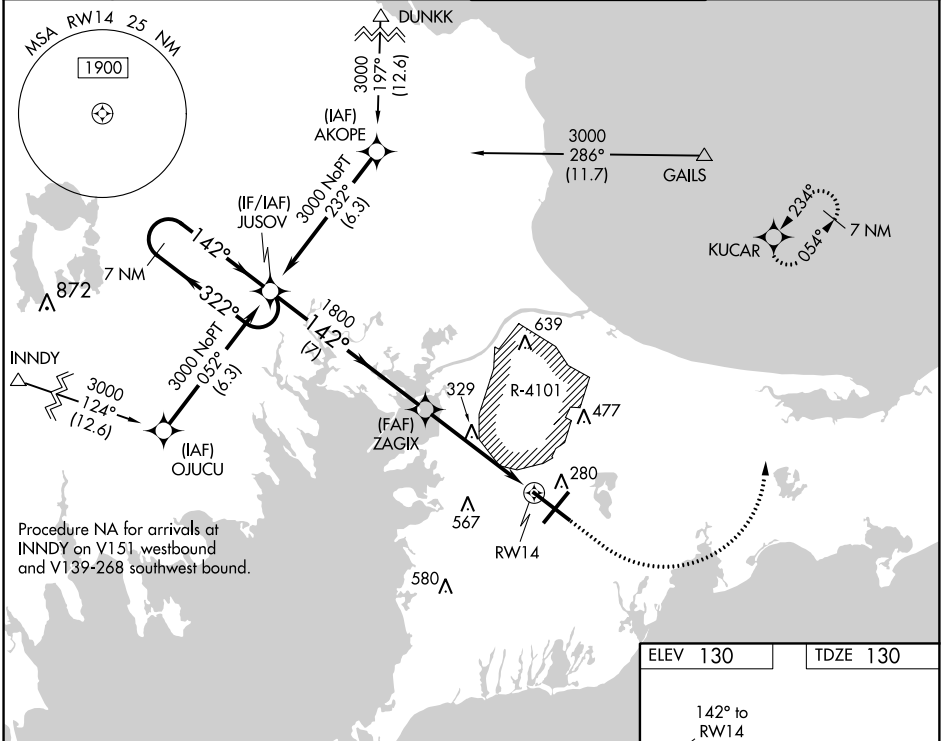
RNAV (GPS) RWY 14

CAPE COD COAST GUARD AIR STATION (FMH)

A For uncompensated Baro-VNAV systems, LNAV/VNAV NA below -15°C (5°F) or above 54°C (130°F). DME/DME RNP-0.3 NA. Circling NA NE of Rwy 14 and NW of Rwy 23. Helicopter visibility reduction below 3/4 SM NA.

MISSED APPROACH: Climb to 600 then climbing left turn to 3000 direct KUCAR and hold.

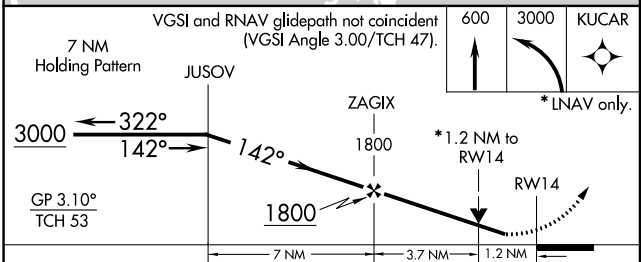
ATIS 120.475 236.825	BOSTON APP CON ★ 118.2 284.6	COAST GUARD TOWER 128.425 291.1	GND CON 124.15 275.8
--------------------------------	----------------------------------------	-------------------------------------------	--------------------------------



Procedure NA for arrivals at INNDY on V151 westbound and V139-268 southwest bound.

NE-1, 10 OCT 2019 to 07 NOV 2019

NE-1, 10 OCT 2019 to 07 NOV 2019



ELEV 130	TDZE 130
----------	----------

REIL Rwy 5 and 14
HIRL Rwy 5-23 and 14-32

CATEGORY	A	B	C	D
IPV DA		330-3/4	200 (200-3/4)	
LNAV/VNAV DA		563-13/8	433 (500-13/8)	
LNAV MDA	580-1	450 (500-1)	580-13/8	450 (500-13/8)
CIRCLING	580-1 450 (500-1)	640-1 510 (600-1)	900-2 1/4 770 (800-2 1/4)	900-2 1/2 770 (800-2 1/2)