

LOC/DME I-RMN	APP CRS	Rwy Idg	<b>5000</b>
<b>108.75</b>	<b>329°</b>	TDZE	<b>196</b>
Chan <b>24 (Y)</b>		Apt Elev	<b>212</b>

# ILS or LOC RWY 33

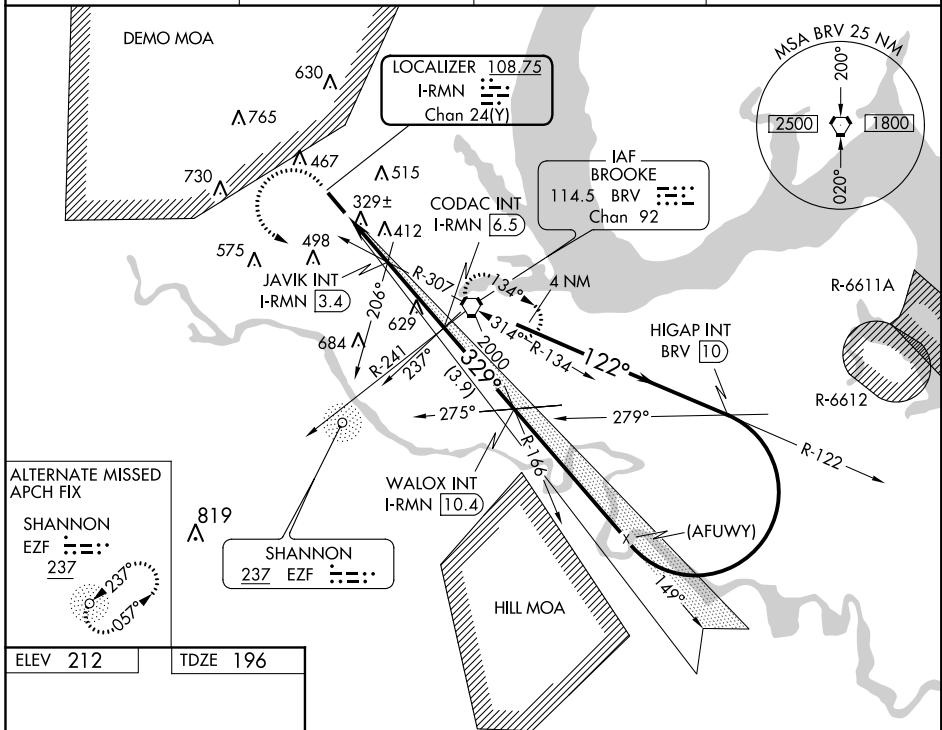
STAFFORD RGNL (RMN)

**▽** If local altimeter setting not received, use Shannon, Fredericksburg, VA altimeter setting and increase all DH/MDAs 40 feet.  
**△NA** Inoperative table does not apply to S-ILS 33 and to S-LOC Cats B and C. DME or ADF required.

MALS

**MISSED APPROACH:** Climb to 600 then climbing left turn to 2000 direct BRV VORTAC and hold.

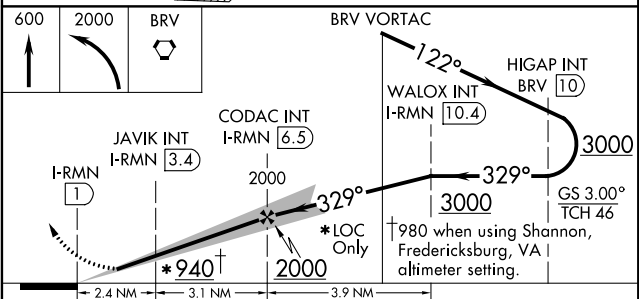
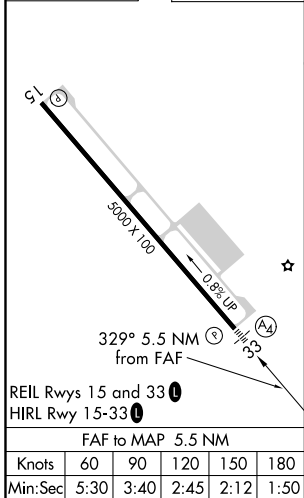
AWOS-3 <b>126.325</b>	POTOMAC APP CON <b>128.525 306.925</b>	GCO <b>135.075</b>	UNICOM <b>122.725 (CTAF) 0</b>
--------------------------	---	-----------------------	-----------------------------------



**ALTERNATE MISSED APCH FIX**

SHANNON  
EZF 237

ELEV 212	TDZE 196
----------	----------



CATEGORY	A	B	C	D
S-ILS 33	396- <sup>3</sup> / <sub>4</sub> 200 (200- <sup>3</sup> / <sub>4</sub> )			
S-LOC 33	580- <sup>3</sup> / <sub>4</sub> 384 (400- <sup>3</sup> / <sub>4</sub> )		580-1 <sup>1</sup> / <sub>4</sub> 384 (400-1 <sup>1</sup> / <sub>4</sub> )	
CIRCLING	720-1 508 (600-1)	740-1 528 (600-1)	840-1 <sup>3</sup> / <sub>4</sub> 628 (700-1 <sup>3</sup> / <sub>4</sub> )	860-2 648 (700-2)

NE-3, 10 OCT 2019 to 07 NOV 2019

NE-3, 10 OCT 2019 to 07 NOV 2019