

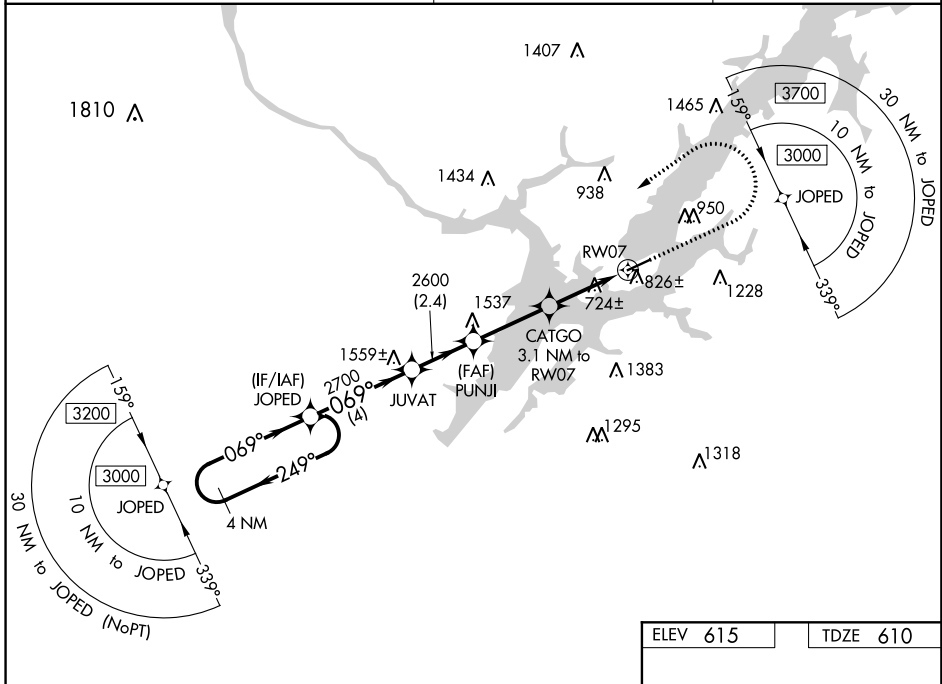
WAAS CH 90340 W07A	APP CRS 069°	Rwy Idg TDZE Apt Elev	5005 610 615
--	------------------------	-----------------------------	---

RNAV (GPS) RWY 7

GUNTERVILLE MUNI-JOE STARNES FIELD (8A1)

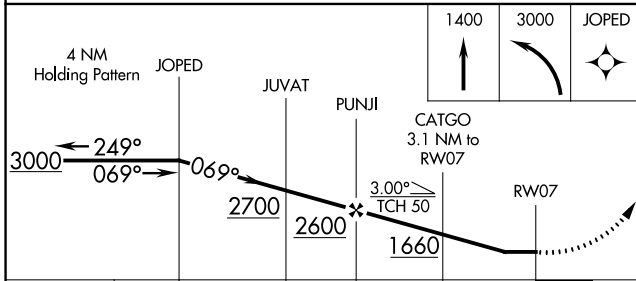
RNP APCH.	<p>⚠ Circling NA to Rwy 6 and 24. Rwy 7 helicopter visibility reduction below 1 SM NA. Use Scottsboro altimeter setting. Straight-in Rwy 7 NA at night, Circling Rwy 7 NA at night.</p>	<p>MISSED APPROACH: Climb to 1400 then climbing left turn to 3000 direct JOPED and hold.</p>
-----------	---	--

4A6 AWOS-3PT 120.125	HUNTSVILLE APP CON ★ 125.6 354.1	UNICOM 122.8 (CTAF) 0
--------------------------------	--	--



SE-4, 10 OCT 2019 to 07 NOV 2019

SE-4, 10 OCT 2019 to 07 NOV 2019



ELEV 615	TDZE 610
----------	----------

REIL Rwy 7 and 25 **0**
MRL Rwy 7-25 **0**

CATEGORY	A	B	C	D
LP MDA	1040-1	430 (500-1)	1040-1¼	430 (500-1¼)
LNAV MDA	1140-1	530 (600-1)	1140-1½	530 (600-1½)
C CIRCLING	1320-1 705 (800-1)	1380-1 765 (800-1)	1620-3	1005 (1100-3)

RNAV (GPS) RWY 7