

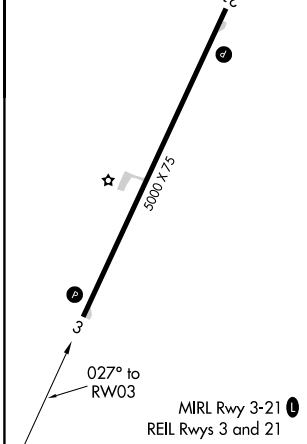
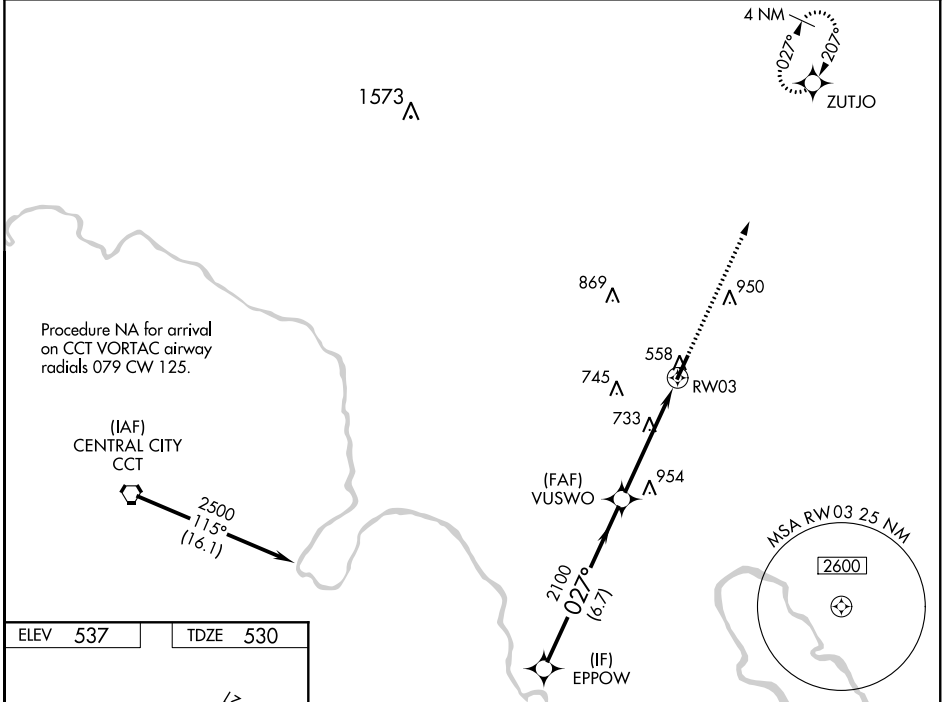
WAAS CH 45926 W03A	APP CRS 027°	Rwy Idg TDZE Apt Elev	5000 530 537
--	------------------------	-----------------------------	---

RNAV (GPS) RWY 3

OHIO COUNTY (JQD)

RNP APCH.	For uncompensated Baro-VNAV systems, LNAV/VNAV NA below -16°C or above 54°C. Baro-VNAV and VDP NA when using Owensboro altimeter setting. When local altimeter setting not received, use Owensboro altimeter setting: increase all DA 71 feet; increase all MDA 80 feet and LNAV Cat C visibility 3/8 SM and Circling Cat C visibility 1/4 SM.	MISSED APPROACH: Climb to 2500 direct ZUTJO and hold.
-----------	--	--

AWOS-3PT 132.1	EVANSVILLE APP CON ★ 124.025 290.9	UNICOM 122.8 (CTAF) 0
--------------------------	--	---------------------------------



EPPOW	2500	2100	2100	2500	ZUTJO
	GP 3.00° TCH 40	027°	2100	*1.5 NM to RWY 3	*LNAV only.
	6.7 NM	3.3 NM	1.5 NM		
CATEGORY	A	B	C	D	
LPV DA		780-1 250 (300-1)		NA	
LNAV/VNAV DA		780-1 250 (300-1)		NA	
LNAV MDA	1040-1	510 (600-1)	1040-1 3/8 510 (600-1 3/8)	NA	
C CIRCLING	1040-1 503 (600-1)	1100-1 563 (600-1)	1300-2 1/4 763 (800-2 1/4)	NA	

SE-1, 10 OCT 2019 to 07 NOV 2019

SE-1, 10 OCT 2019 to 07 NOV 2019