

WAAS CH 90526 W21A	APP CRS 207°	Rwy Idg TDZE Apt Elev	5000 537 537
----------------------------------------	------------------------	-----------------------------	-----------------------------------------

RNAV (GPS) RWY 21

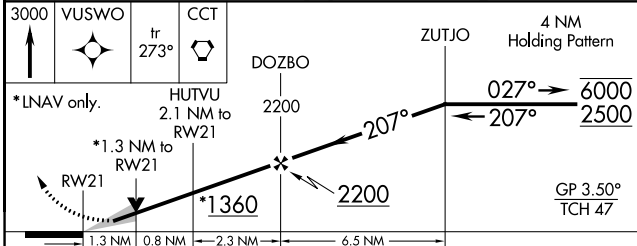
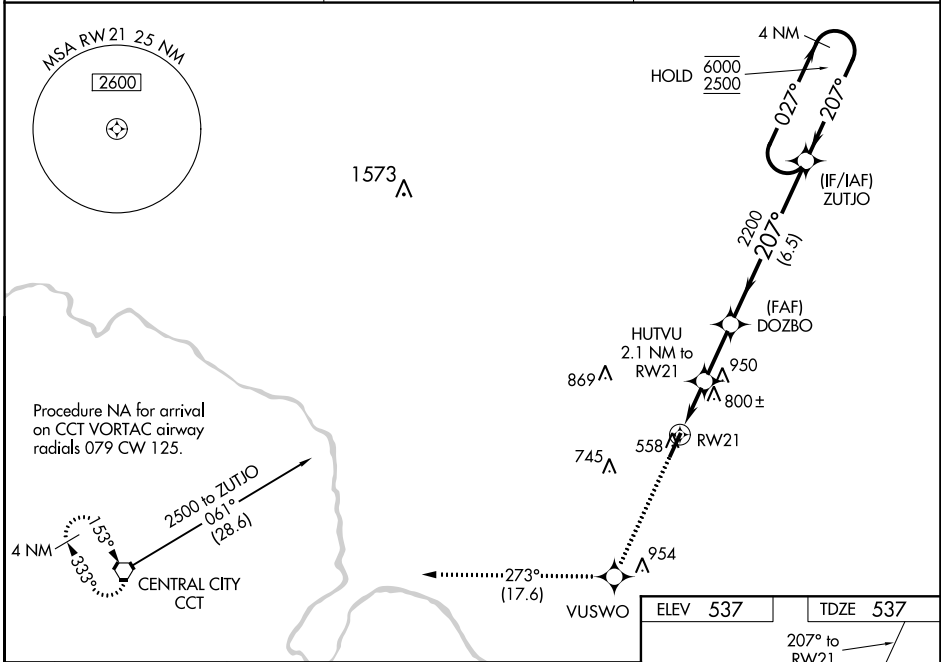
OHIO COUNTY (JQD)

RNP APCH.

▼ For uncompensated Baro-VNAV systems, LNAV/VNAV NA below -16°C or above 54°C. Baro-VNAV and VDP NA when using Owensboro altimeter setting. When local altimeter setting not received, use Owensboro altimeter setting: increase all DA 71 feet and LNAV/VNAV all Cats visibility ¼ SM; increase all MDA 80 feet and LNAV Cat C and Circling Cat C visibility ¼ SM.

MISSED APPROACH: Climb to 3000 direct VUSWO and on track 273° to CCT VORTAC and hold.

AWOS-3PT 132.1	EVANSVILLE APP CON ★ 124.025 290.9	UNICOM 122.8 (CTAF) 0
--------------------------	----------------------------------------------	----------------------------------------



ELEV 537	TDZE 537
207° to RWY 21	
3000 MSL	
MIRL Rwy 3-21 0	
REIL Rws 3 and 21	

CATEGORY	A	B	C	D
LPV DA	787-1	250 (300-1)	807-1 270 (300-1)	NA
LNAV/VNAV DA	1011-1 3/8		474 (500-1 3/8)	NA
LNAV MDA	1060-1	523 (600-1)	1060-1 1/2 523 (600-1 1/2)	NA
C CIRCLING	1060-1 523 (600-1)	1100-1 563 (600-1)	1300-2 1/4 763 (800-2 1/4)	NA

SE-1, 10 OCT 2019 to 07 NOV 2019

SE-1, 10 OCT 2019 to 07 NOV 2019