

VORTAC BGD 108.6 Chan 23	APP CRS 167°	Rwy Idg TDZE Apt Elev	N/A N/A 3454
--	------------------------	-----------------------------	---

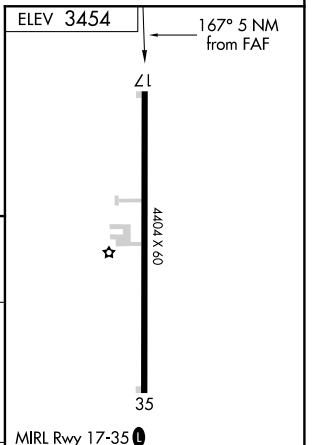
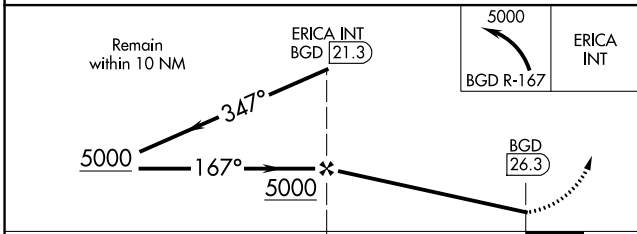
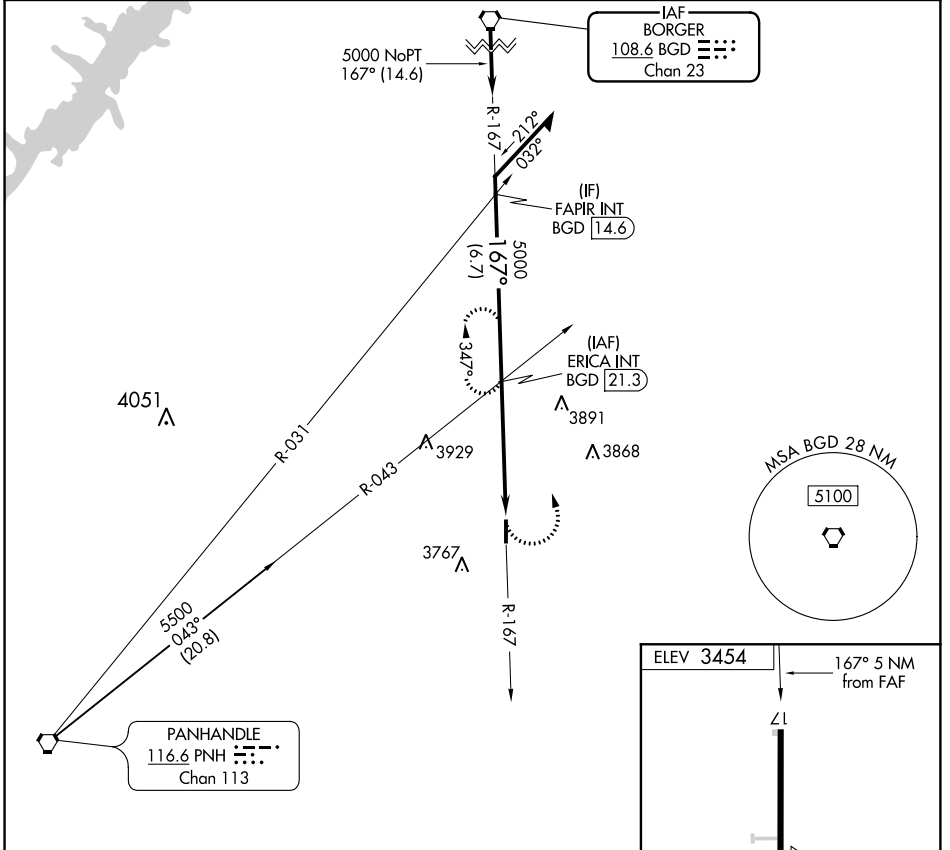
VOR-A

PANHANDLE-CARSON COUNTY (T45)

NA Use Amarillo Intl altimeter setting; when not received, use Hutchinson County altimeter setting and increase all MDA 40 feet; increase Circling Cat C visibility to 2½.

MISSED APPROACH: Climbing left turn to 5000 on BGD R-167 to ERICA/21.3 DME and hold.

AMARILLO APP CON★ 119.5 307.0	UNICOM 122.7 (CTAF)	123.5 0
---	-------------------------------	-----------------------



CATEGORY	CIRCLING				FAF to MAP 5 NM					
	A	B	C	D	Knots	60	90	120	150	180
CIRCLING	4220-1 766 (800-1)	4220-1¼ 766 (800-1¼)	4220-2¼ 766 (800-2¼)	NA	Min:Sec	5:00	3:20	2:30	2:00	1:40

VOR-A

SC-2, 10 OCT 2019 to 07 NOV 2019

SC-2, 10 OCT 2019 to 07 NOV 2019