

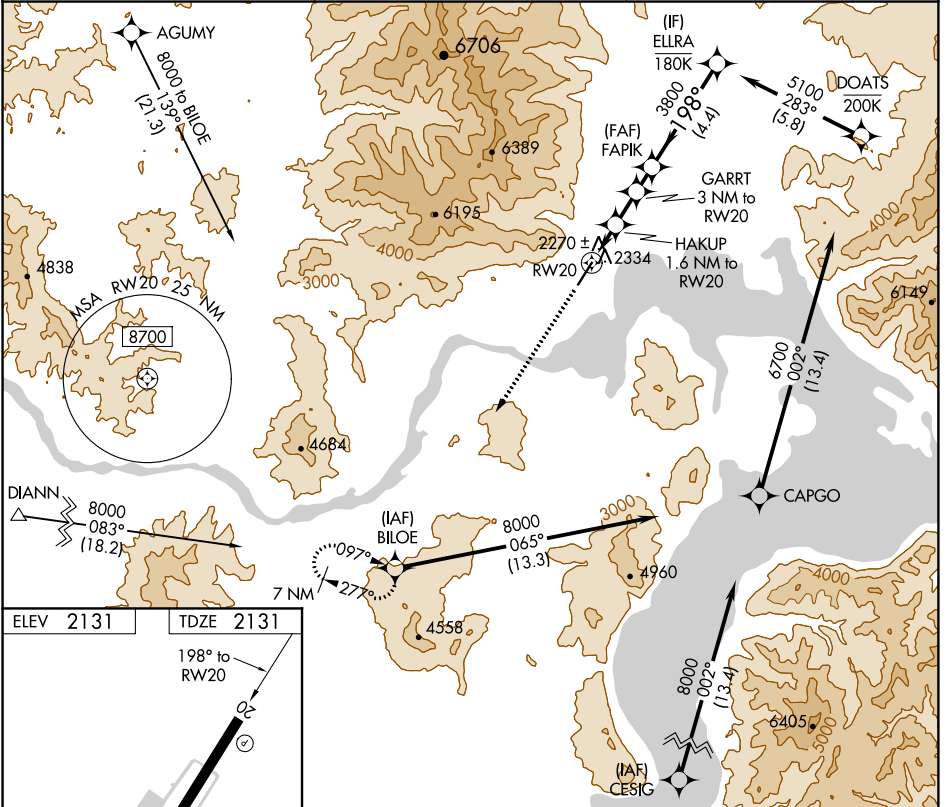
WAAS CH 99542 W20A	APP CRS 198°	Rwy Idg TDZE Apt Elev	5501 2131 2131
--	------------------------	-----------------------------	---

RNAV (GPS) Z RWY 20

SANDPOINT (SZT)

RNP APCH.	MISSED APPROACH: Climb to 6600 direct BILOE and hold, continue climb-in-hold to 6600. * Missed approach requires minimum climb of 318 feet per NM to 4500; if unable to meet climb gradient, see RNAV (GPS) Y RWY 20.
<p>Rwy 20 helicopter visibility reduction below 3/4 SM NA. When local climeter not received, procedure NA.</p>	

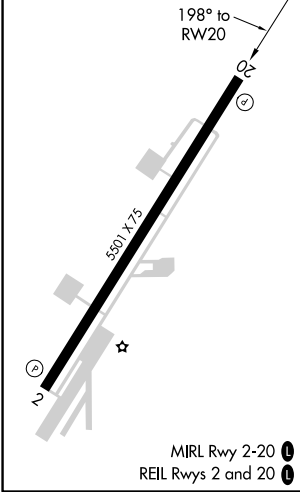
AWOS-3 135.425	SEATTLE CENTER 123.95 290.55	UNICOM 122.7 (CTAF)
--------------------------	--	-------------------------------



NW-1, 10 OCT 2019 to 07 NOV 2019

NW-1, 10 OCT 2019 to 07 NOV 2019

ELEV 2131	TDZE 2131
-----------	-----------



6600	BILOE	VGSi and descent angles not coincident (VGSi Angle 3.75/TCH 50).			ELLRA
		HAKUP 1.6 NM to RW20	GARRT 3 NM to RW20	FAPIK	5100
		0.9 NM to RW20	3380	3800	198°
		0.9 NM	0.7 NM	1 NM	4.4 NM
			3.77° TCH 55		
CATEGORY	A	B	C	D	
LP MDA*	2520-1	389 (400-1)	2520-1 1/8 389 (400-1 1/8)	NA	