

APP CRS 346°	Rwy Idg 7025
	TDZE 6221
	Apt Elev 6221

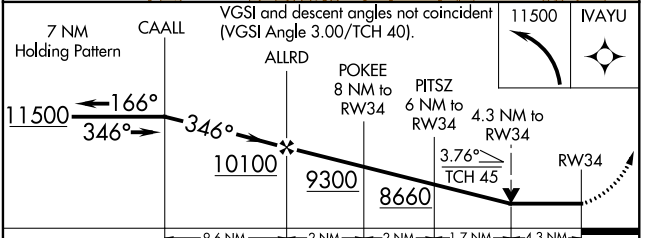
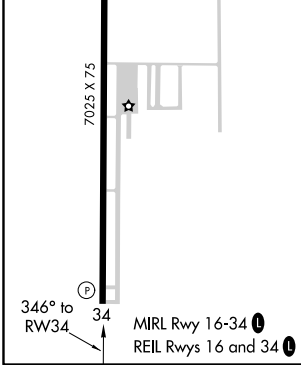
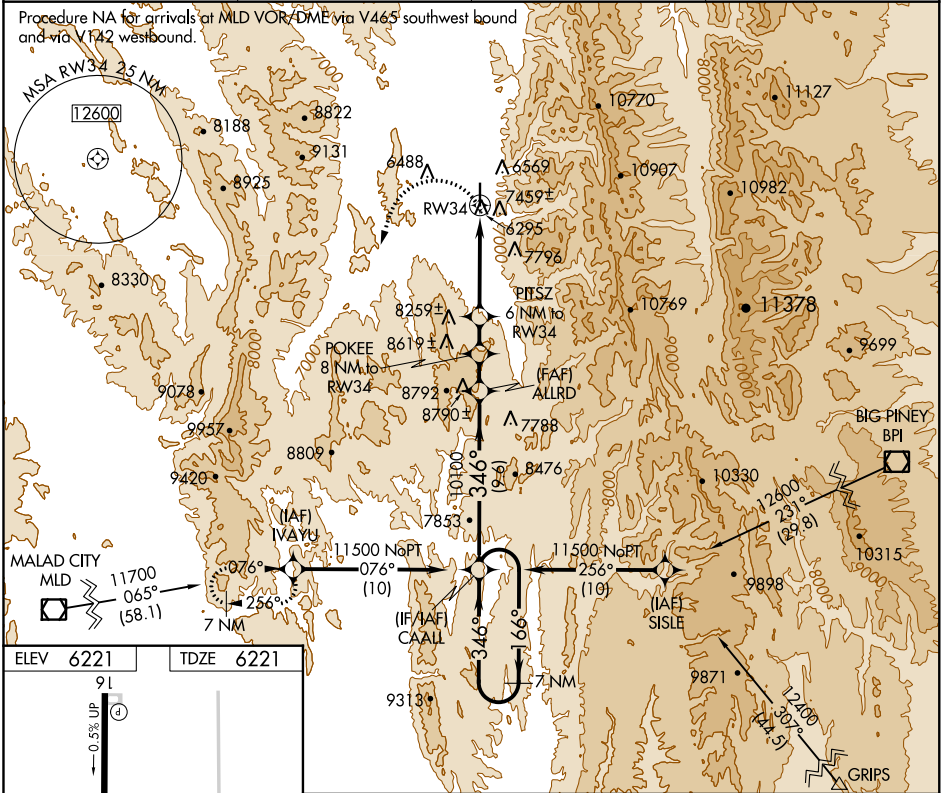
RNAV (GPS) RWY 34

AFTON MUNI (AFO)

NA DME/DME RNP-0.3 NA. Circling NA east of Rwy 16-34. Helicopter visibility reduction below 3/4 SM NA. If local altimeter setting not received, procedure NA.

MISSED APPROACH: Climbing left turn to 11500 direct IVAYU and hold.

AWOS-3P 119.025	SALT LAKE CENTER 128.35 381.6	CASPER RADIO 122.3	UNICOM 122.8 (CTAF) 0
---------------------------	---	------------------------------	---------------------------------



CATEGORY	A	B	C	D
LNAV MDA	7620-1 1/4 1399 (1400-1 1/4)	7620-1 1/2 1399 (1400-1 1/2)	7620-3 1399 (1400-3)	NA
CIRCLING	7620-1 1/4 1399 (1400-1 1/4)	7620-1 1/2 1399 (1400-1 1/2)	7620-3 1399 (1400-3)	NA

NW-1, 10 OCT 2019 to 07 NOV 2019

NW-1, 10 OCT 2019 to 07 NOV 2019