

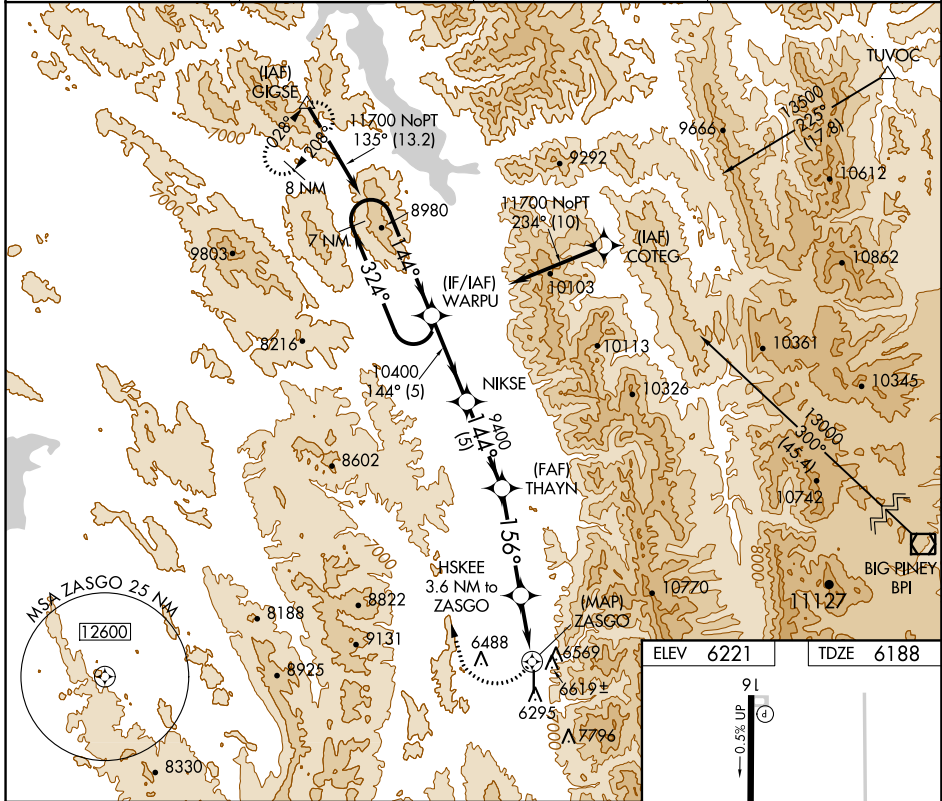
APP CRS 156°	Rwy Idg 7025
	TDZE 6188
	Apt Elev 6221

RNAV (GPS) RWY 16

AFTON MUNI (AFO)

RNP APCH.	If local altimeter setting not received, procedure NA. Circling NA east of Rwy 16-34. Rwy 16 helicopter visibility reduction below 3/4 SM NA.	MISSED APPROACH: Climbing right turn to 11700 direct GIGSE and hold. When authorized by ATC, climb-in-hold to 15000.
-----------	--	--

AWOS-3P 119.025	SALT LAKE CENTER 128.35 381.6	CASPER RADIO 122.3	UNICOM 122.8 (CTAF) 0
---------------------------	---	------------------------------	---------------------------------

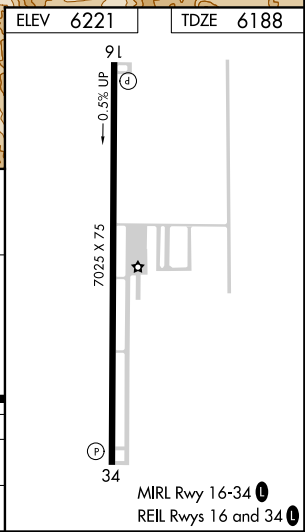


7 NM Holding Pattern

WARPU VGSI and descent angles not coincident (VGSI Angle 3.00/TCH 40).

11700	10400	9400	7520	ZASGO
←324°	→144°	→144°	→2.99°	→1.56°
			TCH 47	
			3.6 NM to ZASGO	2.3 NM to ZASGO
				0.5 NM

CATEGORY	A	B	C	D
LNVA MDA	7140-1¼ 952 (1000-1¼)	7140-1½ 952 (1000-1½)	7140-3 952 (1000-3)	NA
CIRCLING	7140-1¼ 919 (1000-1¼)	7140-1½ 919 (1000-1½)	7140-3 919 (1000-3)	NA



NW-1, 10 OCT 2019 to 07 NOV 2019

NW-1, 10 OCT 2019 to 07 NOV 2019