

WAAS CH <b>56242</b> W13A	APP CRS <b>143°</b>	Rwy Idg TDZE Apt Elev	<b>4001</b> <b>1115</b> <b>1130</b>
---------------------------------	------------------------	-----------------------------	---

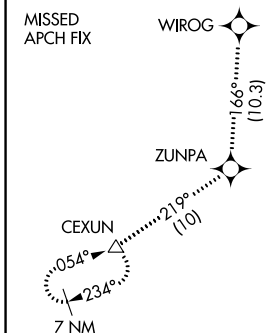
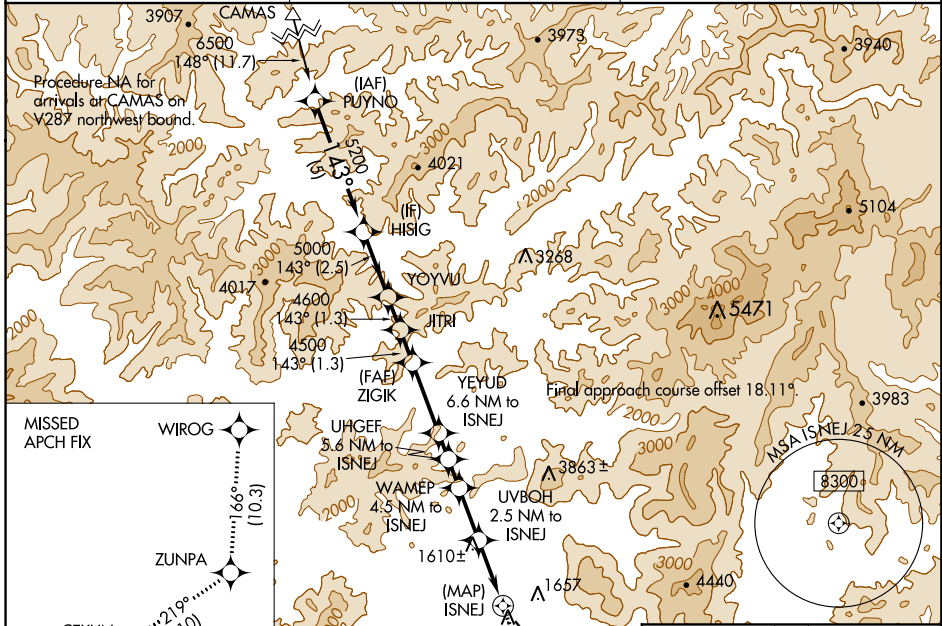
# RNAV (GPS) RWY 13

GRANTS PASS (3S8)

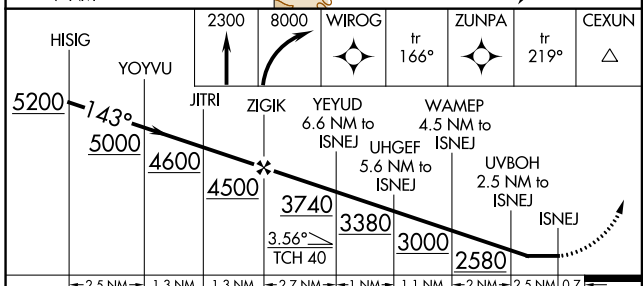
**⚠** Circling NA northeast of Rwy 13-31. Rwy 13 helicopter visibility reduction below 1 SM NA. DME/DME RNP-0.3 NA. Straight-in Rwy 13 NA at night, Circling Rwy 13 NA at night.

**⚠** MISSED APPROACH: Climb to 2300 then climbing right turn to 8000 direct WIROG and on track 166° to ZUNPA and on track 219° to CEXUN and hold.

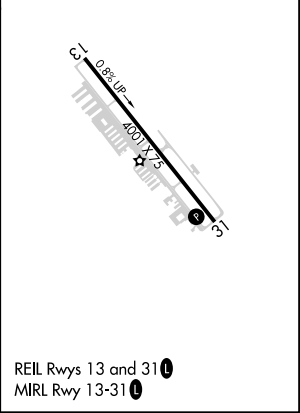
AWOS-3PT <b>120.0</b>	CASCADE APP CON ★ <b>124.3 379.9</b>	UNICOM <b>122.8 (CTAF) 0</b>
--------------------------	---	---------------------------------



ELEV 1130	TDZE 1115
-----------	-----------



CATEGORY	A	B	C	D
LP MDA	1680-1	565 (600-1)	1680-1¾	565 (600-1¾)
<b>C</b> CIRCLING	1840-1 710 (800-1)	2020-1¼ 890 (900-1¼)	2180-3 1050 (1100-3)	2340-3 1210 (1300-3)



NW-1, 10 OCT 2019 to 07 NOV 2019

NW-1, 10 OCT 2019 to 07 NOV 2019