

APP CRS	Rwy Idg	5101
076°	TDZE	3305
	Apt Elev	3313

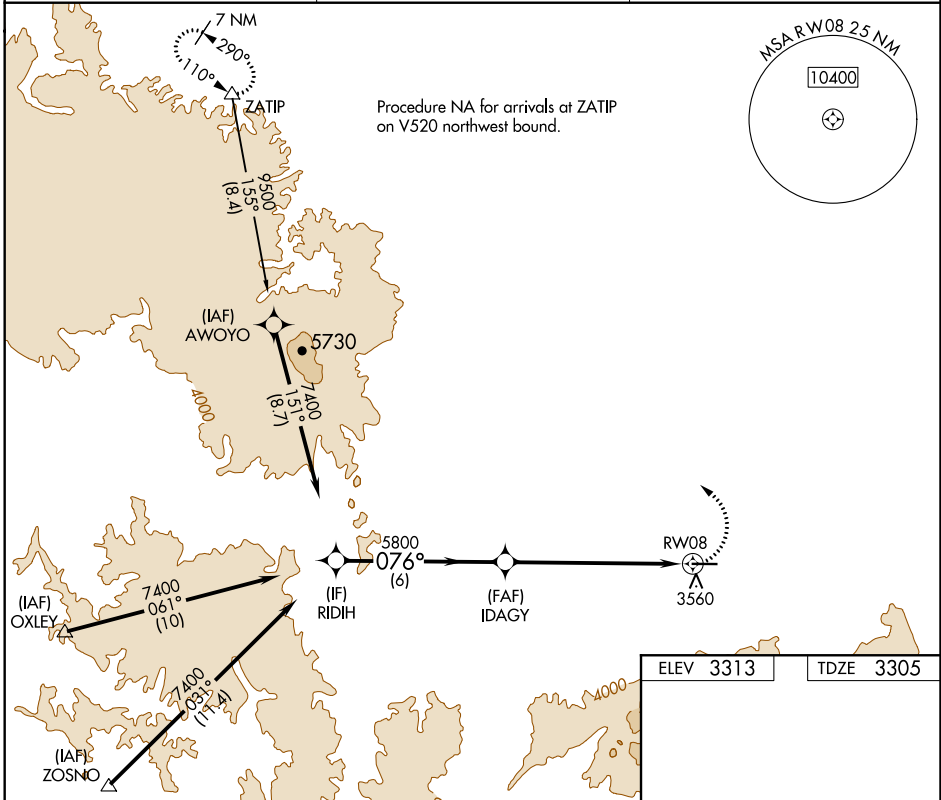
RNAV (GPS) RWY 8

IDAHO COUNTY (GIC)

⚠ Circling NA south of Rwy 8-26. Rwy 8 Helicopter visibility reduction below ¾ SM NA. DME/DME RNP-0.3 NA.

⚠ MISSED APPROACH: Climbing left turn to 7300 direct ZATIP and hold.

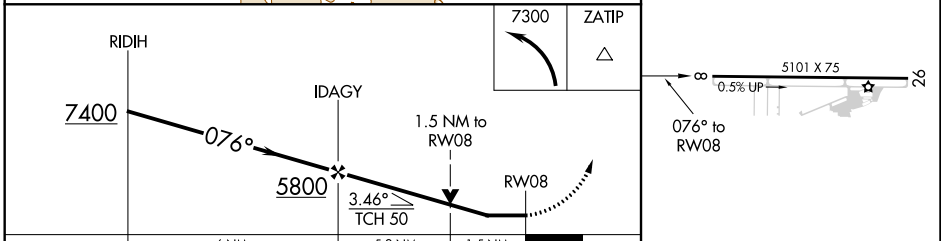
AWOS-3 118.175	SEATTLE CENTER 123.95 290.55	CTAF 122.8 0
--------------------------	--	------------------------



NW-1, 10 OCT 2019 to 07 NOV 2019

NW-1, 10 OCT 2019 to 07 NOV 2019

ELEV 3313	TDZE 3305
-----------	-----------



CATEGORY	A	B	C	D
LNVA MDA	3900-1	595 (600-1)	3900-1¾	595 (600-1¾)
C CIRCLING	3900-1	587 (600-1)	3900-1¾	3900-2
			587 (600-1¾)	587 (600-2)

MIRL Rwy 8-26
REIL Rwy 8 **0**