

APP CRS 241°	Rwy Idg 5101
	TDZE 3313
	Apt Elev 3313

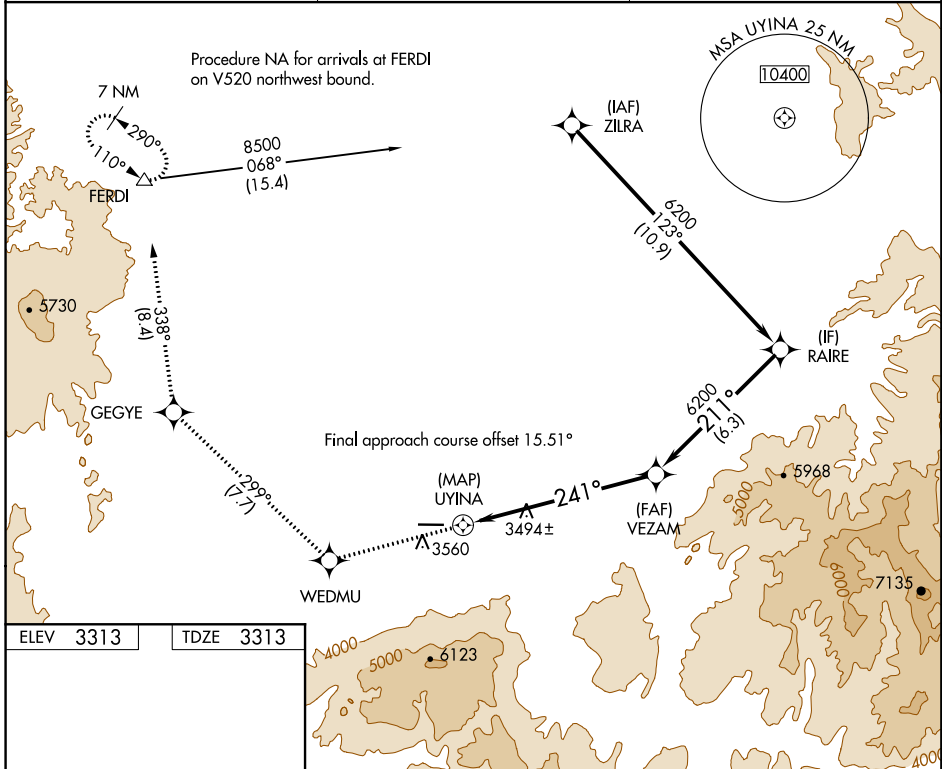
RNAV (GPS) RWY 26

IDAHO COUNTY (GIC)

⚠ Circling NA south of Rwy 8-26.
DME/DME RNP-0.3 NA.

MISSED APPROACH: Climb to 7300 direct WEDMU and on track 299° to GEGYE and on track 338° to FERDI and hold, continue climb-in-hold to 7300.

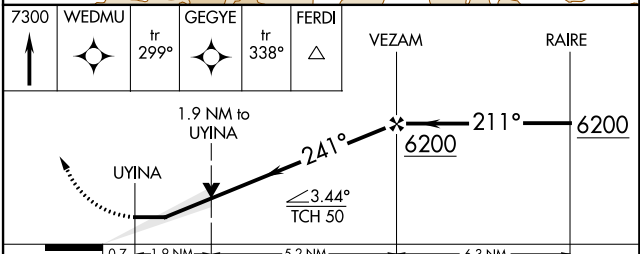
AWOS-3 118.175	SEATTLE CENTER 123.95 290.55	CTAF 122.8
--------------------------	--	----------------------



NW-1, 10 OCT 2019 to 07 NOV 2019

NW-1, 10 OCT 2019 to 07 NOV 2019

ELEV 3313	TDZE 3313
-----------	-----------



CATEGORY	A	B	C	D
LNAV MDA	4060-1 747 (800-1)	4060-1¼ 747 (800-1¼)	4060-2	747 (800-2)
C CIRCLING	4060-1 747 (800-1)	4060-1¼ 747 (800-1¼)	4060-2¼ 747 (800-2¼)	4060-2½ 747 (800-2½)