

WAAS CH 90306 W01A	APP CRS 014°	Rwy Idg TDZE Apt Elev	6279 1049 1071
--	------------------------	-----------------------------	---

RNAV (GPS) RWY 1

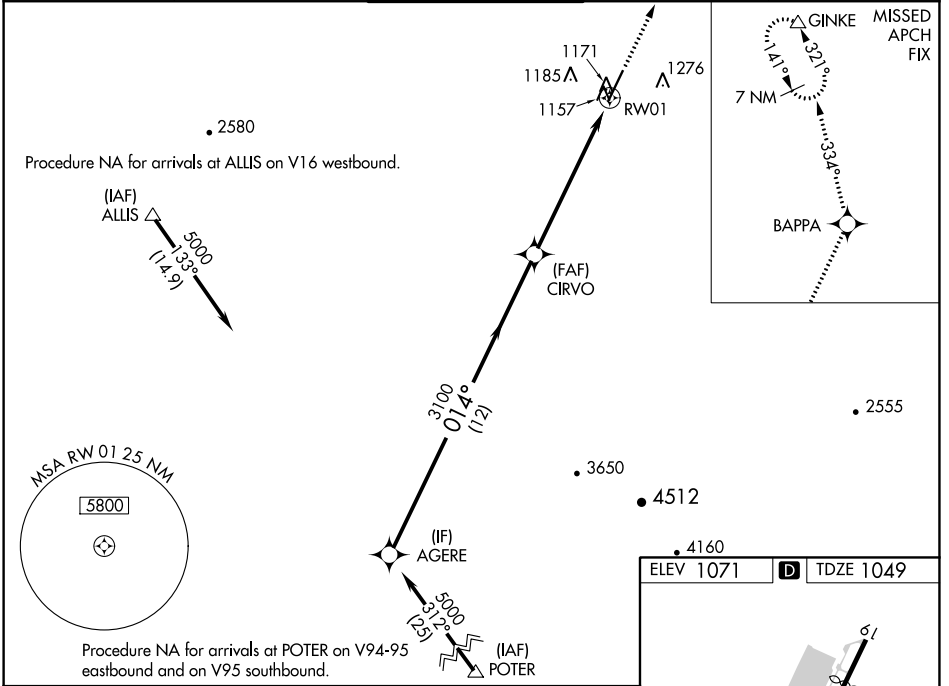
GLENDALE MUNI (GEU)

RNP APCH.

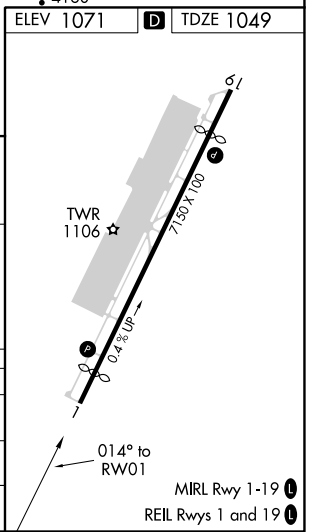
⚠ Baro-VNAV NA when using Phoenix Sky Harbor Intl altimeter setting. For uncompensated Baro-VNAV systems, LNAV/VNAV NA below -17°C or above 47°C. When local altimeter setting not received, use Phoenix Sky Harbor Intl altimeter setting; increase LPV DA to 1438 feet; increase LNAV/VNAV DA to 1517 feet and all visibilities $\frac{1}{4}$ SM; increase all MDA 60 feet and LNAV Cat C and D visibility $\frac{1}{4}$ SM. Night landing: Rwy 1, Cat C and D operational VGSIs required, remain on or above VGSIs glidepath until threshold. Rwy 1 helicopter visibility reduction below $\frac{3}{4}$ SM NA.

MISSED APPROACH: Climb to 10000 direct BAPPA and on 334° track to GINKE and hold, continue climb-in-hold to 10000.

ATIS 119.425	LUKE APP CON * 118.15 363.125	GLENDALE TOWER * 121.0 (CTAF) 0	GND CON 118.0	UNICOM 122.95
------------------------	---	---	-------------------------	-------------------------



Procedure Turn NA	AGERE	CIRVO	10000	BAPPA	GINKE
			↑	✧	334° tr △
GP 3.00° TCH 40	5000	3100			
	014°				
	12 NM	6.2 NM			
CATEGORY	A	B	C	D	
LPV DA		1378-1¼	329 (400-1¼)		
LNAV/VNAV DA		1457-1½	408 (400-1½)		
LNAV MDA	1440-1	391 (400-1)	1440-1⅛ 391 (400-1⅛)	1440-1¼ 391 (400-1¼)	



SW-4, 10 OCT 2019 to 07 NOV 2019

SW-4, 10 OCT 2019 to 07 NOV 2019