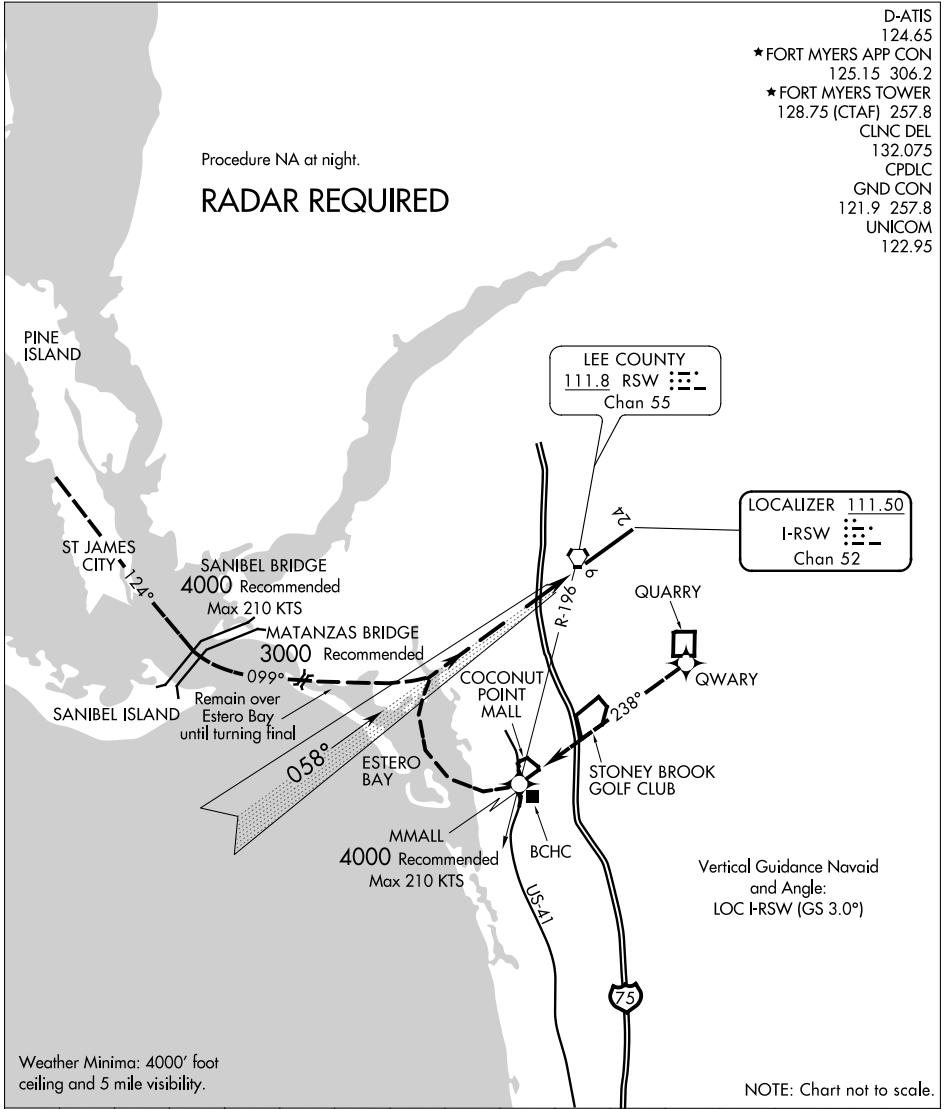


BAY VISUAL RWY 6

- D-ATIS 124.65
- ★ FORT MYERS APP CON 125.15 306.2
- ★ FORT MYERS TOWER 128.75 (CTAF) 257.8
- CLNC DEL 132.075
- CPDLC
- GND CON 121.9 257.8
- UNICOM 122.95

Procedure NA at night.

RADAR REQUIRED



SE-3, 10 OCT 2019 to 07 NOV 2019

SE-3, 10 OCT 2019 to 07 NOV 2019

Weather Minima: 4000' foot ceiling and 5 mile visibility.

Vertical Guidance Navaid and Angle: LOC I-RSW (GS 3.0°)

NOTE: Chart not to scale.

1	2	3	4	5	6	7	8	9	10	11	12	13	14	15	16
---	---	---	---	---	---	---	---	---	----	----	----	----	----	----	----

BAY VISUAL APPROACH RUNWAY 6

From EAST proceed direct to the quarry (over the Rock Quarry Midfield right downwind runway six) then direct and abeam the Coconut Point Mall. Turn base over Estero Bay and remain over the bay until turning final.

From WEST proceed direct to Pine Island then direct to the Sanibel Bridge (heading 124°) then direct to the Matanzas Pass Bridge (heading 99°). Remain over the middle of Estero Bay until turning final.

BAY VISUAL RWY 6

26°32'N-81°45'W

FORT MYERS, FLORIDA
SOUTHWEST FLORIDA INTL (RSW)

Amdt 1 21AUG14