

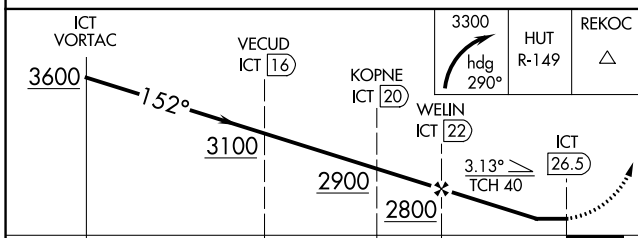
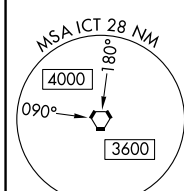
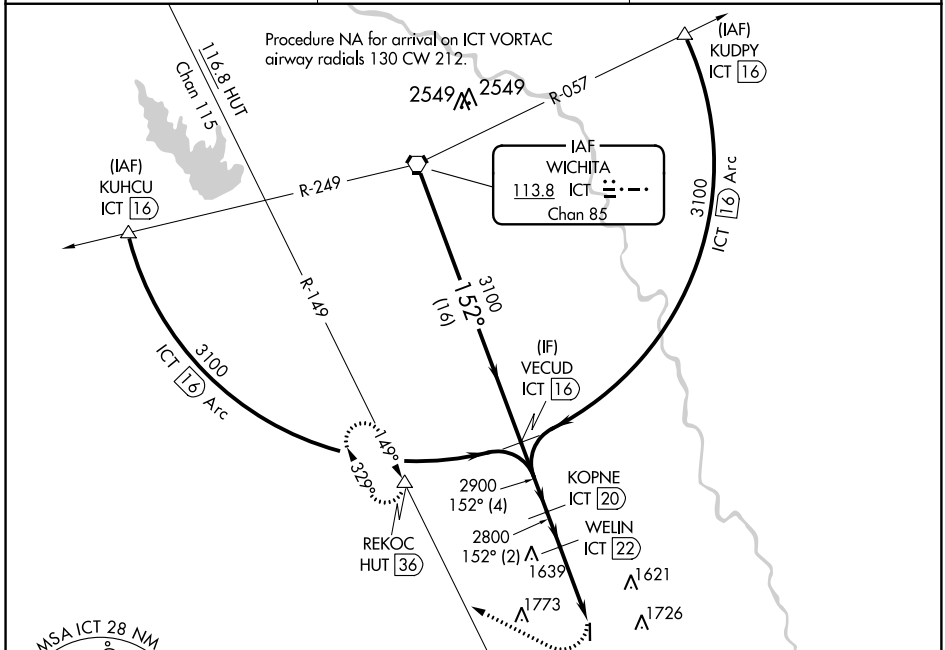
VORTAC ICT <b>113.8</b> Chan <b>85</b>	APP CRS <b>152°</b>	Rwy Idg TDZE Apt Elev <b>5201</b> <b>1277</b> <b>1277</b>
--	------------------------	--

# VOR RWY 18

WELLINGTON MUNI (E/GT)

DME Required.	MISSED APPROACH: Climbing right turn to 3300 on heading 290° and HUT VOR/DME R-149 to REKOC/HUT 36 DME and hold.
---------------	--

AWOS-3 <b>118.875</b>	WICHITA APP CON <b>134.85</b>	UNICOM <b>122.8</b> (CTAF) <b>0</b>
--------------------------	----------------------------------	--



CATEGORY	A	B	C	D
S-18	2100-1 823 (900-1)	2100-1¼ 823 (900-1¼)	2100-2½ 823 (900-2½)	2180-3 903 (1000-3)
<b>C</b> CIRCLING	2100-1¼ 823 (900-1¼)		2100-2½ 823 (900-2½)	2180-3 903 (1000-3)

ELEV 1277	TDZE 1277
-----------	-----------

HIRL Rwy 18-36 **0**  
REIL Rwy 18 and 36 **0**

NC-2, 10 OCT 2019 to 07 NOV 2019

NC-2, 10 OCT 2019 to 07 NOV 2019