

WAAS CH <b>63127</b> <b>W35A</b>	APP CRS <b>354°</b>	Rwy Idg TDZE Apt Elev	<b>3601</b> <b>1487</b> <b>1487</b>
--	------------------------	-----------------------------	---

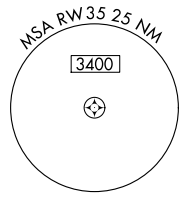
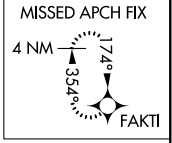
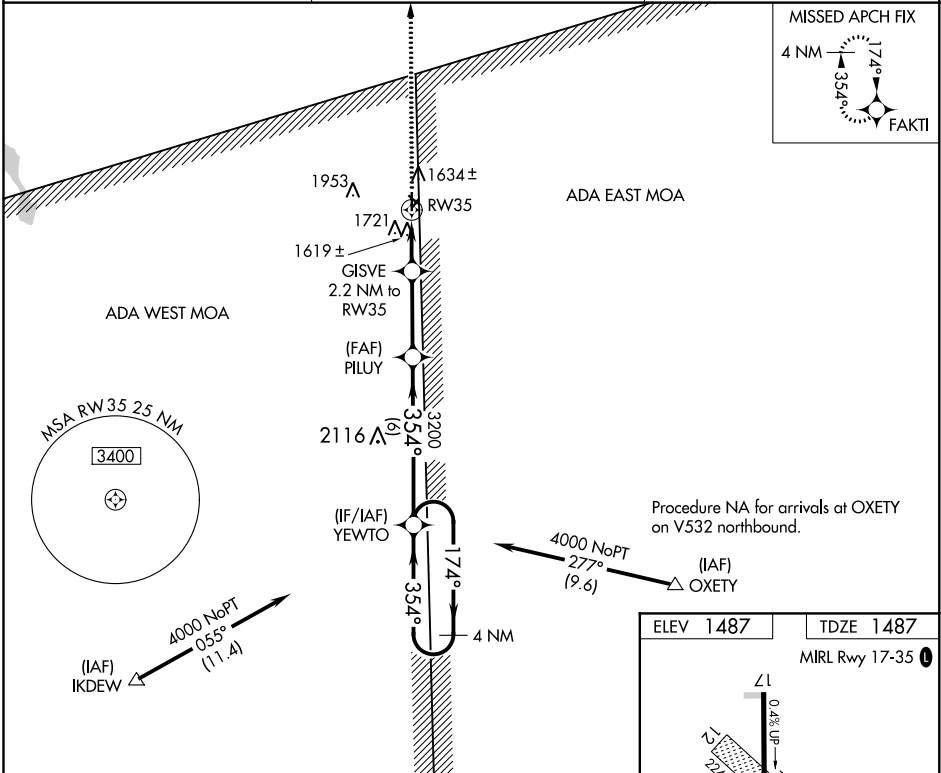
# RNAV (GPS) RWY 35

BLOSSER MUNI (CNK)

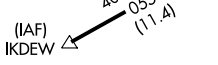
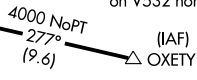
RNP APCH. MISSED APPROACH: Climb to 4000 direct FAKTI and hold.

**⚠** Rwy 35 helicopter visibility reduction below 1 SM NA. When local altimeter setting not received, use Hebron altimeter setting and increase all MDA 100 feet. Procedure NA at night.

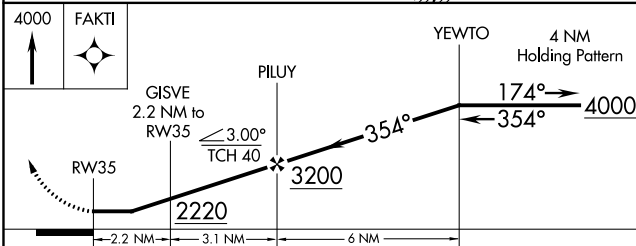
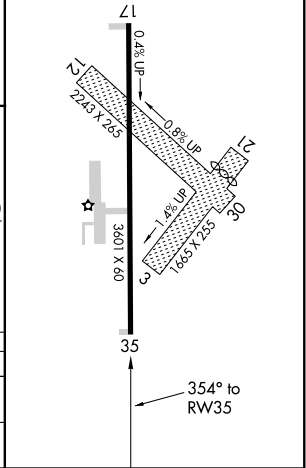
ASOS <b>123.825</b>	KANSAS CITY CENTER <b>134.9 363.2</b>	UNICOM <b>122.8 (CTAF)</b>
------------------------	--	-------------------------------



Procedure NA for arrivals at OXETO on V532 northbound.



ELEV 1487	TDZE 1487
-----------	-----------



CATEGORY	A	B	C	D
LP MDA	1880-1	393 (400-1)		NA
LNAV MDA	2040-1	553 (600-1)		NA

NC-2, 10 OCT 2019 to 07 NOV 2019

NC-2, 10 OCT 2019 to 07 NOV 2019