

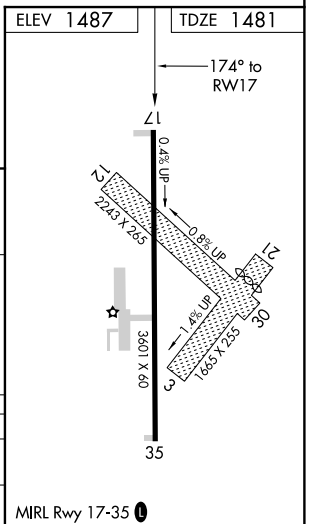
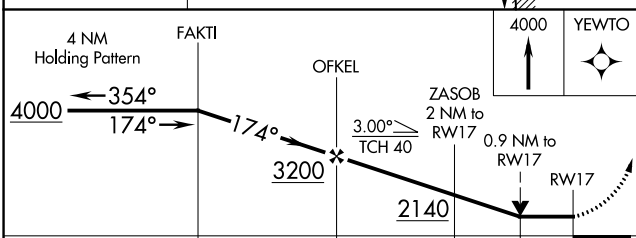
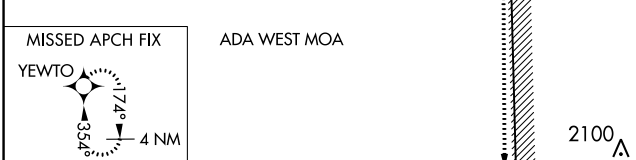
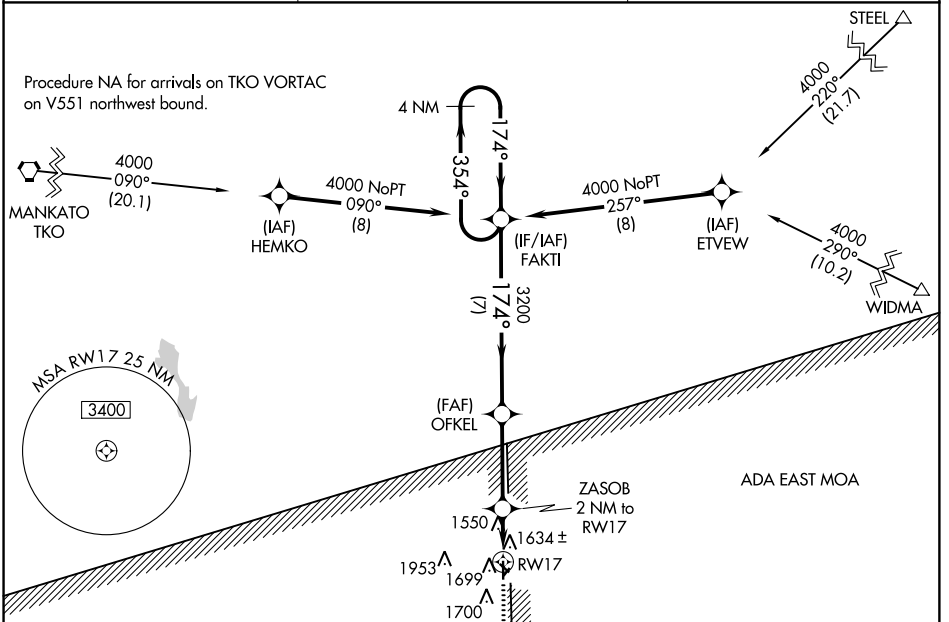
WAAS CH 45827 W17A	APP CRS 174°	Rwy Idg 3601 TDZE 1481 Apt Elev 1487
---------------------------------	------------------------	---

RNAV (GPS) RWY 17

BLOSSER MUNI (CNK)

RNP APCH.	MISSED APPROACH: Climb to 4000 direct YEWTO and hold.
<p>When local alimeter setting not received, use Hebron alimeter setting and increase all MDA 100 feet. VDP NA when using Hebron altimeter setting.</p>	

ASOS 123.825	KANSAS CITY CENTER 134.9 363.2	UNICOM 122.8 (CTAF) 0
------------------------	--	---------------------------------



CATEGORY	A	B	C	D
LP MDA	1800-1	319 (400-1)		NA
LNAV MDA	1960-1	479 (500-1)		NA

NC-2, 10 OCT 2019 to 07 NOV 2019

NC-2, 10 OCT 2019 to 07 NOV 2019