

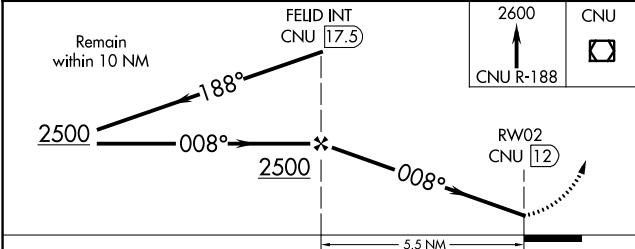
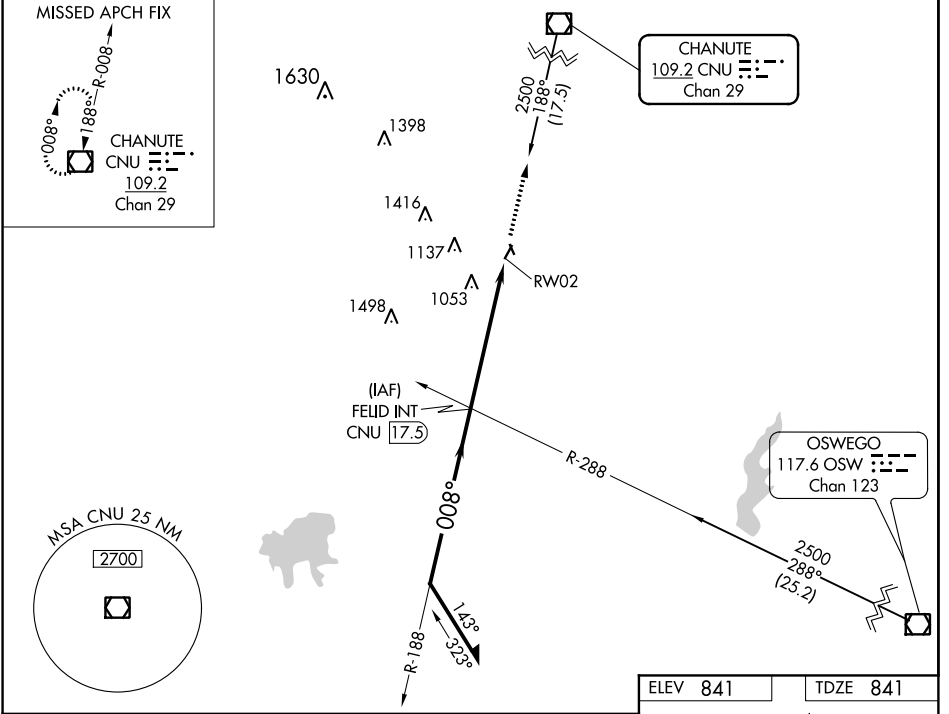
VOR/DME CNU 109.2 Chan 29	APP CRS 008°	Rwy Idg 2998 TDZE 841 Apt Elev 841
--	------------------------	---

VOR or GPS RWY 2

NEODESHA MUNI (2K7)

NA Use Chanute altimeter setting: when not received, use Joplin Rgnl altimeter setting. MISSED APPROACH: Climb to 2600 on CNU R-188 to CNU VOR/DME and hold.

KANSAS CITY CENTER **132.9 279.5** UNICOM **122.8 (CTAF)**



ELEV 841	TDZE 841
----------	----------

15
20
200 x 45
2998 x 45
200 x 45
33
0.7% UP
0.6% UP
008° 5.5 NM from FAF
LIRL Rwy 2-20
REIL Rws 2 and 20

FAF to MAP 5.5 NM					
Knots	60	90	120	150	180
Min:Sec	5:30	3:40	2:45	2:12	1:50

CATEGORY	A	B	C	D
S-2	1500-1	659 (700-1)	1500-1 $\frac{3}{4}$ 659 (700-1 $\frac{3}{4}$)	NA
CIRCLING	1500-1	659 (700-1)	1500-1 $\frac{3}{4}$ 659 (700-1 $\frac{3}{4}$)	NA
JOPLIN RGNL ALTIMETER SETTING MINIMUMS				
S-2	1600-1 759 (800-1)	1600-1 $\frac{1}{4}$ 759 (800-1 $\frac{1}{4}$)	1600-2 $\frac{1}{4}$ 759 (800-2 $\frac{1}{4}$)	NA
CIRCLING	1600-1 759 (800-1)	1600-1 $\frac{1}{4}$ 759 (800-1 $\frac{1}{4}$)	1600-2 $\frac{1}{4}$ 759 (800-2 $\frac{1}{4}$)	NA

NC-2, 10 OCT 2019 to 07 NOV 2019

NC-2, 10 OCT 2019 to 07 NOV 2019