

WAAS Ch 42626 W23A	APP CRS 232°	Rwy ldg TDZE Apt Elev	6202 568 577
--	------------------------	-----------------------------	---

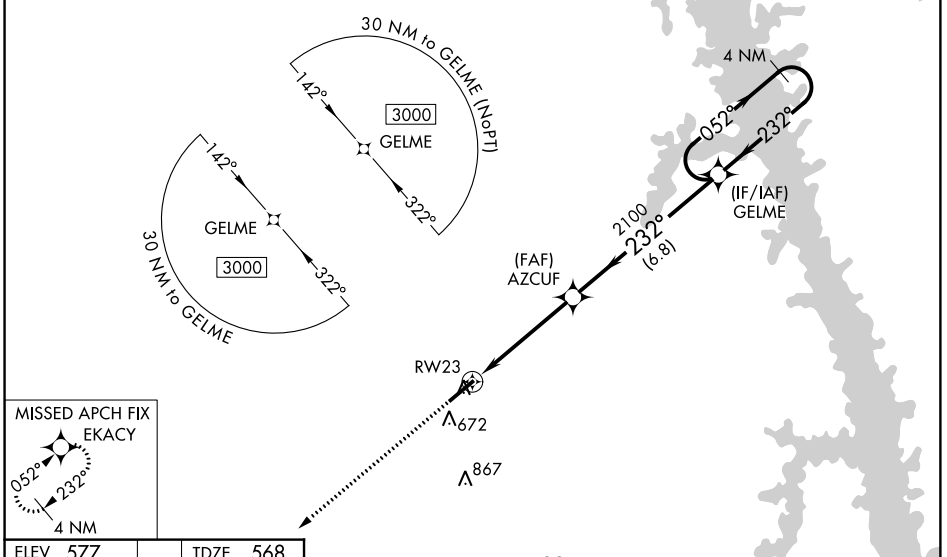
RNAV (GPS) RWY 23

KYLE-OAKLEY FIELD (CEY)

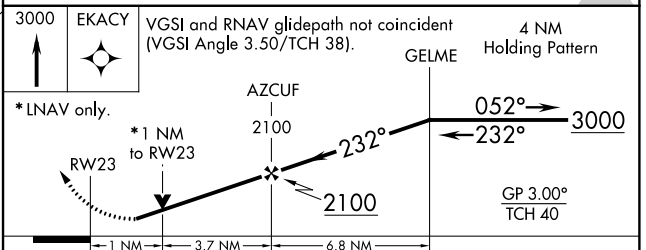
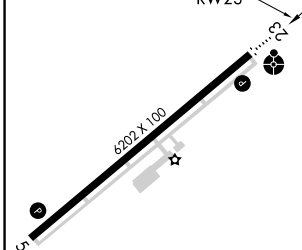
⚠ DME/DME RNP-0.3 NA. Baro-VNAV and VDP NA with Mayfield altimeter setting. When local altimeter setting not received use Mayfield altimeter setting: increase all DA/MDA 40 feet, and increase LPV, LNAV/VNAV all Cats, and LNAV C and D visibility 1/8 mile. For inop ODALS, increase LPV and LNAV/VNAV all Cats, and LNAV C and D visibility 1/4 mile. Helicopter visibility reduction below 3/4 SM NA. For uncompensated Baro-VNAV systems, LNAV/VNAV NA below -16°C (4°F) or above 54°C (130°F).

ODALS MISSED APPROACH: Climb to 3000 direct EKACY and hold.

AWOS-3 119.975	MEMPHIS CENTER 133.65 292-15	UNICOM 122.7 (CTAF) 0
--------------------------	--	--



ELEV 577	TDZE 568
----------	----------



CATEGORY	A	B	C	D
LPV DA		859-7/8	291 (300-7/8)	
LNAV/DA VNAV		861-7/8	293 (300-7/8)	
LNAV MDA	980-3/4	412 (500-3/4)	980-1	412 (500-1)
C CIRCLING	1000-1 423 (500-1)	1040-1 463 (500-1)	1040-1 1/2 463 (500-1 1/2)	1180-2 603 (700-2)

SE-1, 10 OCT 2019 to 07 NOV 2019

SE-1, 10 OCT 2019 to 07 NOV 2019