

WAAS CH <b>93901</b> <b>W36A</b>	APP CRS <b>001°</b>	Rwy Idg <b>6502</b> TDZE <b>296</b> Apt Elev <b>298</b>
--	------------------------	---

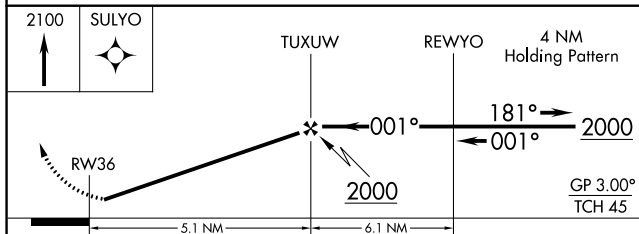
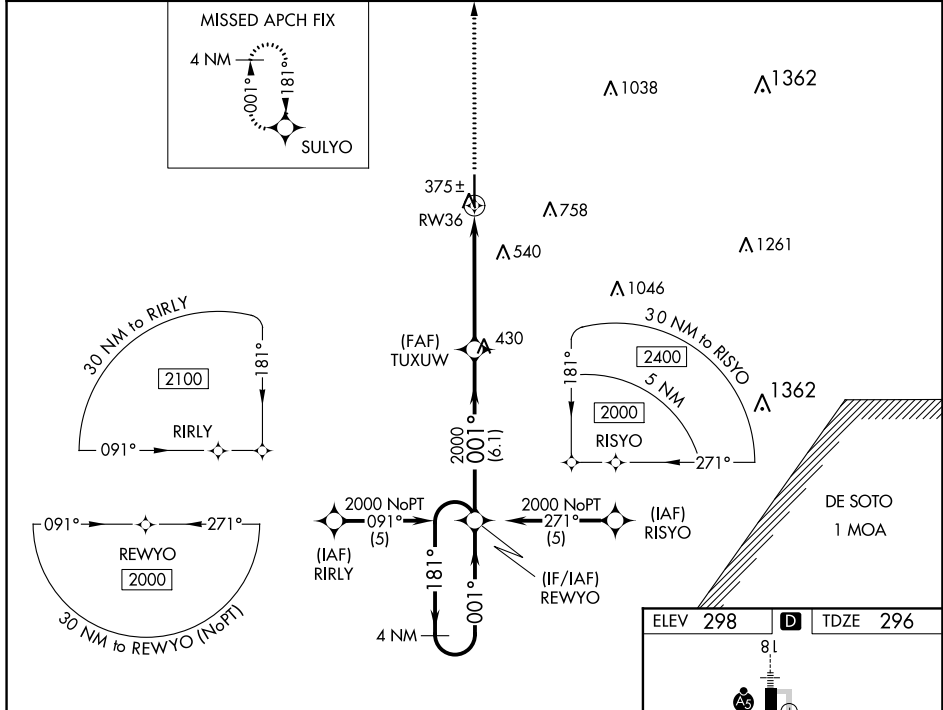
# RNAV (GPS) RWY 36

HATTIESBURG-LAUREL RGNL (PIB)

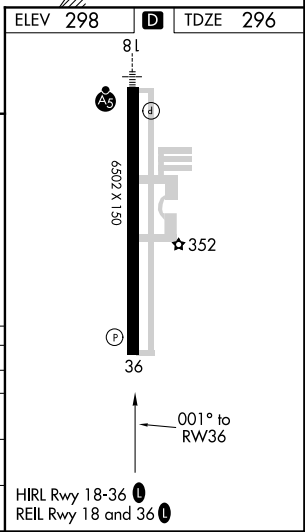
**⚠** For uncompensated Baro-VNAV systems, LNAV/VNAV NA below -1.5°C (5°F) or above 48°C (118°F). DME/DME RNP-0.3 NA. Visibility reduction by helicopters NA. When local altimeter setting not received, use Hattiesburg Bobby L. Chain Muni altimeter setting and increase all DA 51 feet and increase all MDA 60 feet, and increase LNAV MDA Cat C and D visibility ¼ mile. Baro-VNAV NA when using Hattiesburg Bobby L. Chain Muni altimeter setting.

**MISSED APPROACH:** Climb to 2100 direct SULYO and hold.

AWOS-3PT <b>128.325</b>	HOUSTON CENTER <b>126.8 327.8</b>	UNICOM <b>123.0 (CTAF) 0</b>
----------------------------	--------------------------------------	---------------------------------



CATEGORY	A	B	C	D
LPV DA	546-1		250 (300-1)	
LNAV/VNAV DA	625-1¼		329 (400-1¼)	
LNAV MDA	680-1		384 (400-1)	
CIRCLING	740-1 442 (500-1)	760-1 462 (500-1)	760-1½ 462 (500-1½)	860-2 562 (600-2)



SC-4, 10 OCT 2019 to 07 NOV 2019

SC-4, 10 OCT 2019 to 07 NOV 2019