

WAAS CH <b>49201</b> <b>W18A</b>	APP CRS <b>181°</b>	Rwy ldg <b>6502</b> TDZE <b>298</b> Apt Elev <b>298</b>
--	------------------------	---

# RNAV (GPS) RWY 18

HATTIESBURG-LAUREL RGNL (PIB)

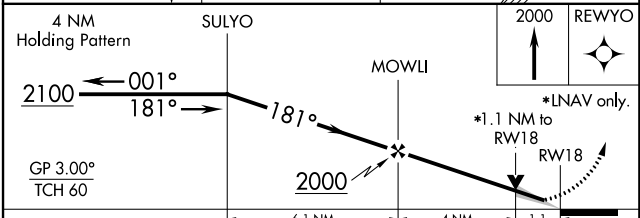
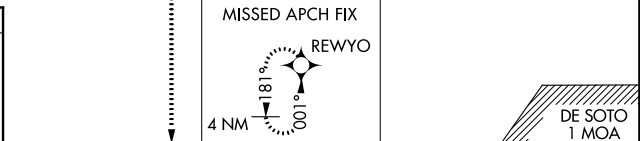
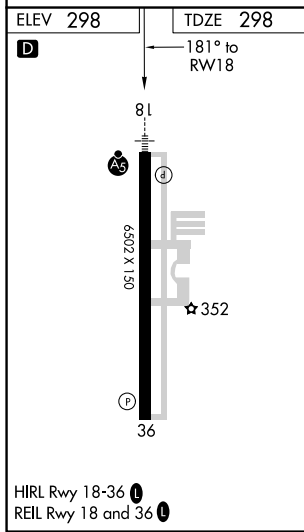
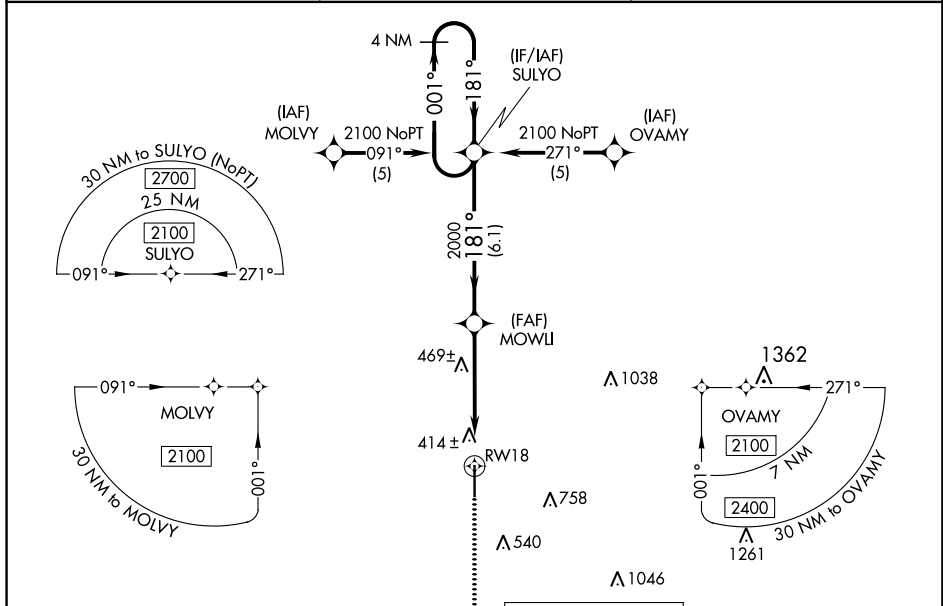
**⚠** For inoperative MALSRS, increase LNAV Cat D visibility to 1½ mile. Baro-VNAV NA when using Bobby L. Chain Muni altimeter setting. For uncompensated Baro-VNAV systems, LNAV/VNAV NA below -15°C (5°F) or above 48°C (118°F). DME/DME RNP-0.3 NA. When local altimeter setting not received, use Hattiesburg Bobby L. Chain Muni altimeter setting and increase all DA 51 feet and increase all MDA 60 feet, and increase LNAV/VNAV all Cats visibility ¼ mile. VDP NA with Bobby L. Chain Muni altimeter setting.

MALSRS



**MISSED APPROACH:**  
Climb to 2000 direct  
REWYO and hold.

AWOS-3PT <b>128.325</b>	HOUSTON CENTER <b>126.8 327.8</b>	UNICOM <b>123.0 (CTAF) ①</b>
----------------------------	--------------------------------------	---------------------------------



CATEGORY	A	B	C	D
LPV DA		498-½	200 (200-½)	
LNAV/VNAV DA		691-¾	393 (400-¾)	
LNAV MDA	720-½	422 (500-½)	720-¾	720-1
			422 (500-¾)	422 (500-1)
CIRCLING	740-1	760-1	760-1½	860-2
	442 (500-1)	462 (500-1)	462 (500-1½)	562 (600-2)

SC-4, 10 OCT 2019 to 07 NOV 2019

SC-4, 10 OCT 2019 to 07 NOV 2019