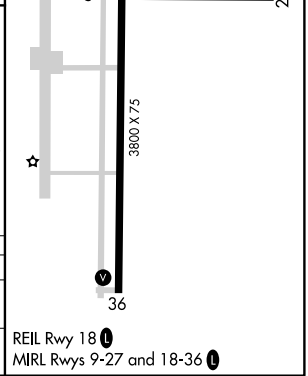
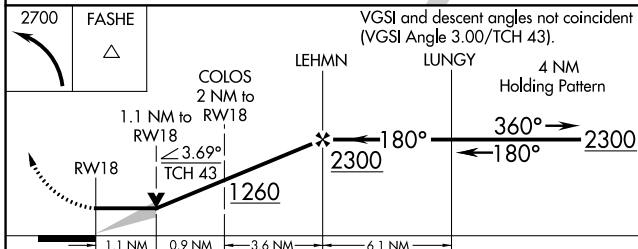
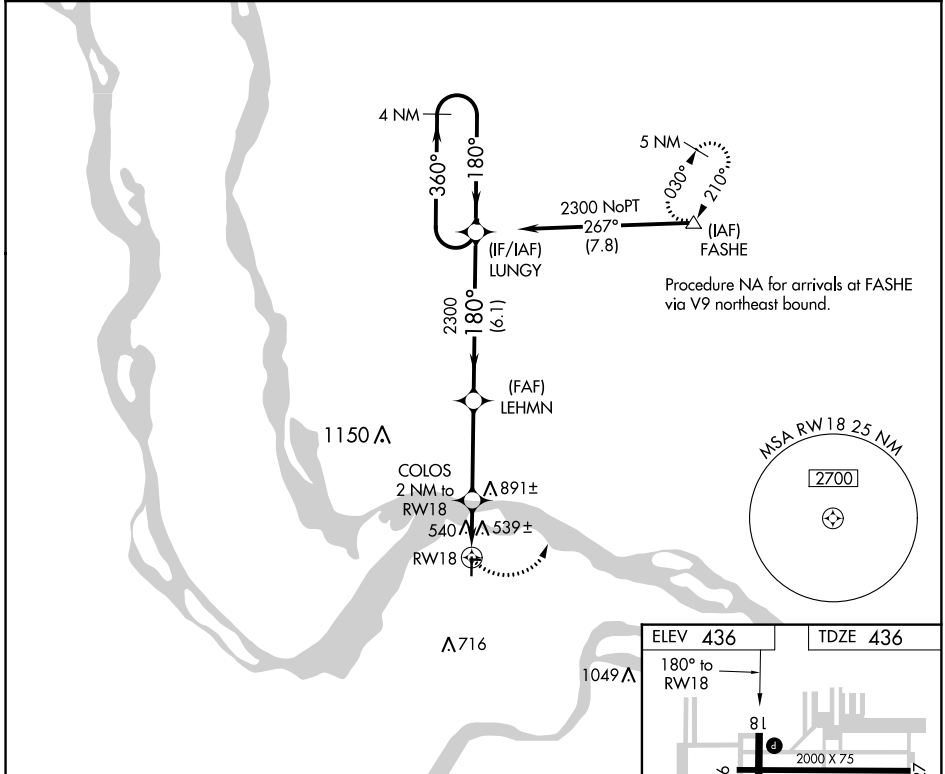


APP CRS	Rwy Idg	<b>3800</b>
<b>180°</b>	TDZE	<b>436</b>
	Apt Elev	<b>436</b>

# RNAV (GPS) RWY 18

ST CHARLES COUNTY SMARTT (S/E/T)

<p><b>▽</b> DME/DME RNP-0.3 NA.</p> <p><b>▲</b> If local altimeter setting not received, use St Louis Lambert Intl altimeter setting and increase all MDAs 60 feet. VDP NA with St Louis Lambert Intl altimeter setting.</p>	<p>MISSED APPROACH: Climbing left turn to 2700 direct FASHE and hold.</p>		
	<p>ASOS</p> <p><b>118.075</b></p>	<p>ST. LOUIS APP CON</p> <p><b>124.2 353.9</b></p>	<p>CLNC DEL</p> <p><b>121.6</b></p>



	<p>2700 FASHE</p> <p>△</p>		<p>VGSI and descent angles not coincident (VGSI Angle 3.00/TCH 43).</p>	
CATEGORY	A	B	C	D
RNAV MDA	840-1	404 (500-1)	840-1½ 404 (500-1½)	NA
CIRCLING	840-1 404 (500-1)	900-1 464 (500-1)	900-1½ 464 (500-1½)	NA

NC-3, 10 OCT 2019 to 07 NOV 2019

NC-3, 10 OCT 2019 to 07 NOV 2019