

APP CRS	Rwy Idg	5004
192°	TDZE	269
	Apt Elev	278

RNAV (GPS) RWY 19

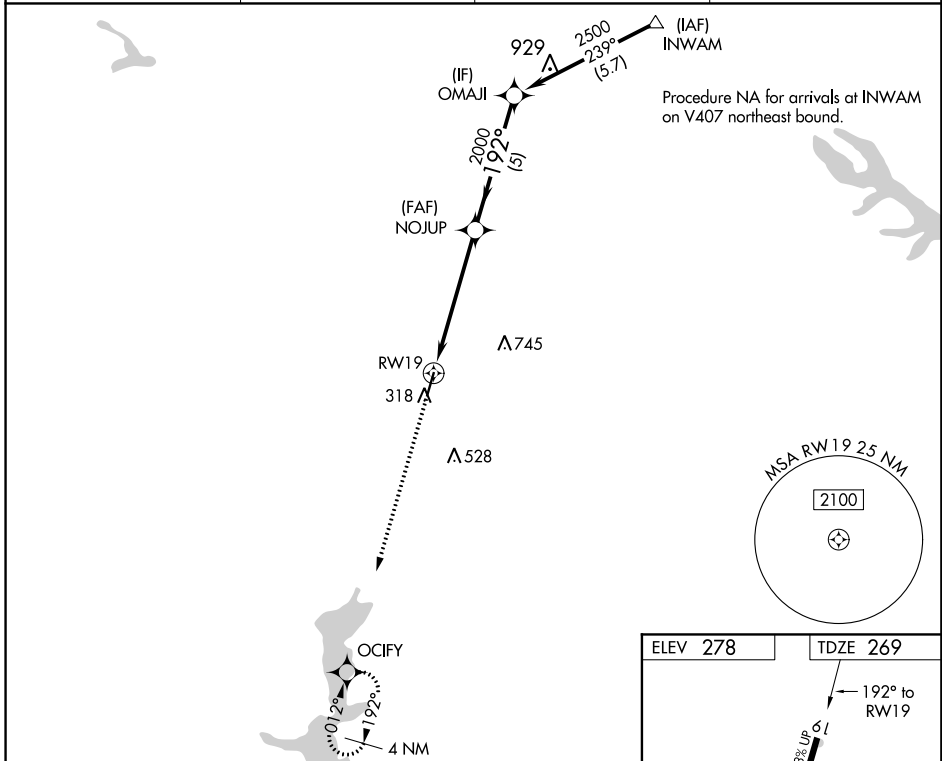
MINDEN (MNE)

RNP APCH.

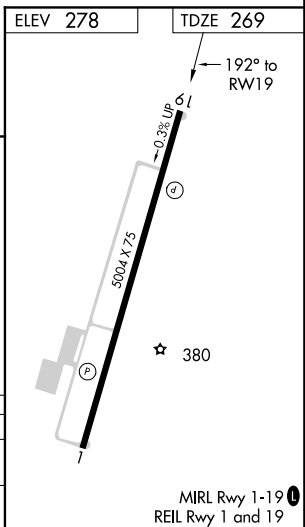
▼ Rwy 19 helicopter visibility reduction below 3/4 SM NA. Obtain local altimeter setting on CTAF; when not received, use Barksdale AFB altimeter setting and increase all MDA 80 feet; increase visibility LNAV Cats C and D and Circling Cat C to 1 3/4 SM.

▲ MISSED APPROACH: Climb to 2500 direct OCIFY and hold.

AWOS-3PT 119.325	SHREVEPORT APP CON 118.6 350.2	GCO 135.075	UNICOM 122.8 (CTAF) 0
----------------------------	--	-----------------------	---------------------------------



2500	OCIFY	Visual Segment - Obstacles.			
CATEGORY	A	B	C	D	
LNAV MDA	820-1	551 (600-1)	820-1 5/8	551 (600-1 1/8)	
CIRCLING	820-1	542 (600-1)	820-1 5/8	840-2	
			542 (600-1 1/8)	562 (600-2)	



SC-4, 10 OCT 2019 to 07 NOV 2019

SC-4, 10 OCT 2019 to 07 NOV 2019