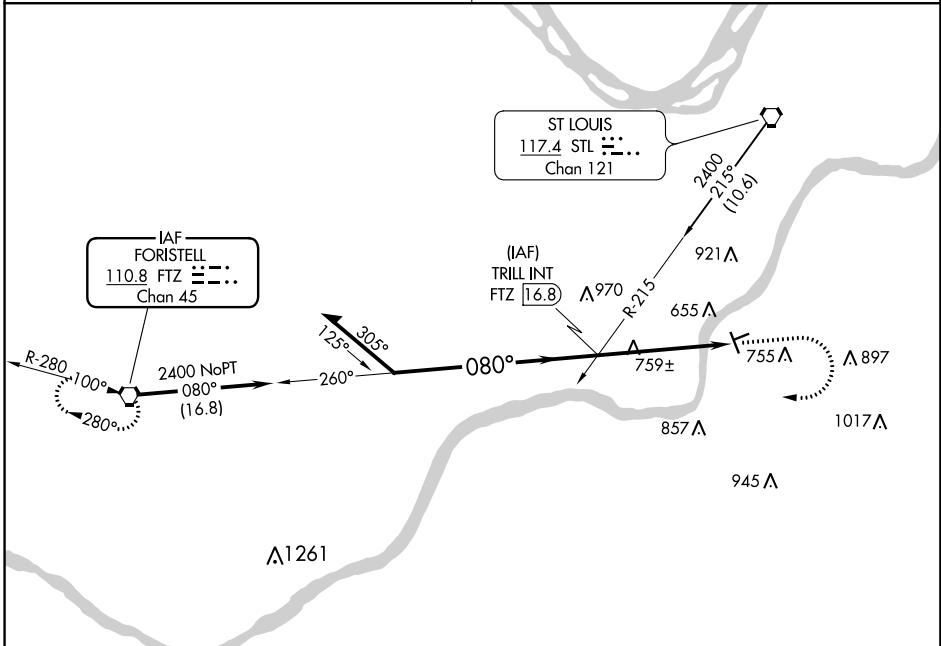


VORTAC FTZ <b>110.8</b> Chan <b>45</b>	APP CRS <b>080°</b>	Rwy Idg TDZE Apt Elev	<b>N/A</b> <b>N/A</b> <b>462</b>
--	------------------------	-----------------------------	--

**VOR-A**  
CREVE COEUR (1H0)

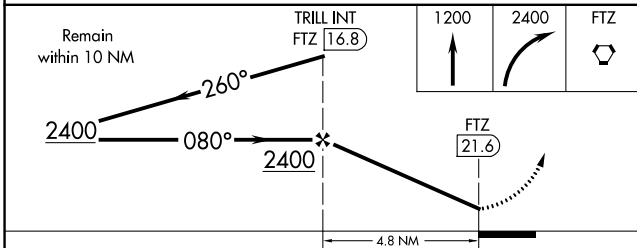
<p><b>▼</b> Use St Louis Lambert Intl altimeter setting. <b>▲</b> NA Circling NA to Rwy 7 and 25. Circling Rwy 16 NA at night.</p>	<p><b>MISSED APPROACH:</b> Climb to 1200 then climbing right turn to 2400 direct FTZ VORTAC and hold.</p>
--	---

<p>ST. LOUIS APP CON <b>126.5 254.3</b></p>	<p>UNICOM <b>122.8</b> (CTAF) <b>0</b></p>
---	--



NC-3, 10 OCT 2019 to 07 NOV 2019

NC-3, 10 OCT 2019 to 07 NOV 2019



CATEGORY	A	B	C	D	FAF to MAP 4.8 NM					
CIRCLING	1060-1 598 (600-1)	1080-1¼ 618 (700-1¼)	NA		Knots	60	90	120	150	180
					Min:Sec	4:48	3:12	2:24	1:55	1:36