

ST. LOUIS, MISSOURI

AL-5910 (FAA)

18256

WAAS CH 93905 W34A	APP CRS 338°	Rwy Idg TDZE Apt Elev	4500 462 462
--	------------------------	-----------------------------	---

RNAV (GPS) RWY 34

CREVE COEUR (1H(0))

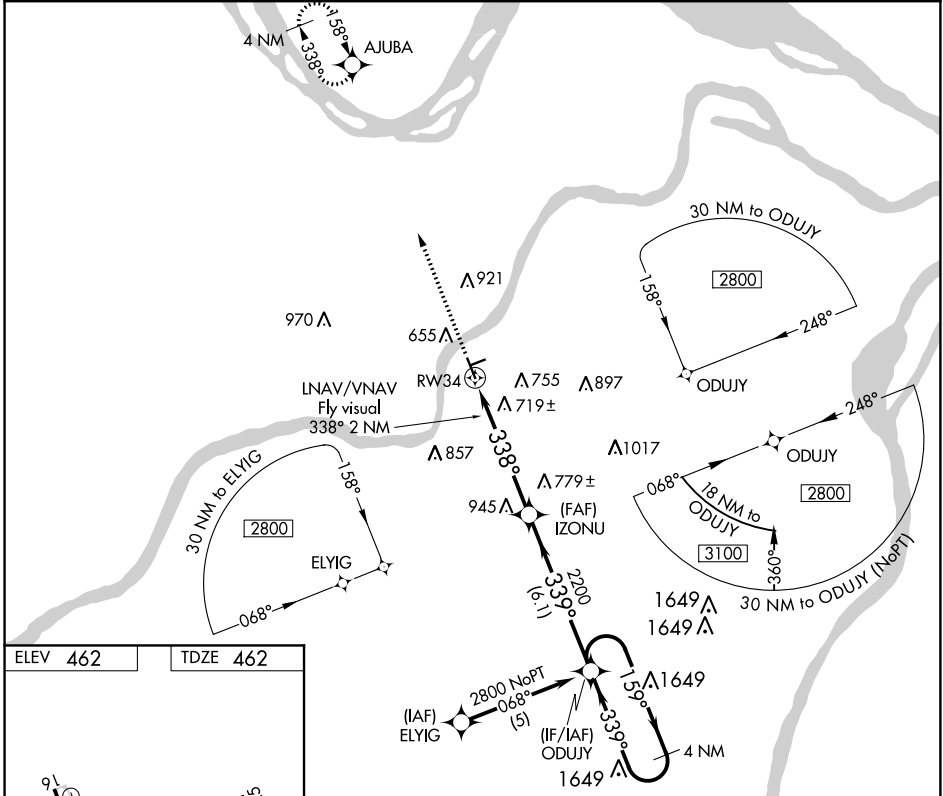
RNP APCH.

V Use St Louis Lambert Intl altimeter setting. Baro-VNAV NA. Circling Rwy 16 NA at night.
A NA Circling NA to Rwy 7 and 25. Rwy 34 helicopter visibility reduction below ¾ SM NA.

MISSED APPROACH:
Climb to 2700 direct
AJUBA and hold.

ST. LOUIS APP CON
126.5 254.3

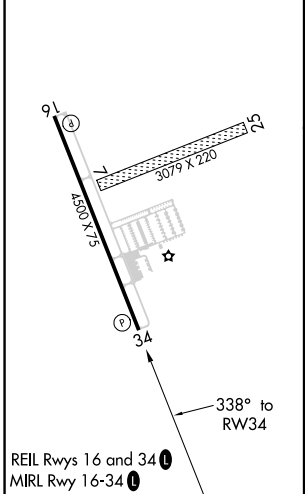
UNICOM
122.8 (CTAF) **0**



NC-3, 10 OCT 2019 to 07 NOV 2019

NC-3, 10 OCT 2019 to 07 NOV 2019

ELEV 462	TDZE 462
----------	----------



ST. LOUIS, MISSOURI
Amdt 1A 13SEP18

38°44'N-90°31'W

RNAV (GPS) RWY 34

2700	AJUBA	VGSIs and RNAV glidepath not coincident. (VGSIs Angle 3.00°/TCH 43).		4 NM Holding Pattern
↑				
	RW34	IZONU	ODUJY	2800
	LNNAV/VNAV Fly visual 338° 2 NM	338°	339°	2200
		5.3 NM	6.1 NM	
CATEGORY	A	B	C	D
LPV DA	809-1¼	347 (400-1¼)		NA
LNNAV/VNAV DA	1131-2	669 (700-2)		NA
LNNAV MDA	1080-1	618 (700-1)		NA
CIRCLING	1080-1	618 (700-1)		NA