

WAAS CH 56534 W08A	APP CRS 082°	Rwy Idg 7972 TDZE 526 Apt Elev 526
--	------------------------	---

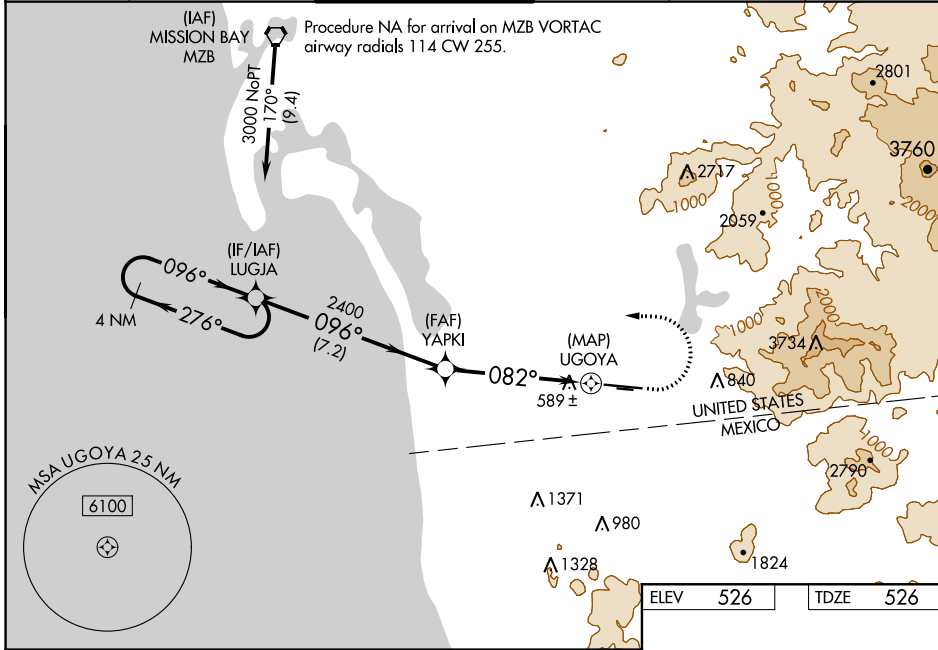
RNAV (GPS) RWY 8L

BROWN FIELD MUNI (SDM)

⚠ DME/DME RNP-0.3 NA. Circling NA south of Rwy 8R-26L. For uncompensated Baro-VNAV systems, LNAV/VNAV NA below 2°C (36°F) or above 54°C (130°F). Baro-VNAV NA when using San Diego Intl altimeter setting. When local altimeter setting not received, use San Diego Intl altimeter setting and increase all DA 105 feet and all MDA 120 feet, increase LPV all Cats visibility ¼ mile, LNAV/VNAV all Cats, and LNAV Cats C and D visibility ⅜ mile, and Circling Cat C visibility ½ mile.

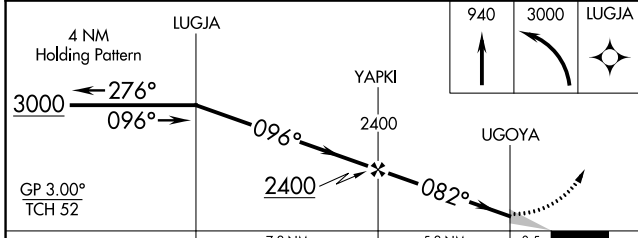
MISSED APPROACH: (Do not exceed 210K until LUGJA) Climb to 940 then climbing left turn to 3000 direct LUGJA and hold.

ATIS 132.35	SOCAL APP CON 124.35 279.625	BROWN TOWER * 128.25 (CTAF) 0 225.4	GND CON 124.4	CLNC DEL 124.4	UNICOM 122.95
-----------------------	--	--	-------------------------	--------------------------	-------------------------



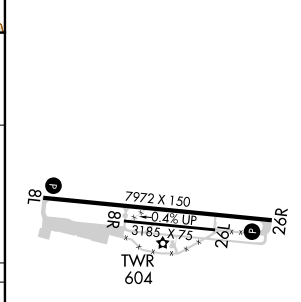
SW-3, 10 OCT 2019 to 07 NOV 2019

SW-3, 10 OCT 2019 to 07 NOV 2019



ELEV	526	TDZE	526
------	-----	------	-----

CATEGORY	A	B	C	D
LPV DA		726-¾	200 (200-¾)	
LNAV/VNAV DA		776-¾	250 (300-¾)	
LNAV MDA	840-1	314 (400-1)	840-⅞	314 (400-⅞)
C CIRCLING	980-1 454 (500-1)	1000-1 474 (500-1)	1180-1¾ 654 (700-1¾)	2260-3 1734 (1800-3)



- REIL Rwy 26R
- REIL Rwy 8L **0**
- MIRL Rwy 8R-26L **0**
- HIRL Rwy 8L-26R **0**