

WAAS CH 72922 W36A	APP CRS 005°	Rwy Idg 5301 TDZE 721 Apt Elev 730
--	------------------------	---

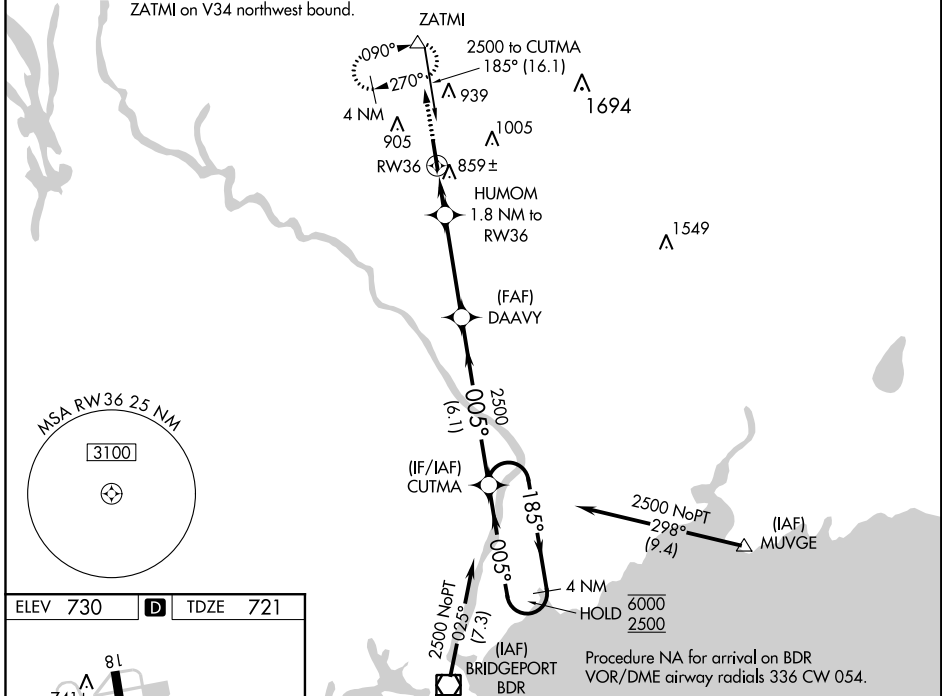
RNAV (GPS) RWY 36

WATERBURY-OXFORD (OXC)

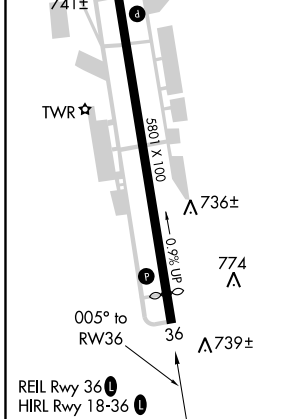
RNP APCH.		MISSED APPROACH: Climb to 3000 direct ZATMI and hold, continue climb-in-hold to 3000.	
<p>▼ Rwy 36 helicopter visibility reduction below 3/4 SM NA. ▲ For uncompensated Baro-VNAV systems, LNAV/VNAV NA below -16°C or above 54°C.</p>			

ATIS 132.975	NEW YORK APP CON 124.075 343.65	OXFORD TOWER ★ 118.475 (CTAF) 0	GND CON 121.65	CLNC DEL 121.65	UNICOM 122.95
------------------------	---	--	--------------------------	---------------------------	-------------------------

Procedure NA for arrivals at ZATMI on V34 northwest bound.



ELEV 730	D	TDZE 721
----------	----------	----------



3000	ZATMI	*LNAV only	HUMOM 1.8 NM to RW36	DAAVY 2500	CUTMA	4 NM Holding Pattern
			*1.2 NM to RW36			
			RW36			
			*1300			
			1.2	0.6 NM	3.7 NM	6.1 NM
CATEGORY	A	B	C	D		
LPV DA		971-3/4	250 (300-3/4)			
LNAV/VNAV DA		1097-1	376 (400-1)			
LNAV MDA	1120-1	399 (400-1)	1120-1 1/8	399 (400-1 1/8)		
C CIRCLING	1300-1	570 (600-1)	1380-1 3/4	650 (700-1 3/4)	1460-2 1/4	730 (800-2 1/4)

NE-1, 10 OCT 2019 to 07 NOV 2019

NE-1, 10 OCT 2019 to 07 NOV 2019