

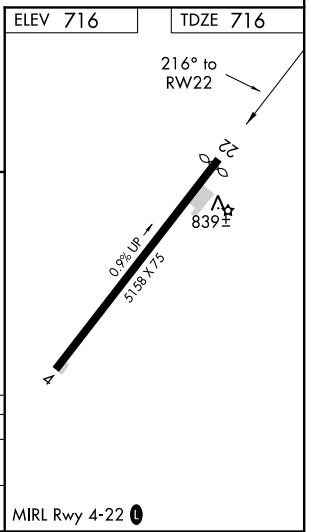
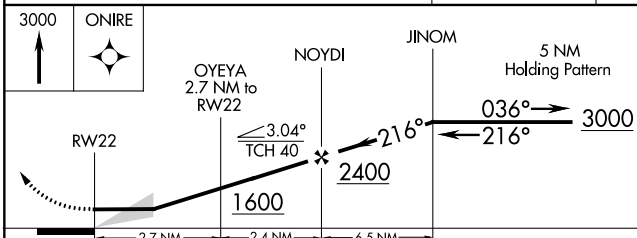
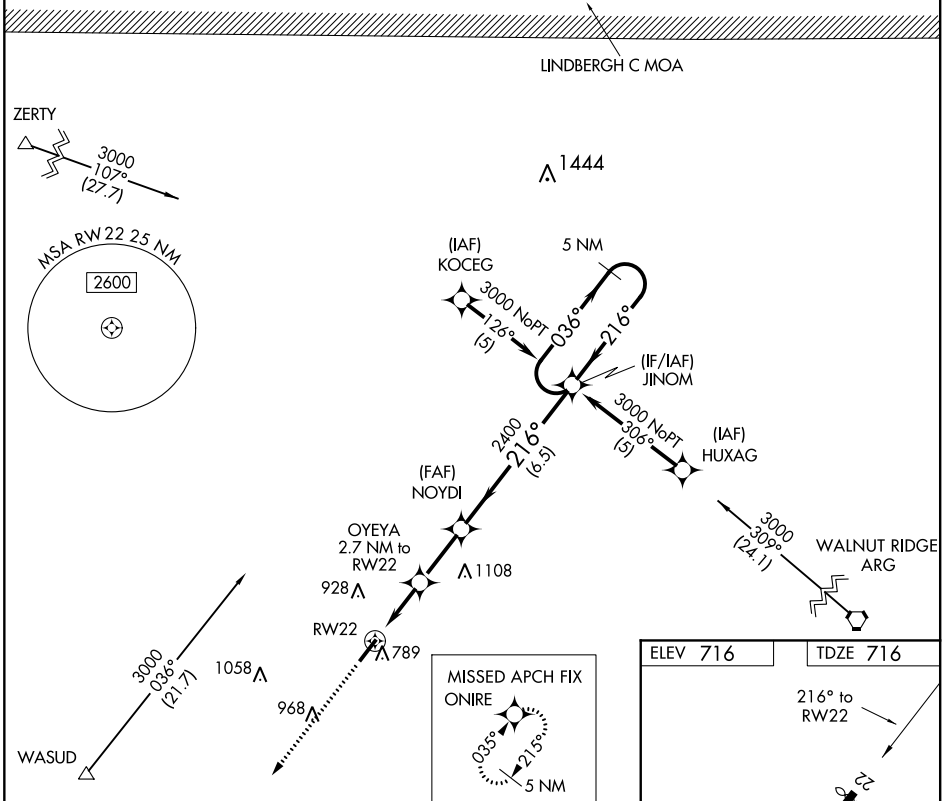
APP CRS	Rwy Idg	<b>5004</b>
<b>216°</b>	TDZE	<b>716</b>
	Apt Elev	<b>716</b>

# RNAV (GPS) RWY 22

SHARP COUNTY RGNL (CVK)

RNP APCH.	MISSED APPROACH: Climb to 3000 direct ONIRE and hold.
<p>▼ Use Walnut Ridge altimeter setting; if not received, use Jonesboro altimeter setting and increase all MDAs 60 feet. Circling Rwy 4 NA at night.</p> <p>▲ NA</p>	

MEMPHIS CENTER <b>120.075 289.4</b>	UNICOM <b>122.7 (CTAF) 0</b>
--	---------------------------------



CATEGORY	A	B	C	D
RNAV MDA	1360-1	644 (700-1)	1360-1¾ 644 (700-1¾)	NA
CIRCLING	1400-1	684 (700-1)	1400-2 684 (700-2)	NA

SC-1, 10 OCT 2019 to 07 NOV 2019

SC-1, 10 OCT 2019 to 07 NOV 2019