

NDB JDM <b>408</b>	APP CRS <b>172°</b>	Rwy ldg <b>5110</b> TDZE <b>3187</b> Apt Elev <b>3187</b>
-----------------------	------------------------	---

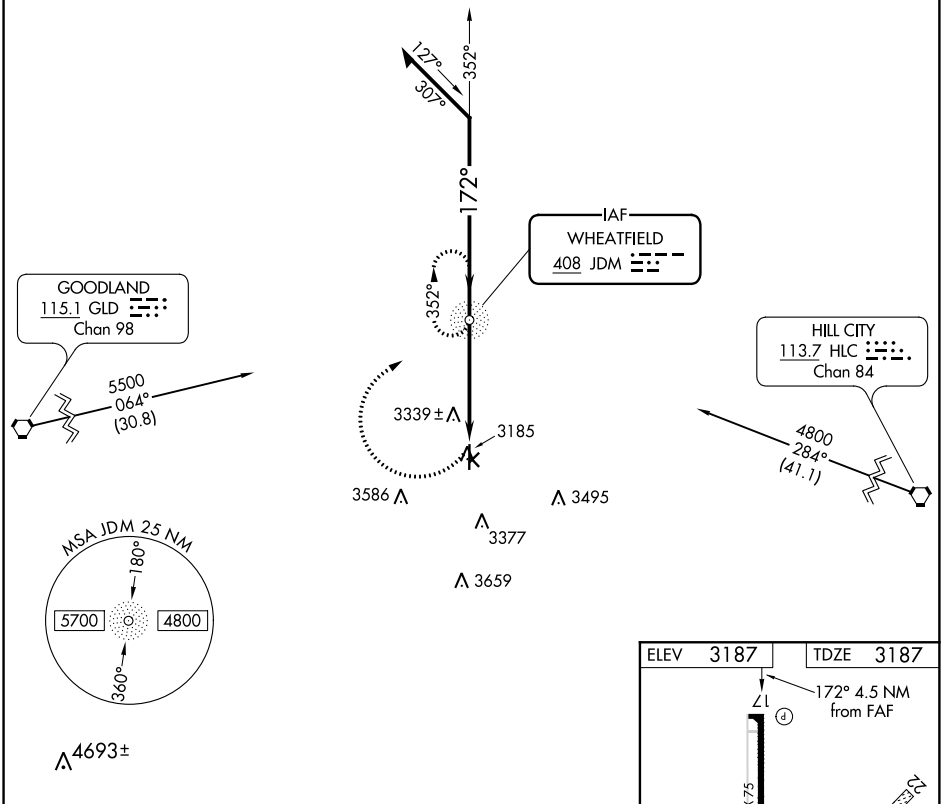
# NDB RWY 17

SHALZ FIELD (CBK)

▼ Straight-in and Circling Rwy 17 NA at night. Circling Rwy 4, 12, 22, 30 NA.  
 ▲ NA When local altimeter setting not received, use Goodland altimeter setting and increase all MDA 140 feet and increase S-17 Cat C visibility 3/8 SM and Circling Cat C visibility 1/4 SM. Rwy 17 helicopter visibility reduction below 1 SM NA.

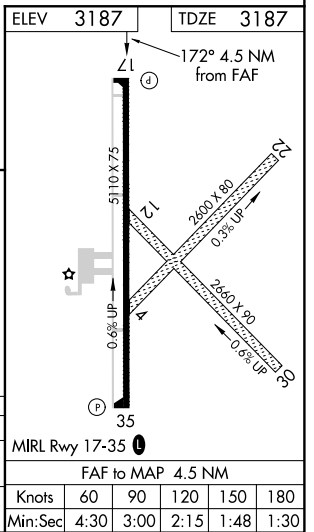
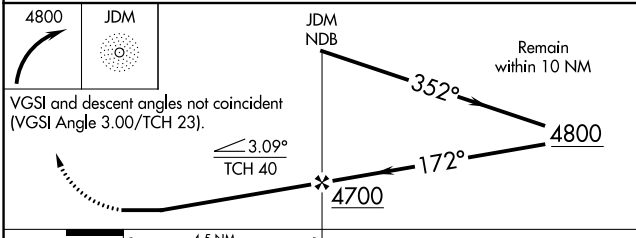
MISSED APPROACH: Climbing right turn to 4800 direct JDM NDB and hold.

AWOS-3 <b>118.175</b>	DENVER CENTER <b>132.7 226.675</b>	UNICOM <b>122.8 (CTAF) 0</b>
--------------------------	---------------------------------------	---------------------------------



NC-2, 10 OCT 2019 to 07 NOV 2019

NC-2, 10 OCT 2019 to 07 NOV 2019



CATEGORY	A	B	C	D
S-17	3640-1	453 (500-1)	3640-1 3/8 453 (500-1 3/8)	NA
CIRCLING	3640-1	453 (500-1)	3640-1 1/2 453 (500-1 1/2)	NA