

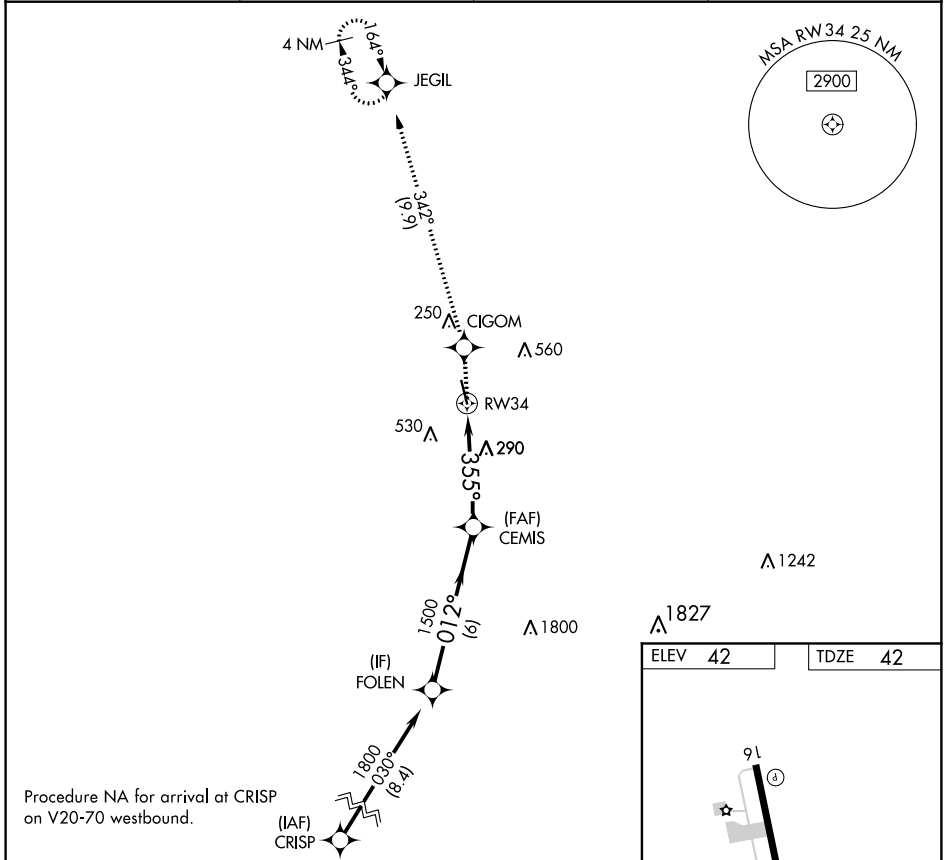
APP CRS <b>355°</b>	Rwy Idg TDZE Apt Elev	<b>5001</b> <b>42</b> <b>42</b>
------------------------	-----------------------------	---------------------------------------

# RNAV (GPS) RWY 34

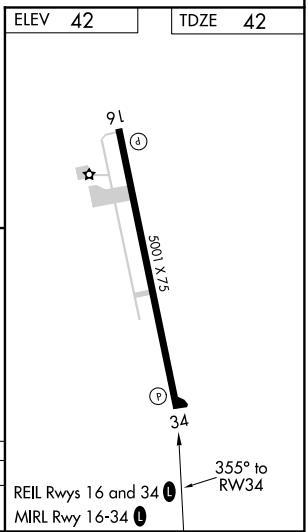
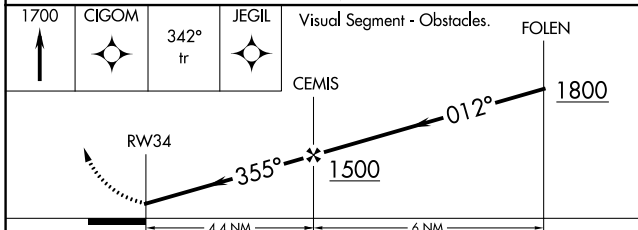
EUNICE (4R7)

RNP APCH.	MISSED APPROACH: Climb to 1700 direct CIGOM and on 342° track to JEGIL and hold.
<p>▼ Procedure NA at night. Rwy 34 helicopter visibility reduction below 1 SM NA. Use Lafayette Rgnl/Paul Fournet Field altimeter setting.</p> <p>▲ NA</p>	

LFT ASOS <b>134.05</b>	LAFAYETTE APP CON ★ <b>128.7 268.7</b>	GCO <b>135.075</b>	UNICOM <b>122.8 (CTAF) 0</b>
---------------------------	---	-----------------------	---------------------------------



Procedure NA for arrival at CRISP on V20-70 westbound.



CATEGORY	A	B	C	D
LNAV MDA	660-1 618 (700-1)	660-1 618 (700-1 3/4)	660-1 3/4 618 (700-1 3/4)	NA

SC-4, 10 OCT 2019 to 07 NOV 2019

SC-4, 10 OCT 2019 to 07 NOV 2019