

WAAS CH 69422 W36A	APP CRS 359°	Rwy Idg 3715 TDZE 11 Apt Elev 11
--	------------------------	---

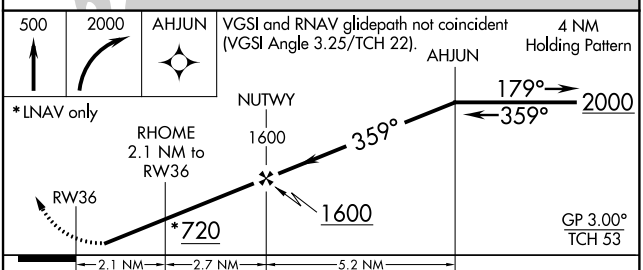
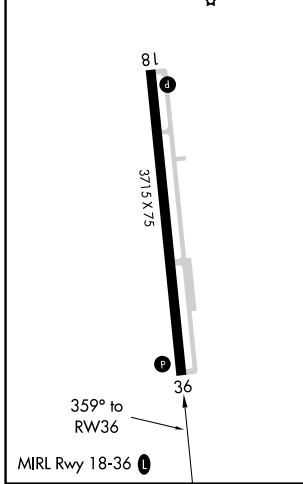
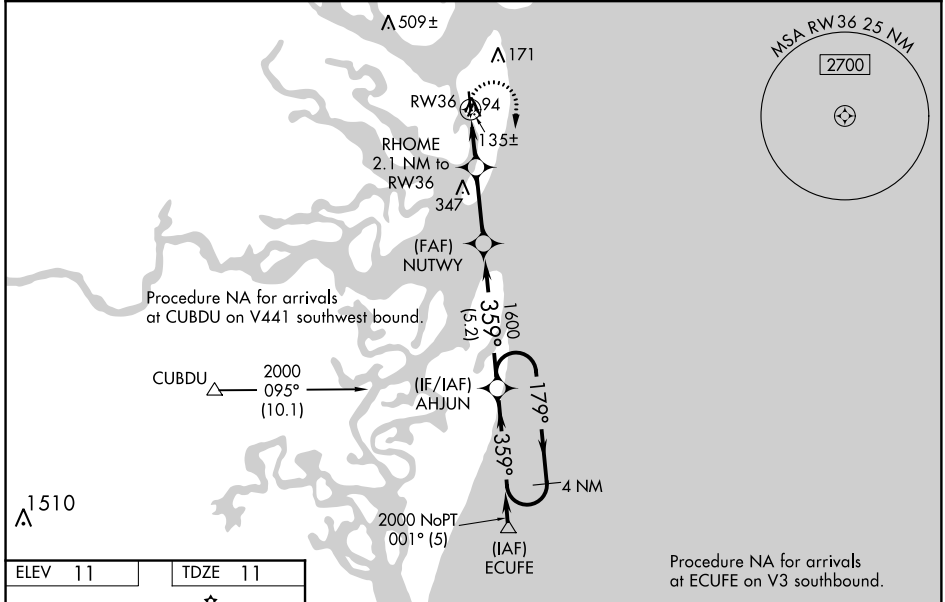
RNAV (GPS) RWY 36

JEKYLL ISLAND (09J)

NA Baro-VNAV NA when using Jacksonville Intl altimeter setting. For uncompensated Baro-VNAV systems, LNAV/VNAV NA below -15°C (5°F) or above 54°C (130°F). When VGSI inop, straight-in/Circling Rwy 36 procedure NA at night. DME/DME RNP-0.3 NA. Visibility reduction by helicopters NA. Use Brunswick altimeter setting, when not received, use Jacksonville Intl altimeter setting and increase LPV DA to 389 LNAV/VNAV DA to 386 and all MDA 100 feet and LPV and LNAV/VNAV visibility all Cats ¼ mile.

MISSED APPROACH:
Climb to 500 then climbing right turn to 2000 direct AHJUN and hold.

SSI ASOS 120.025	JACKSONVILLE CENTER 126.75 277.4	UNICOM 123.05 (CTAF) 0
----------------------------	--	----------------------------------



CATEGORY	A	B	C	D
LPV DA	300-1	289 (300-1)		NA
LNAV/VNAV DA	297-1	286 (300-1)		NA
LNAV MDA	400-1	389 (400-1)		NA
CIRCLING	520-1	509 (600-1)		NA

SE-4, 10 OCT 2019 to 07 NOV 2019

SE-4, 10 OCT 2019 to 07 NOV 2019