

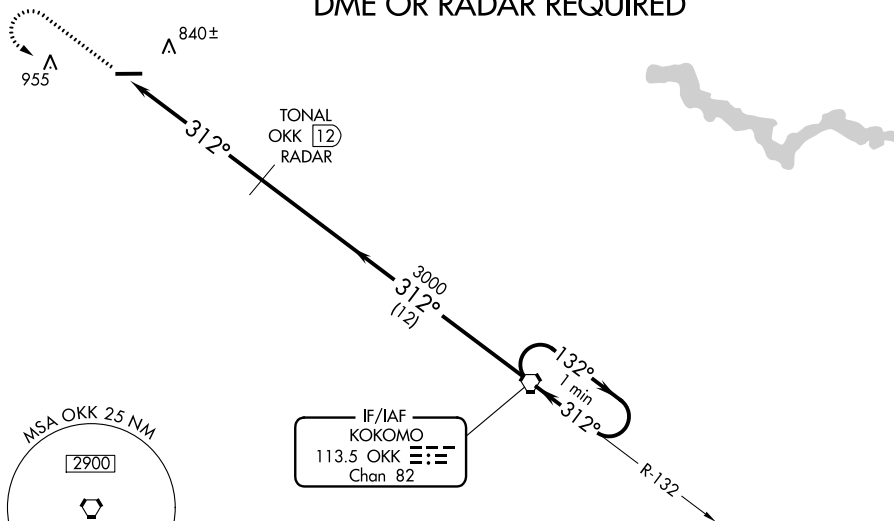
VORTAC OKK <b>113.5</b> Chan <b>82</b>	APP CRS <b>312°</b>	Rwy Idg TDZE Apt Elev	<b>N/A</b> <b>N/A</b> <b>738</b>
--	------------------------	-----------------------------	--

**VOR-A**  
LOGANSPO/CASS COUNTY (GGP)

**⚠** When local altimeter setting not received, use Grissom ARB altimeter setting. MISSED APPROACH: Climb to 3000, then left turn on OKK VORTAC R-312 to OKK VORTAC and hold.

AWOS-3P <b>118.5</b>	GRISSOM APP CON ★ <b>121.05 338.275</b>	UNICOM <b>122.8</b> (CTAF) <b>0</b>
-------------------------	--	--

**DME OR RADAR REQUIRED**



NoPT for arrival on OKK VORTAC airway radials 060 CW 204.

ELEV 738 **D**

MIRL Rwy 9-27 **0**  
REIL Rwys 9 and 27 **0**  
FAF to MAP 5.9 NM

Knots	60	90	120	150	180
Min:Sec	5:54	3:56	2:57	2:22	1:58

ELEV 1649 **A**

3000 OKK R-312 OKK VORTAC One Minute Holding Pattern

OKK 17.9	5.9 NM	12 NM
----------	--------	-------

CATEGORY	A	B	C	D
CIRCLING	1200-1	462 (500-1)	1200-1½ 462 (500-1½)	1300-2 562 (600-2)
GRISSOM ARB ALTIMETER SETTING MINIMUMS				
CIRCLING	1240-1	502 (600-1)	1240-1½ 502 (600-1½)	1340-2 602 (700-2)

EC-2, 10 OCT 2019 to 07 NOV 2019

EC-2, 10 OCT 2019 to 07 NOV 2019