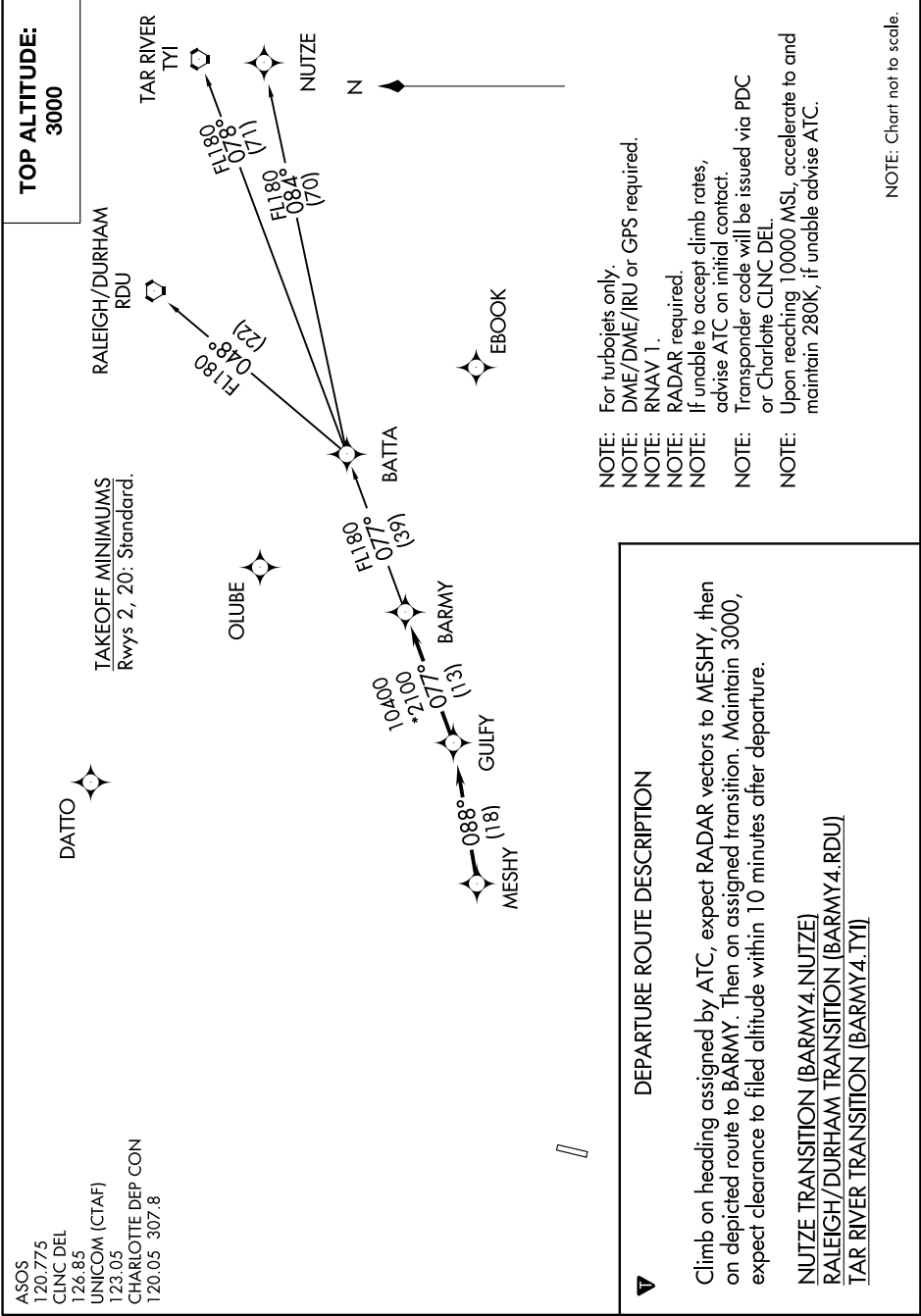


BARMY FOUR DEPARTURE (RNAV)

SE-2, 10 OCT 2019 to 07 NOV 2019



ASOS
120.775
CLNC DEL
124.85
UNICOM (CTAF)
123.05
CHARLOTTE DEP CON
120.05 307.8

TAKEOFF MINIMUMS
Rwys 2, 20: Standard.

TOP ALTITUDE:
3000

- NOTE: For turbojets only.
NOTE: DME/DME/IRU or GPS required.
NOTE: RNAV 1.
NOTE: RADAR required.
NOTE: If unable to accept climb rates, advise ATC on initial contact.
NOTE: Transponder code will be issued via PDC or Charlie CLNC DEL.
NOTE: Upon reaching 10000 MSL, accelerate to and maintain 280K, if unable advise ATC.

DEPARTURE ROUTE DESCRIPTION

Climb on heading assigned by ATC, expect RADAR vectors to MESHY, then on depicted route to BARMY. Then on assigned transition. Maintain 3000, expect clearance to filed altitude within 10 minutes after departure.

- NUTZE TRANSITION (BARMY4.NUTZE)
- RALEIGH/DURHAM TRANSITION (BARMY4.RDU)
- TAR RIVER TRANSITION (BARMY4.TYI)

NOTE: Chart not to scale.

BARMY FOUR DEPARTURE (RNAV)

SE-2, 10 OCT 2019 to 07 NOV 2019