

VOR/DME PKD <b>110.6</b> Chan <b>43</b>	APP CRS <b>136°</b>	Rwy Idg TDZE <b>1445</b> Apt Elev <b>1445</b>
---	------------------------	---

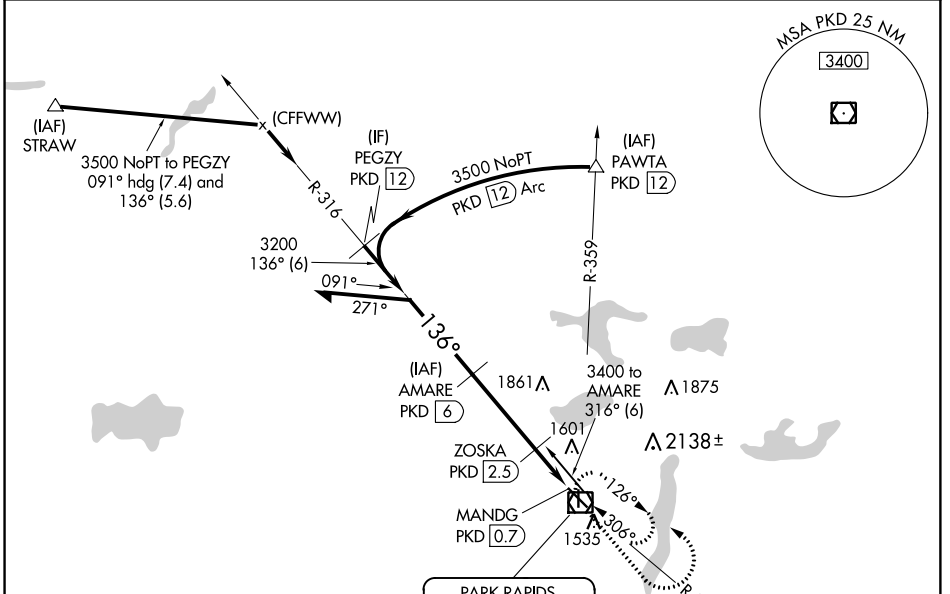
# VOR RWY 13

PARK RAPIDS MUNI-KONSHOK FIELD (PKD)

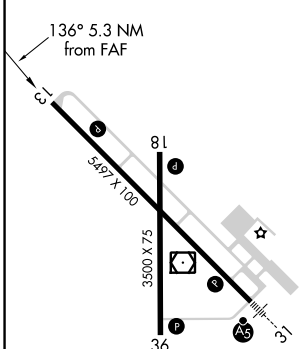
**⚠** Circling Rwy 18, 36 NA at night. DME required. Helicopter visibility reduction below 3/4 SM NA. VDP NA when using Wadena altimeter setting. When local altimeter setting not received, use Wadena altimeter setting and increase all MDA 80 feet; increase S-13 Cat C/D visibility 1/8 mile and increase Circling Cat C visibility 1/4 mile.

**⚠** MISSED APPROACH: Climb to 3200 then left turn direct PKD VOR/DME and hold.

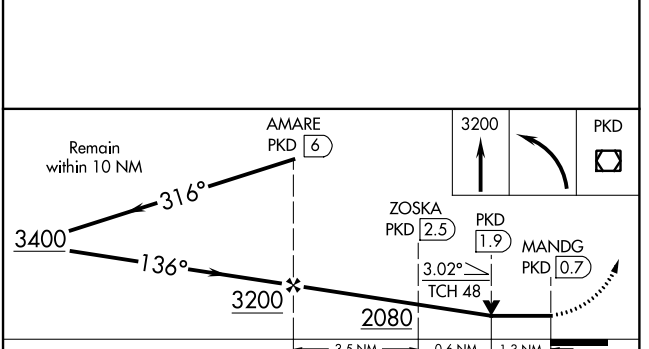
ASOS <b>110.6</b>	MINNEAPOLIS CENTER <b>134.75 251.1</b>	PRINCETON RADIO <b>122.1R</b>	UNICOM <b>123.0 (CTAF)</b>
----------------------	---	----------------------------------	-------------------------------



ELEV <b>1445</b>	TDZE <b>1445</b>
------------------	------------------



HIRL Rwy 13-31 **Ⓛ**  
 MIRL Rwy 18-36 **Ⓛ**  
 REIL Rwy 13, 18 and 36 **Ⓛ**



CATEGORY	A	B	C	D
S-13	1900-1	455 (500-1)	1900-1 3/8	455 (500-1 3/8)
<b>C</b> CIRCLING	1900-1 455 (500-1)	1980-1 535 (600-1)	2000-1 1/2 555 (600-1 1/2)	2500-3 1055 (1100-3)

# VOR RWY 13

NC-1, 10 OCT 2019 to 07 NOV 2019

NC-1, 10 OCT 2019 to 07 NOV 2019