

WAAS CH 82525 W31A	APP CRS 311°	Rwy Idg TDZE Apt Elev	5497 1444 1445
--	------------------------	-----------------------------	---

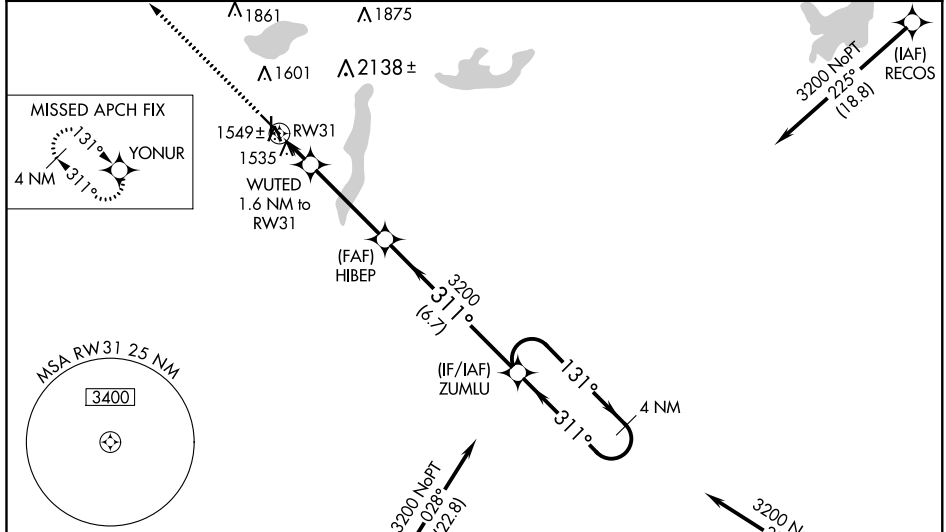
RNAV (GPS) RWY 31

PARK RAPIDS MUNI-KONSHOK FIELD (PKD)

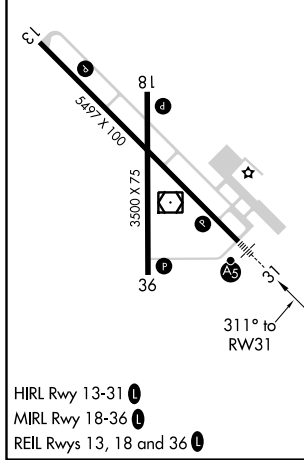
⚠ Circling to Rwy 18, 36 NA at night. For uncompensated Baro-VNAV systems, LNAV/VNAV NA below -17°C (2°F) or above 34°C (93°F). Baro-VNAV and VDP NA when using Wadena altimeter setting. Rwy 18, 36 helicopter visibility reduction below 1 SM NA.
⚠ DME/DME RNP-0.3 NA. When local altimeter setting not received, use Wadena altimeter setting and increase all DA 75 feet and all MDA 80 feet; increase LNAV/VNAV all Cats and Circling Cat C visibility ¼ mile; increase LNAV Cat C/D visibility ½ mile.
 For inop MALSRS, increase LNAV/VNAV all Cats visibility to ⅜ mile and LNAV Cat C/D visibility to 1 mile. For inop MALSRS when using Wadena altimeter setting, increase LPV all Cats visibility to ⅜ mile and LNAV/VNAV all Cats visibility to 1 ½ mile.

MALSRS
 MISSED APPROACH:
 Climb to 3300 direct YONUR and hold.

ASOS 110.6	MINNEAPOLIS CENTER 134.75 251.1	PRINCETON RADIO 122.1R	UNICOM 123.0 (CTAF) 0
----------------------	---	----------------------------------	---------------------------------



ELEV 1445	TDZE 1444
------------------	------------------



Procedure NA for arrivals at WATAM on V175 southbound.

3300 YONUR (↑) VGSI and RNAV glidepath not coincident (VGSI Angle 3.00/TCH 48).
 HIBEP 4 NM Holding Pattern
 ZUMLU 4 NM Holding Pattern
 WUTED 1.6 NM to RWY 31
 *LNAV only. 1.6 NM to RWY 31
 *1 NM to RWY 31
 RWY 31 2000*
 GP 3.00° TCH 53

CATEGORY	A	B	C	D
LPV DA	1644-½ 200 (200-½)			
LNAV/VNAV DA	1731-½ 287 (300-½)			
LNAV MDA	1800-½ 356 (400-½)	1800-⅝ 356 (400-⅝)		
C CIRCLING	1900-1 455 (500-1)	1980-1 535 (600-1)	2000-1½ 555 (600-1½)	2500-3 1055 (1100-3)

NC-1, 10 OCT 2019 to 07 NOV 2019

NC-1, 10 OCT 2019 to 07 NOV 2019