

WAAS CH <b>86925</b> <b>W13A</b>	APP CRS <b>131°</b>	Rwy Idg TDZE <b>1445</b> Apt Elev <b>1445</b>
--	------------------------	---

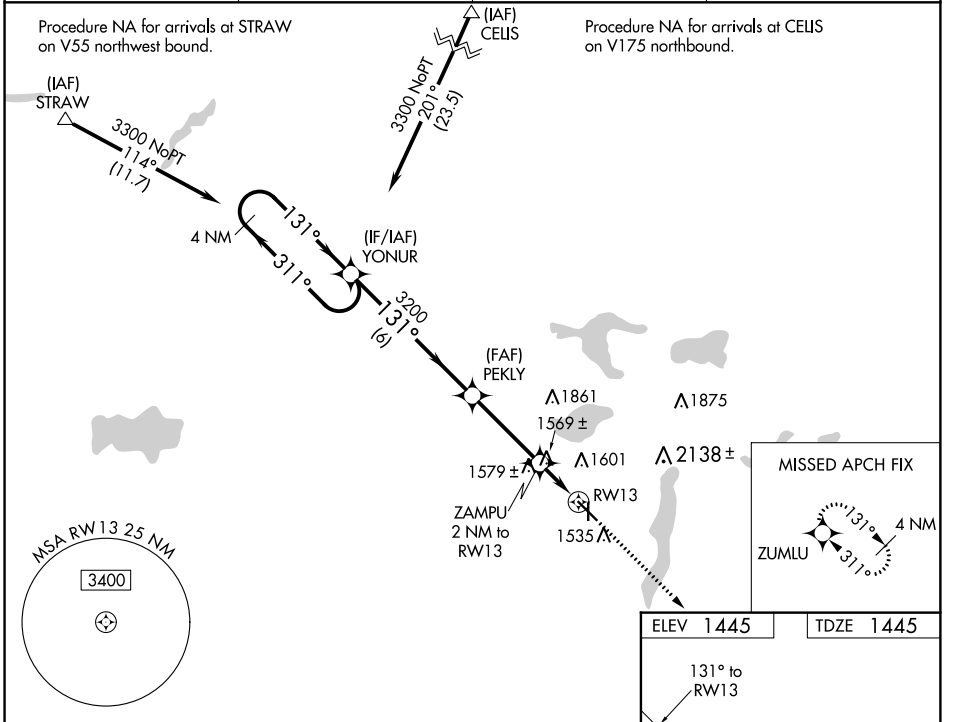
# RNAV (GPS) RWY 13

PARK RAPIDS MUNI-KONSHOK FIELD (PKD)

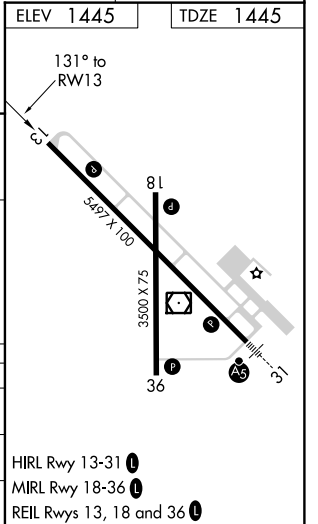
**⚠** Circling Rwy 18, 36 NA at night. DME/DME RNP-0.3 NA. Helicopter visibility reduction below  $\frac{3}{4}$  SM NA. VDP NA when using Wadena altimeter setting. When local altimeter setting not received, use Wadena altimeter setting and increase all MDA 80 feet; increase LP Cat C/D visibility  $\frac{3}{8}$  mile; increase LNAV Cat C/D and Circling Cat C visibility  $\frac{1}{4}$  mile.

**⚠** MISSED APPROACH: Climb to 3200 direct ZUMLU and hold.

ASOS <b>110.6</b>	MINNEAPOLIS CENTER <b>134.75 251.1</b>	PRINCETON RADIO <b>122.1R</b>	UNICOM <b>123.0 (CTAF) Ⓛ</b>
----------------------	---	----------------------------------	---------------------------------



	4 NM Holding Pattern YONUR		3200 ZUMLU	
	← 311°	→ 131°	131°	3.00° TCH 48
	6 NM		3.4 NM	1 NM 1 NM
CATEGORY	A	B	C	D
LP MDA	1820-1		375 (400-1)	
LNAV MDA	1840-1	395 (400-1)	1840-1 $\frac{1}{8}$	395 (400-1 $\frac{1}{8}$ )
<b>C</b> CIRCLING	1900-1 455 (500-1)	1980-1 535 (600-1)	2000-1 $\frac{1}{2}$ 555 (600-1 $\frac{1}{2}$ )	2500-3 1055 (1100-3)



NC-1, 10 OCT 2019 to 07 NOV 2019

NC-1, 10 OCT 2019 to 07 NOV 2019