

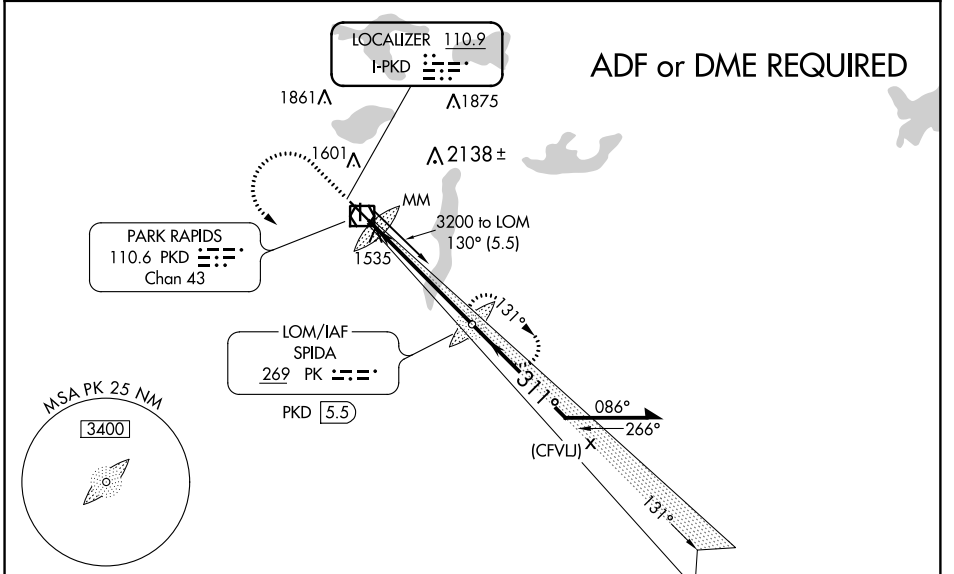
LOC I-PKD 110.9	APP CRS 311°	Rwy Idg TDZE 1444 Apt Elev 1445
---------------------------	------------------------	---

ILS or LOC RWY 31
PARK RAPIDS MUNI-KONSHOK FIELD (PKD)

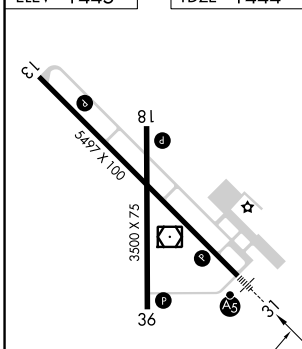
⚠ Circling Rwy 18, 36 NA at night. ADF required. VDP NA when using Wadena altimeter setting. When local altimeter setting not received, use Wadena altimeter setting and increase DA 75 feet and all MDA 80 feet; increase S-LOC 31 Cat C/D visibility 1/8 mile and increase Circling Cat C visibility 1/4 mile. For inop MALSRL, increase S-LOC 31 Cat C/D visibility to 1 1/8 mile. For inop MALSRL when using Wadena altimeter setting, increase S-ILS 31 all Cats visibility to 7/8 mile.

MALSRL MISSED APPROACH: Climb to 3200 then left turn direct SPIDA LOM and hold.

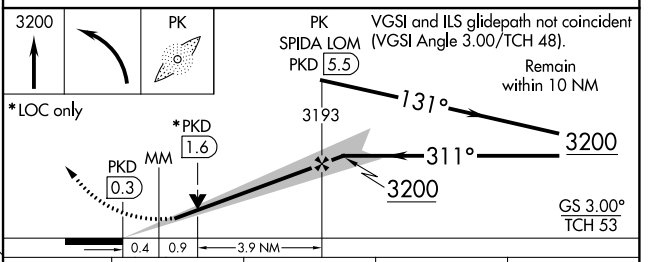
ASOS 110.6	MINNEAPOLIS CENTER 134.75 251.1	PRINCETON RADIO 122.1R	UNICOM 123.0 (CTAF)
----------------------	---	----------------------------------	-------------------------------



ELEV 1445	TDZE 1444
-----------	-----------



Knots	60	90	120	150	180
Min:Sec	5:18	3:32	2:39	2:07	1:46



CATEGORY	A	B	C	D
S-ILS 31	1644-1/2 200 (200-1/2)			
S-LOC 31	1920-1/2 476 (500-1/2)		1920-1 476 (500-1)	
C CIRCLING	1920-1 475 (500-1)	1980-1 535 (600-1)	2000-1 1/2 555 (600-1/2)	2500-3 1055 (1100-3)

NC-1, 10 OCT 2019 to 07 NOV 2019

NC-1, 10 OCT 2019 to 07 NOV 2019