

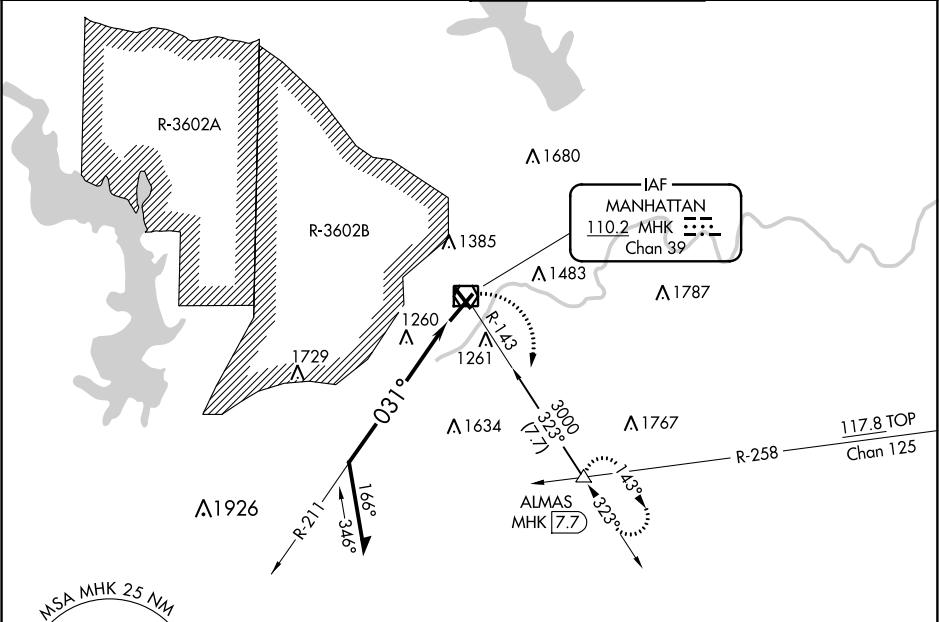
VOR/DME MHK <b>110.2</b> Chan <b>39</b>	APP CRS <b>031°</b>	Rwy Idg TDZE Apt Elev	<b>7000</b> <b>1056</b> <b>1066</b>
---	------------------------	-----------------------------	---

# VOR RWY 3

MANHATTAN RGNL (MHK)

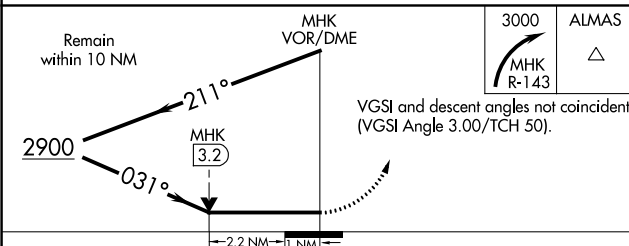
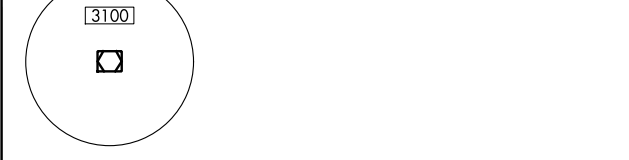
<p><b>⚠</b> Visibility reduction by helicopters NA. Circling NA west of Rwy 3-21. When local altimeter setting not received, use Marshall AAF altimeter setting and increase cll MDA 20 feet. VDP NA with Marshall AAF altimeter setting.</p>	<p>MALSR <b>AS</b></p>	<p>MISSED APPROACH: Climbing right turn to 3000 via MHK VOR/DME R-143 to ALMAS INT/MHK 7.7 DME and hold.</p>
---	----------------------------	--

ASOS <b>119.075</b>	MARSHALL GCA * <b>121.25 254.35</b>	MANHATTAN TOWER * <b>118.55 (CTAF) 0</b>	GND CON <b>121.85</b>
------------------------	--	---	--------------------------

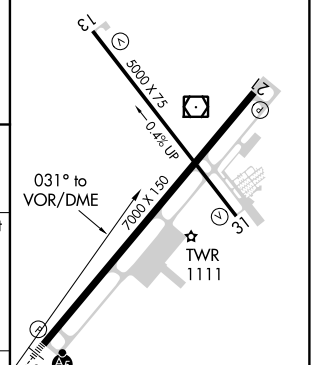


NC-2, 10 OCT 2019 to 07 NOV 2019

NC-2, 10 OCT 2019 to 07 NOV 2019



ELEV 1066	<b>D</b> TDZE 1056
-----------	--------------------



CATEGORY	A	B	C	D
S-3	1820-1 754 (800-1)	764 (800-1)	1820-1 1/4 764 (800-1 1/4)	1820-2 764 (800-2)
CIRCLING	1820-1 754 (800-1)	1820-1 1/4 754 (800-1 1/4)	1820-2 1/4 754 (800-2 1/4)	1820-2 1/2 754 (800-2 1/2)

HIRL Rwy 3-21  
MIRL Rwy 13-31  
REIL Rws 21 and 31