

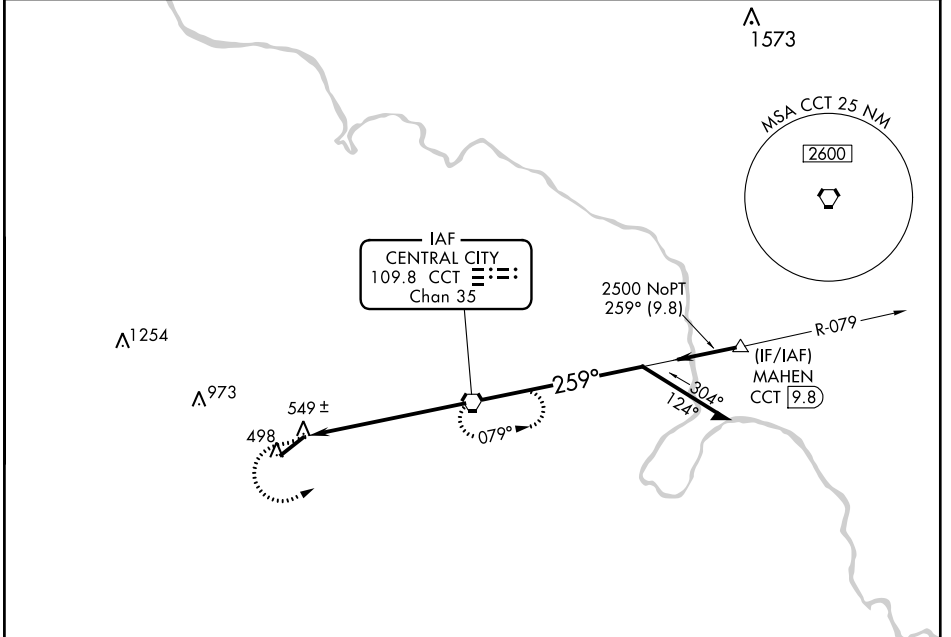
VORTAC CCT <b>109.8</b> Chan 35	APP CRS <b>259°</b>	Rwy Idg TDZE Apt Elev	<b>6051</b> <b>418</b> <b>439</b>
---------------------------------------	------------------------	-----------------------------	---

**VOR RWY 23**  
MADISONVILLE RGNL (2I0)

When local altimeter setting not received, use Evansville altimeter setting and increase all MDA 100 feet and S-23 Cats C and D visibilities 3/8 mile. For inoperative ALS, increase S-23 Cat C/D visibility 1/8 SM. Inoperative table does not apply to S-23 Cats C/D when using Evansville altimeter setting. VDP NA when using Evansville altimeter setting.

ODALS  
MISSED APPROACH: Climb to 2000 then climbing left turn 2500 direct CCT VORTAC and hold.

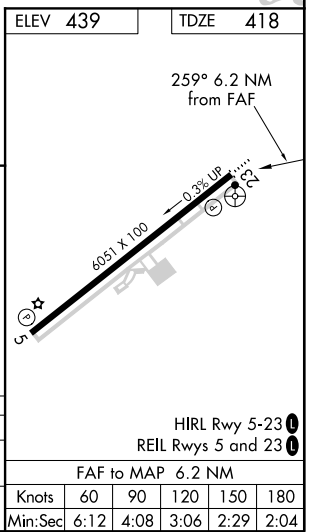
AWOS-3 <b>126.475</b>	EVANSVILLE APP CON ★ <b>124.025 290.9</b>	CLNC DEL <b>120.1</b>	UNICOM <b>122.7 (CTAF) 0</b>
--------------------------	--	--------------------------	---------------------------------



SE-1, 10 OCT 2019 to 07 NOV 2019

SE-1, 10 OCT 2019 to 07 NOV 2019

ELEV 439	TDZE 418			
2000	2500	CCT	CCT VORTAC	Remain within 10 NM
CATEGORY	A	B	C	D
S-23	820-3/4 402 (400-3/4)			
CIRCLING	860-1 421 (500-1)	900-1 461 (500-1)	920-1 1/2 481 (500-1 1/2)	1340-3 901 (1000-3)



FAF to MAP 6.2 NM					
Knots	60	90	120	150	180
Min:Sec	6:12	4:08	3:06	2:29	2:04