

# COPTER VOR RWY 17

HANCHEY AHP (STRIP) (KHEY)

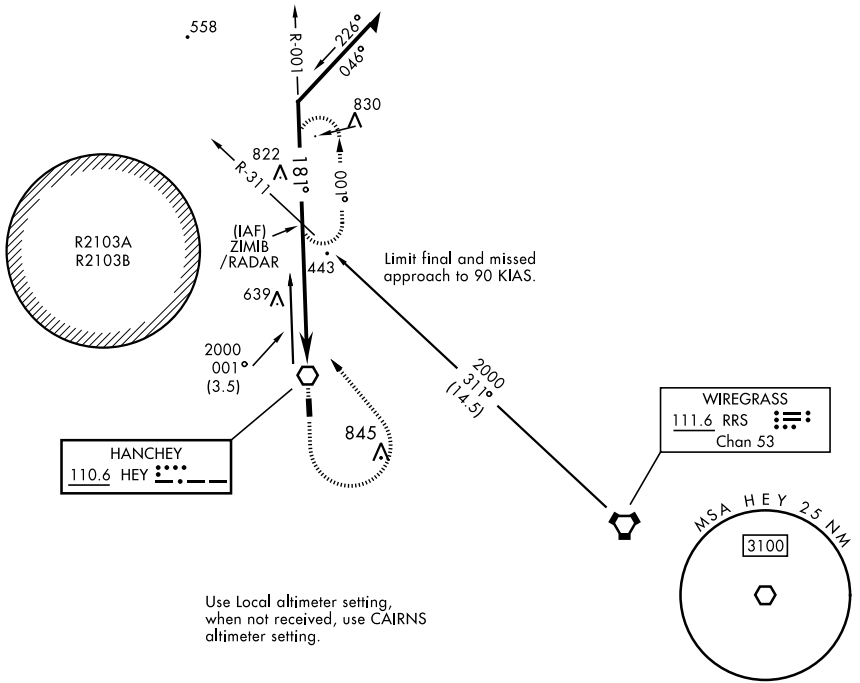
AL-5183 [USA]

VOR HEY <b>110.6</b>	APCH CRS <b>181°</b>	Rwy Idg TDZE Arprt Elev <b>476</b> <b>318</b> <b>318</b>
-------------------------	-------------------------	---

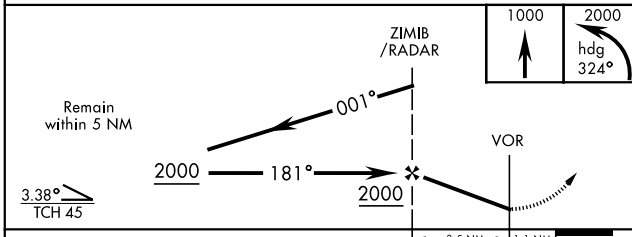
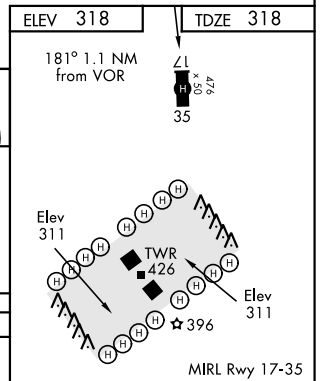
**▼** MISSED APPROACH: Climb to 1000 then climbing left turn to 2000 on heading 324° and on HEY VOR R-001 direct ZIMIB INT/RADAR and hold.

ATIS ★ <b>141.375</b>	LOWE ASOS <b>118.225</b>	CAIRNS APP CON <b>125.4 327.125</b>	HANCHEY TOWER ★ <b>140.5 387.85</b>	GND CON <b>142.55 225.575</b>	CAIRNS CLNC DEL <b>118.075 380.1</b>
--------------------------	-----------------------------	--	--	----------------------------------	---

## VFR TRAINING ONLY



Use Local altimeter setting, when not received, use CAIRNS altimeter setting.



CATEGORY	COPTER	
H-17	920- $\frac{5}{8}$	602 (700- $\frac{5}{8}$ )

# COPTER VOR RWY 17

SE-4, 10 OCT 2019 to 07 NOV 2019

SE-4, 10 OCT 2019 to 07 NOV 2019