

FORT RUCKER, ALABAMA

COPTER NDB RWY 17

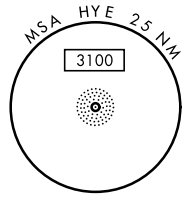
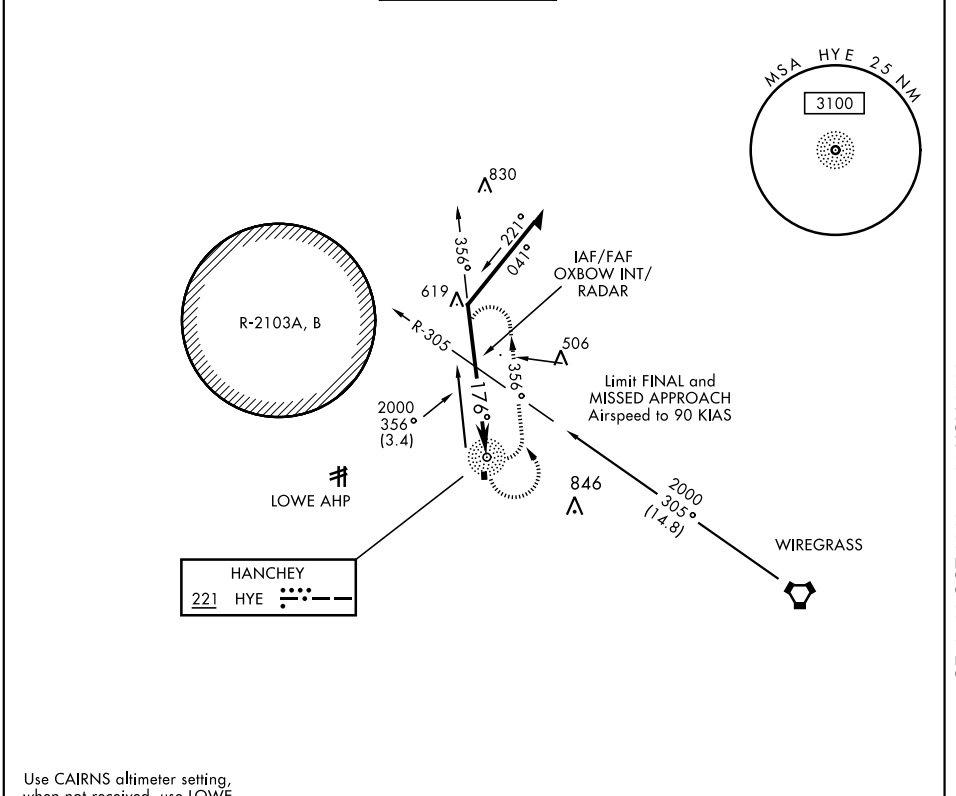
HANCHEY AHP (STRIP) (KHEY)

NDB HYE 221	APCH CRS 176°	Rwy ldg TDZE 476 318	Arprt Elev 318
-----------------------	-------------------------	--	--------------------------

AL-5183 [USA]

▼ MISSED APPROACH: Climbing left turn to 2000 in HYE NDB holding pattern.

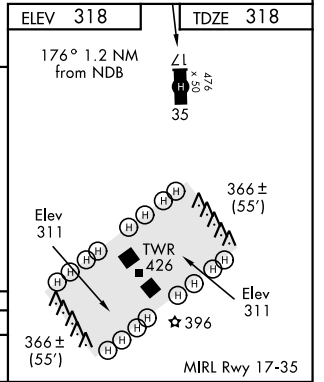
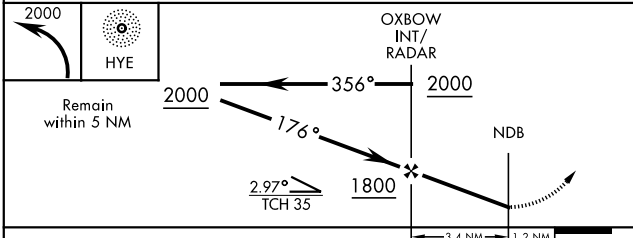
ATIS ★ 141.375	LOWE ASOS 118.225	CAIRNS APP CON 125.4 327.125	HANCHEY TOWER ★ 140.5 387.85	GND CON 142.55 225.575	CAIRNS CLNC DEL 118.075 380.1
--------------------------	-----------------------------	--	--	----------------------------------	---



SE-4, 10 OCT 2019 to 07 NOV 2019

SE-4, 10 OCT 2019 to 07 NOV 2019

Use CAIRNS altimeter setting, when not received, use LOWE altimeter setting.



CATEGORY	COPTER		
H-17	840-¾	522	(600-¾)

FORT RUCKER, ALABAMA
Orig 19JUL18

31° 21' N-85° 39' W

HANCHEY AHP (STRIP) (KHEY)

COPTER NDB RWY 17