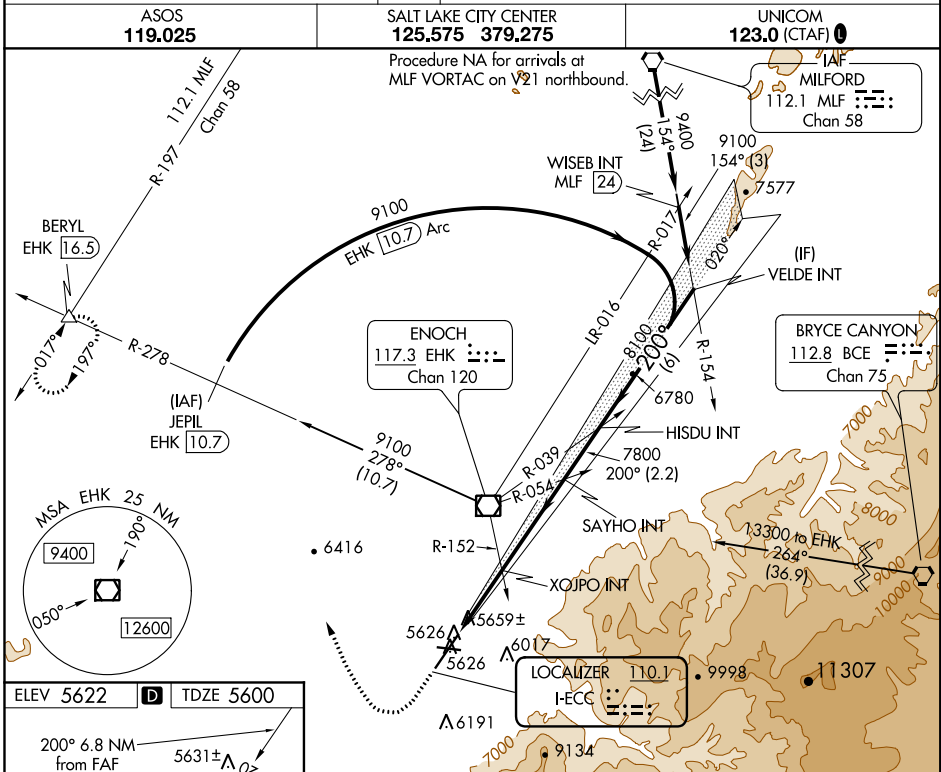


LOC I-ECC <b>110.1</b>	APP CRS <b>200°</b>	Rwy Idg TDZE Apt Elev	<b>8650</b> <b>5600</b> <b>5622</b>
---------------------------	------------------------	-----------------------------	---

# ILS or LOC RWY 20

CEDAR CITY RGNL (CDC)

Circling NA southeast of Rwy 2-20. For inop ALS, increase S-LOC 20 Cats C/D visibility to 1 SM. # For inop ALS, increase S-ILS 20 visibility all Cats to 3/8 SM.	MISSED APPROACH: Climb to 6100 then climbing right turn to 9900 on heading 322° and EHK VOR/DME R-278 to BERYL INT/EHK 16.5 DME and hold, continue climb-in-hold to 9900. † Missed approach requires minimum climb of 230 feet per NM to 7300.	
		ASOS <b>119.025</b>



SW-4, 10 OCT 2019 to 07 NOV 2019

SW-4, 10 OCT 2019 to 07 NOV 2019

ELEV 5622 TDZE 5600

MIRL Rwy 8-26

HIRL Rwy 2-20

REIL Rwy 2

FAF to MAP 6.8 NM

6100	9900	EHK R-278	BERYL	VGSI and ILS glidepath not coincident (VGSI angle 3.00/TCH 53).	VELDE INT
* LOC only. † Dual VOR receivers required.				HISDU INT SAYHO INT XOJPO INT 7800 8100 9100 GS 3.00° TCH 47	

CATEGORY	A	B	C	D
S-ILS 20 †		5820-1/2	220 (200-1/2)	
S-ILS 20 #		5868-1/2	268 (300-1/2)	
S-LOC 20	5960-1/2	360 (400-1/2)	5960-5/8	360 (400-5/8)
CIRCLING	6000-1 378 (400-1)	6100-1 478 (500-1)	6120-1 1/2 498 (500-1 1/2)	6180-2 558 (600-2)