

# RNAV (GPS) RWY 3

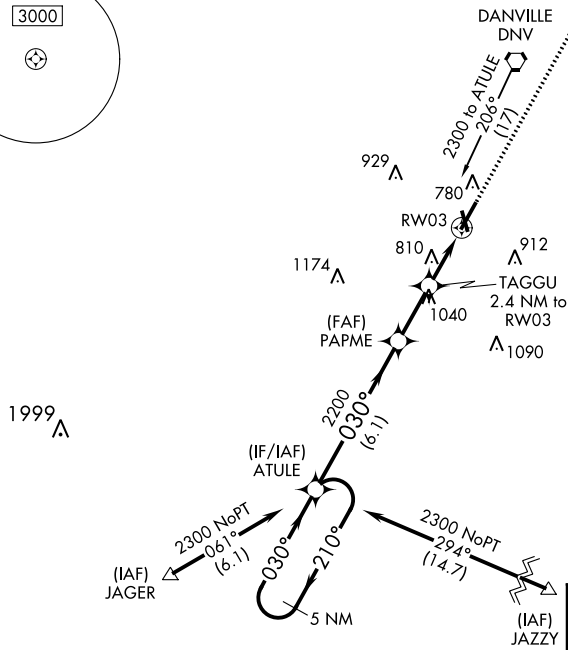
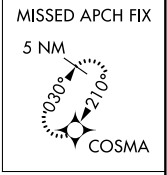
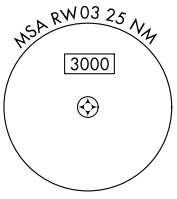
VERMILION RGNL (DNTV)

APP CRS	Rwy Idg	<b>6006</b>
<b>030°</b>	TDZE	<b>674</b>
	Apt Elev	<b>697</b>

**⚠** If local altimeter setting not received, use University of Illinois-Willard altimeter setting and increase all MDAs 100 feet. DME/DME RNP-0.3 NA. Helicopter visibility reduction below 3/4 SM NA.

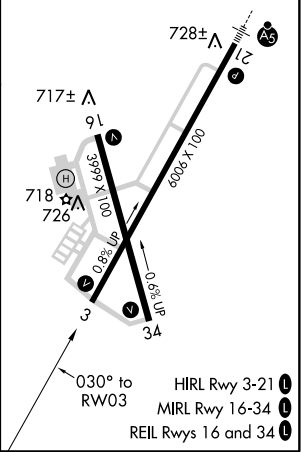
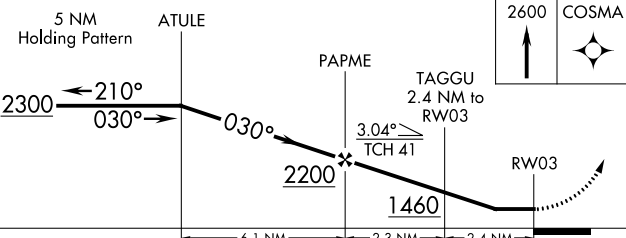
MISSED APPROACH: Climb to 2600 direct COSMA and hold.

AWOS-3 <b>119.275</b>	CHAMPAIGN APP CON ★ <b>121.35 285.65</b>	CLNC DEL <b>121.7</b>	UNICOM <b>122.7 (CTAF)</b> <b>0</b>
--------------------------	---	--------------------------	--



1999 A

ELEV 697	TDZE 674
----------	----------



CATEGORY	A	B	C	D
LNAV MDA	1120-1	446 (500-1)	1120-1½ 446 (500-1½)	1120-1½ 446 (500-1½)
CIRCLING	1160-1	463 (500-1)	1160-1½ 463 (500-1½)	1260-2 563 (600-2)

EC-3, 10 OCT 2019 to 07 NOV 2019

EC-3, 10 OCT 2019 to 07 NOV 2019