


WAAS CH <b>58004</b> <b>W21A</b>	APP CRS <b>210°</b>	Rwy Idg TDZE Apt Elev	<b>6006</b> <b>697</b> <b>697</b>
--	------------------------	-----------------------------	---


# RNAV (GPS) RWY 21

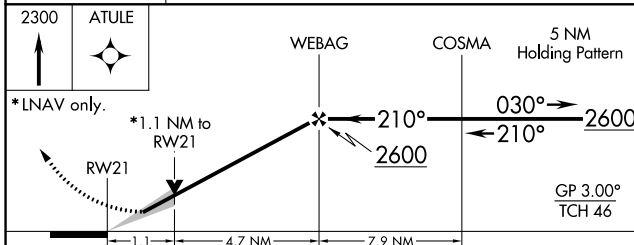
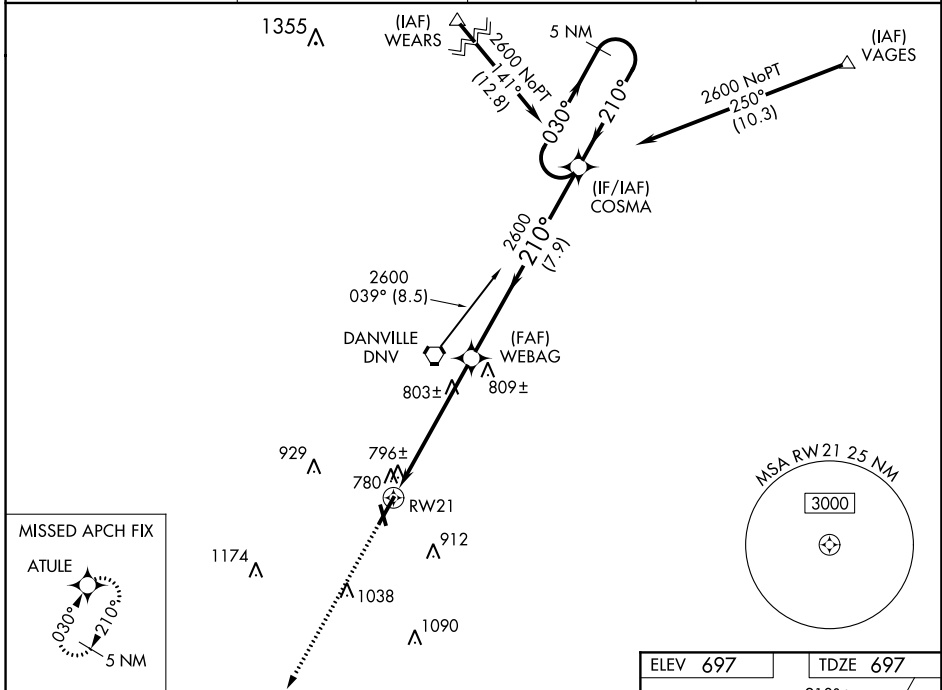
VERMILION RGNL (D.V)

**⚠** If local altimeter setting not received, use University of Illinois-Willard altimeter setting and increase all DAs/MDAs 100 feet. Baro-VNAV and VDP NA when using University of Illinois-Willard altimeter setting. For uncompensated Baro-VNAV systems, LNAV/VNAV NA below -16°C (4°F) or above 47°C (116°F). For inop MALS/R, increase LPV all Cats visibility to 1 mile and LNAV Cat D visibility to 1½ mile. DME/DME RNP-0.3 NA.

**MALS/R** 

**MISSED APPROACH:** Climb to 2300 direct ATULE and hold.

AWOS-3 <b>119.275</b>	CHAMPAIGN APP CON ★ <b>121.35 285.65</b>	CLNC DEL <b>121.7</b>	UNICOM <b>122.7 (CTAF)</b> 
--------------------------	---	--------------------------	---



ELEV 697	TDZE 697
----------	----------

This diagram provides a detailed view of the final approach and runway:
 

- Runway:** RWY 21, 3006 x 1100 ft.
- Obstacles:** 717±, 718, 726, 728±, 91, 34.
- Navigation:** 210° to RW21, 0.08° UP, 0.08° UP.
- Other:** HIRL Rwy 3-21, MRL Rwy 16-34, REL Rwy 16 and 34.

CATEGORY	A	B	C	D
LPV DA		990-½	293 (300-½)	
LNAV/VNAV DA		1069-¾	372 (400-¾)	
LNAV MDA	1080-½	383 (400-½)		1080-1 383 (400-1)
CIRCLING	1160-1	463 (500-1)	1160-1½ 463 (500-1½)	1260-2 563 (600-2)

EC-3, 10 OCT 2019 to 07 NOV 2019

EC-3, 10 OCT 2019 to 07 NOV 2019