

WAAS CH 69417 W31A	APP CRS 308°	Rwy ldg TDZE Apt Elev	6600 204 208
--	------------------------	-----------------------------	---

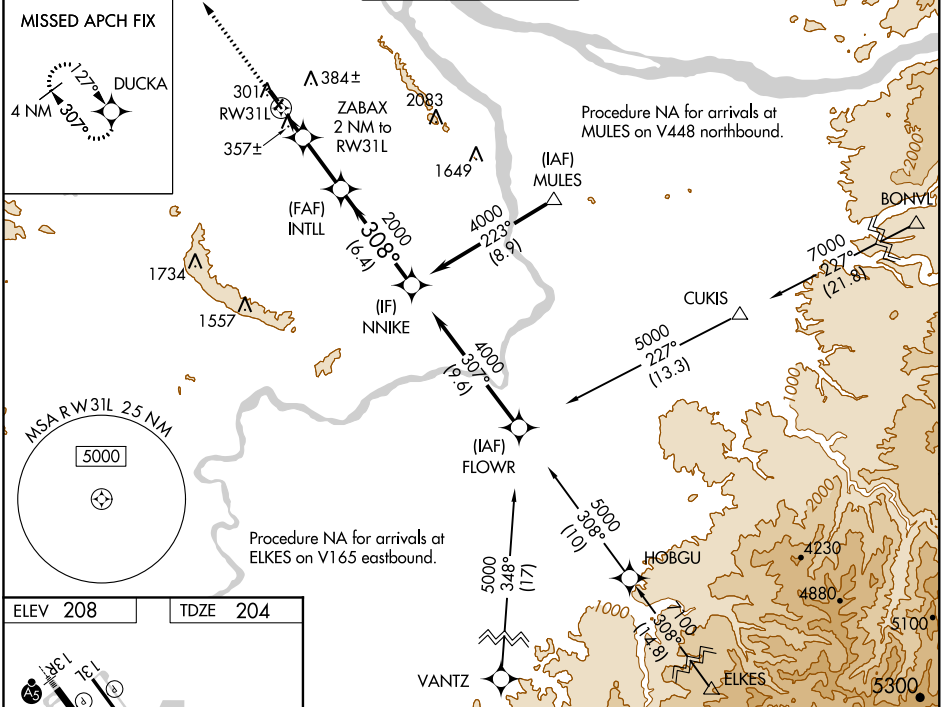
RNAV (GPS) RWY 31L

PORTLAND-HILLSBORO (HIO)

⚠ For uncompensated Baro-VNAV systems, LNAV/VNAV NA below -20°C (-4°F) or above 54°C (130°F). DME/DME RNP-0.3 NA. When local altimeter setting not received, use Portland Intl altimeter setting and increase all DA/MDA 60 feet and increase LPV, LNAV/VNAV and Circling Cat D visibility ¼ mile. VDP and Baro-VNAV NA when using Portland Intl altimeter setting. Helicopter visibility reduction below ¾ SM NA.

MISSED APPROACH: Climb to 3700 direct DUCKA and hold.

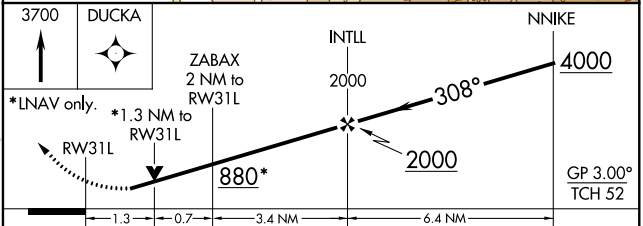
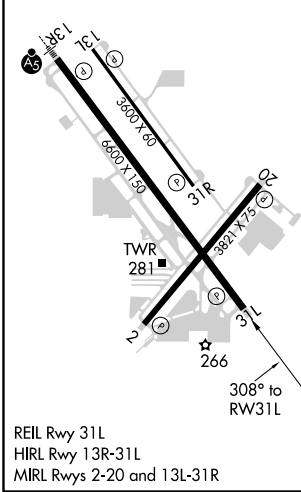
ATIS 127.65	PORTLAND APP CON 126.0 269.175	HILLSBORO TOWER * 119.3 (CTAF) 239.3	GND CON 121.7	UNICOM 122.95
-----------------------	--	--	-------------------------	-------------------------



NW-1, 10 OCT 2019 to 07 NOV 2019

NW-1, 10 OCT 2019 to 07 NOV 2019

ELEV 208	TDZE 204
----------	----------



CATEGORY	A	B	C	D
LPV DA		583-1¼	379 (400-1¼)	
LNAV/VNAV DA		644-1½	440 (500-1½)	
LNAV MDA	660-1	456 (500-1)	660-1¾	456 (500-1¾)
C CIRCLING	680-1 472 (500-1)	720-1 512 (600-1)	720-1½ 512 (600-1½)	980-2½ 772 (800-2½)