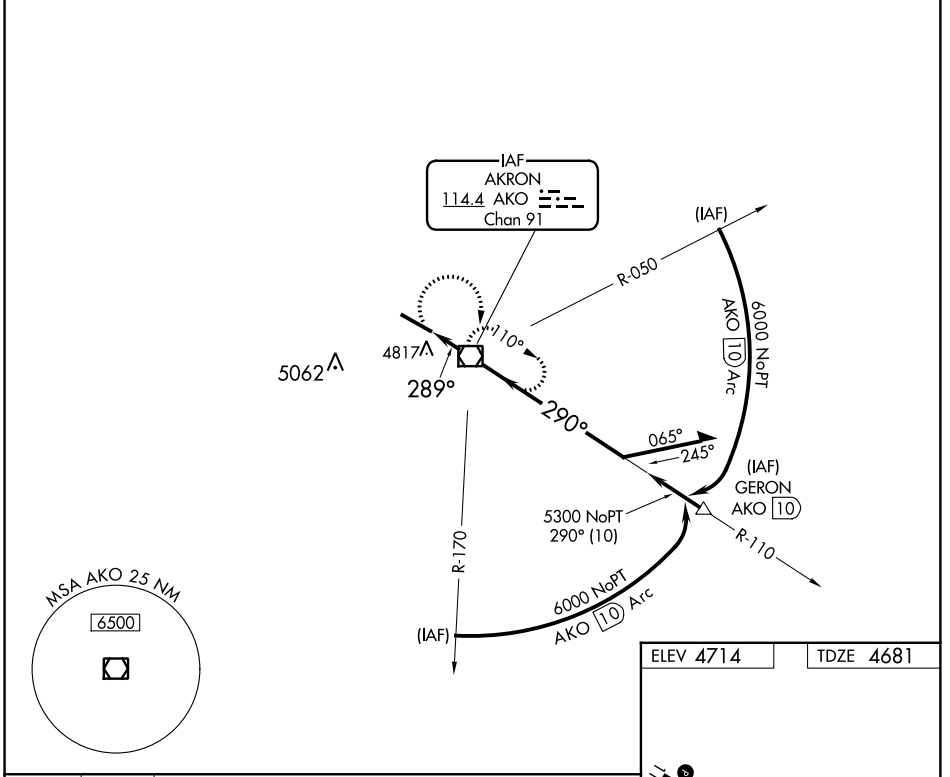


VOR/DME AKO <b>114.4</b> Chan 91	APP CRS <b>289°</b>	Rwy Idg TDZE Apt Elev	<b>7001</b> <b>4681</b> <b>4714</b>
--	------------------------	-----------------------------	---

**VOR RWY 29**  
COLORADO PLAINS RGNL (AKO)

**▽** MISSED APPROACH: Climbing right turn to 6100 direct AKO VOR/DME and hold.

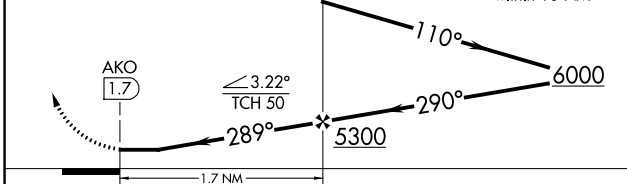
ASOS <b>135.475</b>	DENVER CENTER <b>133.95 317.55</b>	UNICOM <b>122.8 (CTAF) ①</b>
------------------------	---------------------------------------	---------------------------------



SW-1, 10 OCT 2019 to 07 NOV 2019

SW-1, 10 OCT 2019 to 07 NOV 2019

6100 AKO VGSi and descent angles not coincident (VGSi Angle 3.00/TCH 43).  
 Remain within 10 NM



ELEV 4714	TDZE 4681
-----------	-----------

Diagram showing the runway layout and altitudes:  
 - MIRA Rwy 11-29 (①)  
 - REIL Rwy 11 and 29  
 - FAF to MAP 1.7 NM  
 - Altitudes: 4796 A, 4799 ±  
 - Slope: 7001 x 100, -0.6% UP  
 - Distance: 289° 1.7 NM from FAF

Knots	60	90	120	150	180
Min:Sec	1:42	1:08	0:51	0:41	0:34

CATEGORY	A	B	C	D
S-29	5120-1	439 (500-1)	5120-1¼ 439 (500-1¼)	5120-1½ 439 (500-1½)
CIRCLING	5160-1 446 (500-1)	5180-1 466 (500-1)	5300-1½ 586 (600-1½)	5300-2 586 (600-2)