

WAAS CH 77704 W23A	APP CRS 230°	Rwy ldg 11500 TDZE 87 Apt Elev 93
--	------------------------	--

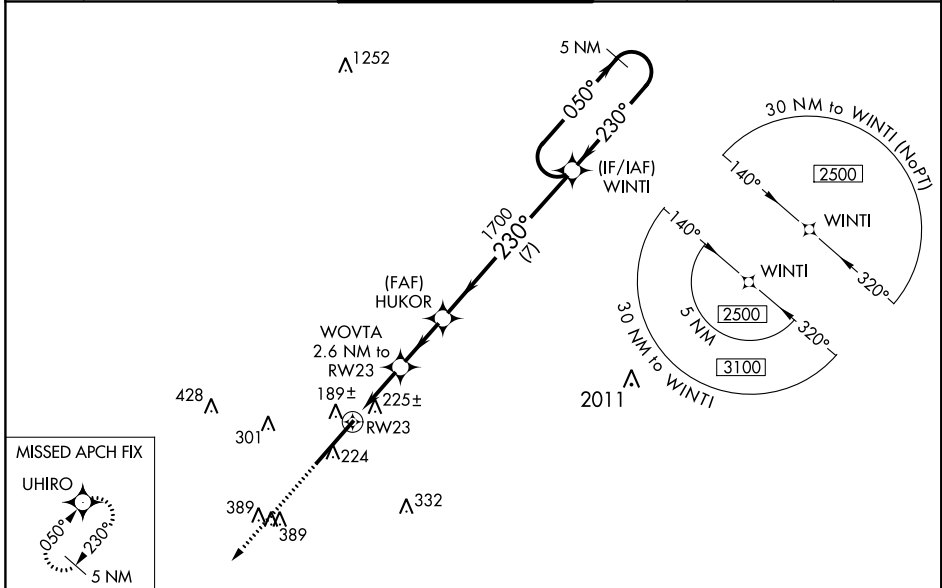
RNAV (GPS) RWY 23

KINSTON RGNL JETPORT AT STALLINGS FIELD (ISO)

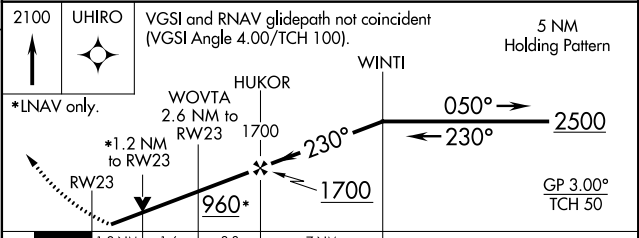
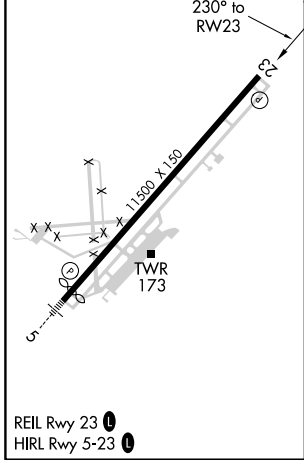
⚠ Baro-VNAV NA when using Seymour Johnson AFB altimeter setting. For uncompensated Baro-VNAV systems, LNAV/VNAV NA below -15°C (5°F) or above 54°C (130°F). DME/DME RNP-0.3 NA.
⚠ VDP NA with Seymour Johnson AFB altimeter setting. Rwy 23 helicopter visibility reduction below ¼ SM NA. When local altimeter setting not received, use Seymour Johnson AFB altimeter setting and increase LPV DA to 432, LNAV/VNAV DA to 413, and all MDA 60 feet. Increase LPV all Cats and LNAV Cats C and D visibility ½ mile, and increase LNAV/VNAV all Cats and Circling Cat D visibility ¼ mile.

MISSED APPROACH:
Climb to 2100 direct UHIRO and hold.

AWOS-3	SEYMOUR JOHNSON APP CON *	KINSTON TOWER *	GND CON	RALEIGH RADIO	UNICOM
132.75	127.3 273.6	120.6 (CTAF) 0 335.55	121.9	122.15R	122.95



ELEV 93	TDZE 87
----------------	----------------



CATEGORY	A	B	C	D
LPV DA	390-1 303 (300-1)			
LNAV/VNAV DA	437-1½ 350 (400-1½)			
LNAV MDA	540-1 453 (500-1)	540-1¾ 453 (500-1¾)		
C CIRCLING	580-1 487 (500-1)	700-1¾ 607 (700-1¾)	740-2 647 (700-2)	

RNAV (GPS) RWY 23

SE-2, 10 OCT 2019 to 07 NOV 2019

SE-2, 10 OCT 2019 to 07 NOV 2019