


# ILS or LOC RWY 5

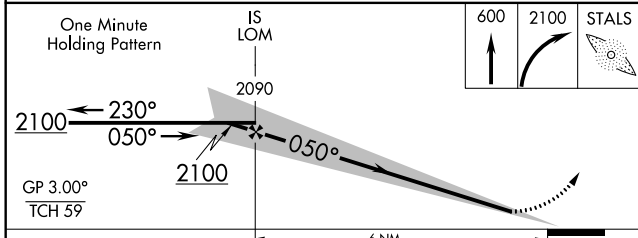
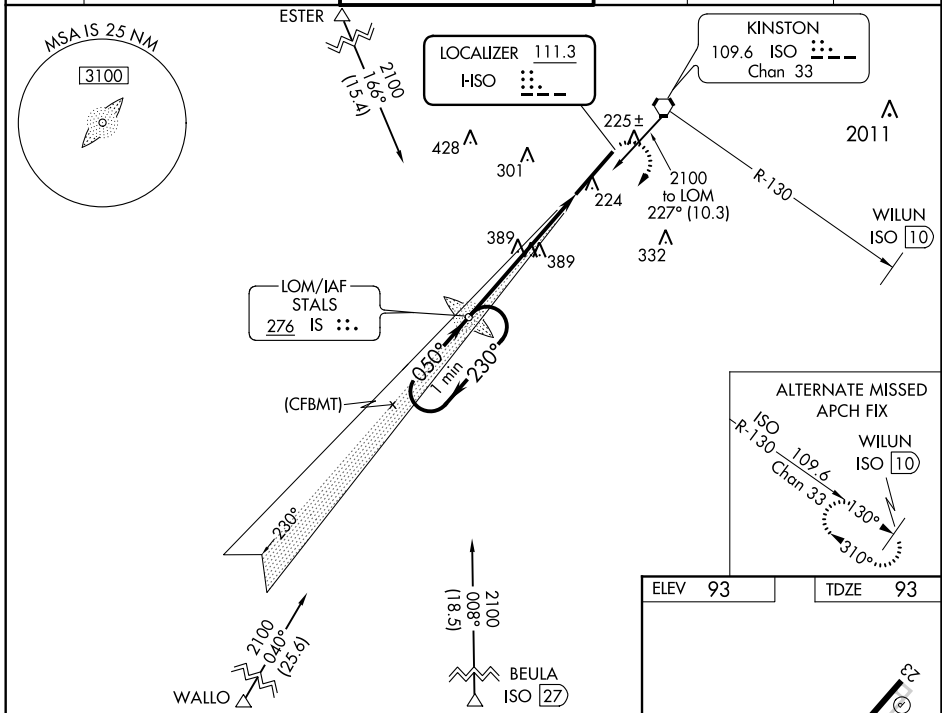
KINSTON RGNL JETPORT AT STALLINGS FIELD (ISO)

LOC I-ISO <b>111.3</b>	APP CRS <b>050°</b>	Rwy Idg <b>10960</b>
		TDZE <b>93</b>
		Apt Elev <b>93</b>

**ADF Required.** When local altimeter setting not received, use Seymour Johnson AFB altimeter setting and increase DA to 336; increase all MDA 60 feet and S-LOC 5 Cats C and D visibility 1/8 mile and Circling Cat D visibility 1/4 mile. For inop MALSRL, increase S-LOC 5 Cats C and D visibility to 1 1/8 mile. For inop MALSRL when using Seymour Johnson AFB altimeter setting, increase S-LOC 5 Cats C and D visibility to 1 3/4 mile.  
**\*\* RVR 1800 authorized with use of FD or AP or HUD to DA, NA when using Seymour Johnson AFB altimeter setting.**

**MALSRL**  
 MISSED APPROACH:  
 Climb to 600 then climbing right turn to 2100 direct STALS LOM and hold.

AWOS-3 <b>132.75</b>	SEYMOUR JOHNSON APP CON * <b>127.3 273.6</b>	KINSTON TOWER * <b>120.6 (CTAF) 335.55</b>	GND CON <b>121.9</b>	RALEIGH RADIO <b>122.15R</b>	UNICOM <b>122.95</b>
-------------------------	---	---	-------------------------	---------------------------------	-------------------------



ELEV 93	TDZE 93
---------	---------

REIL Rwy 23  
 HIRL Rwy 5-23

FAF to MAP 6 NM					
Knots	60	90	120	150	180
Min:Sec	6:00	4:00	3:00	2:24	2:00

SE-2. 10 OCT 2019 to 07 NOV 2019

SE-2. 10 OCT 2019 to 07 NOV 2019

# ILS or LOC RWY 5