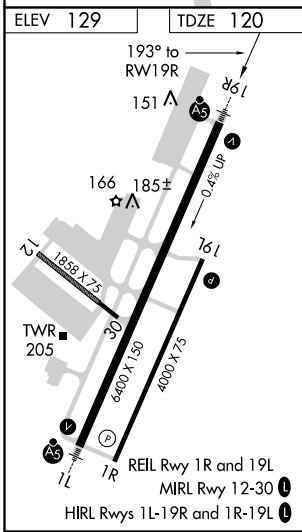
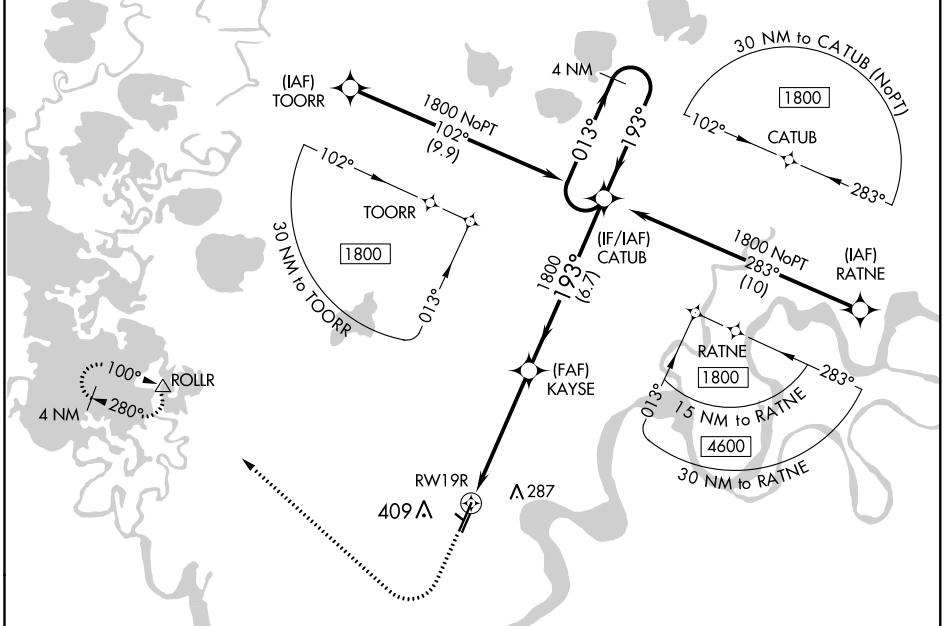


WAAS CH 70507 W19A	APP CRS 193°	Rwy Idg TDZE Apt Elev	6400 120 129
---------------------------------	------------------------	-----------------------------	---

RNAV (GPS) RWY 19R

BETHEL (BET)(PABE)

<p>▼ For uncompensated Baro-VNAV systems, LNAV/VNAV NA below -25°C (-13°F) or above 54°C (130°F). Circling NA west of Rwy 1L-19R. DME/DME RNP-0.3 NA.</p>	MALSR	MISSED APPROACH: Climb to 1700 then climbing right turn to 2000 direct ROLLR and hold.
	<p>ATIS 119.8</p>	<p>ANCHORAGE CENTER 125.2 372.0</p>
<p>GND CON 121.7</p>		



ELEV 129	TDZE 120	1700	2000	ROLLR
<p>* LNAV only</p> <p>* 1.3 NM to RWY 19R</p>				
<p>KAYSE 1800</p> <p>CATUB 1800</p> <p>4 NM Holding Pattern</p> <p>GP 3.00° TCH 52</p>				
CATEGORY	A	B	C	D
LPV DA	DA	320/24	200 (200-½)	
LNAV/VNAV DA	DA	479/40	359 (400-¾)	
LNAV MDA	560/24	440 (500-½)	560/45	440 (500-¾)
CIRCLING	560-1 431 (500-1)	600-1 471 (500-1)	600-1½ 471 (500-1½)	680-2 551 (600-2)

AK, 10 OCT 2019 to 05 DEC 2019

AK, 10 OCT 2019 to 05 DEC 2019