

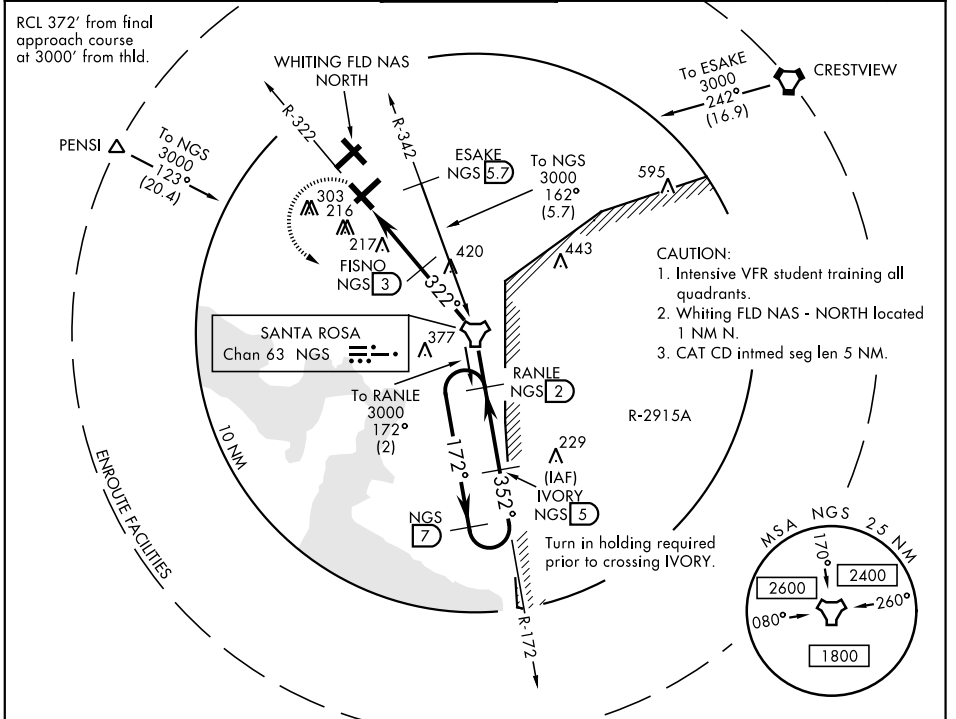
TACAN RWY 32

TACAN NGS Chan 63	APCH CRS 322°	Rwy ldg TDZE 172 Arprt Elev 178	AL-1909 [USN]	WHITING FLD NAS - SOUTH (KNDZ)
-----------------------------	-------------------------	---	---------------	--------------------------------

▼ * When ALS inop, increase CAT ABCD vis to 1 mile.
 ** Circling not authorized NE of Rwy 14-32 and NW of Rwy 5-23.

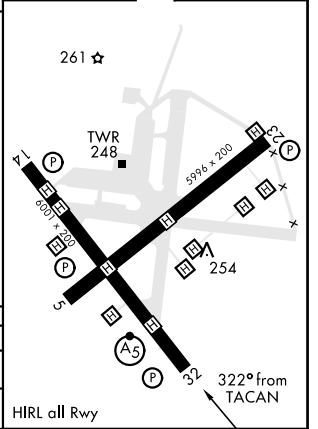
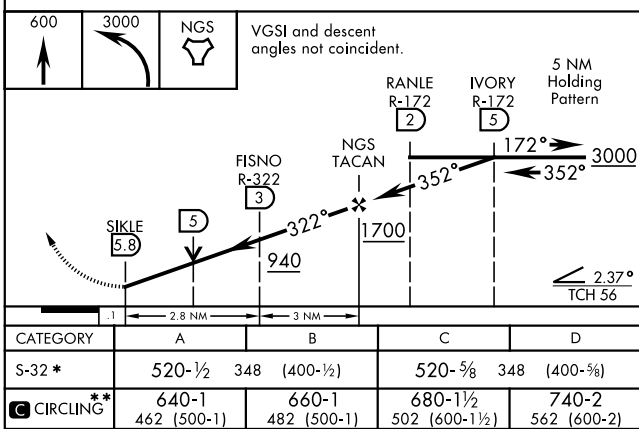
MALS R (A5) MISSED APPROACH: Climb to 600. Then climbing left turn to 3000 direct NGS TACAN. Then via R-172 to RANLE and hold. Contact Pensacola Approach Control.

ATIS ★ 273.575	PENSACOLA APP CON 124.85 385.4	SOUTH WHITING TOWER ★ 121.4 348.675	GND CON 317.65	CLNC DEL 355.6	ASR/PAR
--------------------------	--	---	--------------------------	--------------------------	---------



EMERG SAFE ALT 100 NM 3500

ELEV 178 TDZE 172



MILTON, FLORIDA 30° 42'N-87° 01'W WHITING FLD NAS - SOUTH (KNDZ)

TACAN RWY 32

SE-3, 10 OCT 2019 to 07 NOV 2019

SE-3, 10 OCT 2019 to 07 NOV 2019